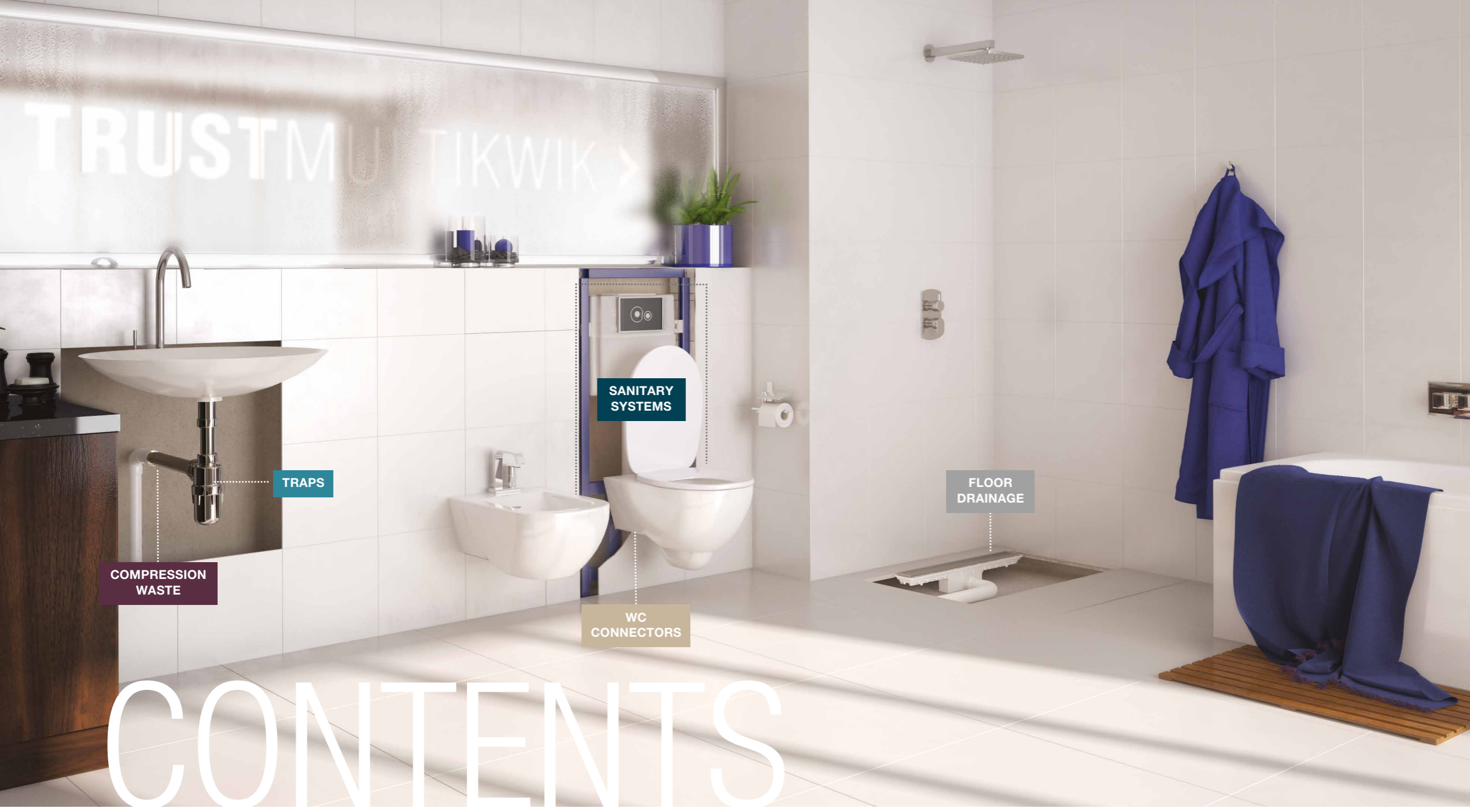


# SPECIFICATION GUIDE

**TRUST MULTIKWIK**





# CONTENTS

## PAGE 6

### SANITARY SYSTEMS

|                               |    |
|-------------------------------|----|
| WC frames . . . . .           | 13 |
| Concealed cisterns . . . . .  | 17 |
| Flush valves . . . . .        | 18 |
| Flush plates . . . . .        | 20 |
| Toilet seats . . . . .        | 24 |
| Float manifolds . . . . .     | 26 |
| Spares & components . . . . . | 27 |

## PAGE 32

### TRAPS

|                                   |    |
|-----------------------------------|----|
| Bottle traps . . . . .            | 34 |
| Tubular / running traps . . . . . | 38 |
| Shower waste traps . . . . .      | 40 |
| Bath waste traps . . . . .        | 42 |
| Trap Accessories . . . . .        | 44 |
| Utility waste . . . . .           | 46 |
| Bowl kits . . . . .               | 48 |
| Waste accessories . . . . .       | 50 |

## PAGE 54

### COMPRESSION WASTE

|                                    |    |
|------------------------------------|----|
| Problem solvers . . . . .          | 55 |
| Compression waste . . . . .        | 56 |
| Compression waste chrome . . . . . | 58 |

## PAGE 62

### WC CONNECTORS

|                                    |    |
|------------------------------------|----|
| Problem solvers . . . . .          | 64 |
| For modern pans . . . . .          | 66 |
| For old style pans . . . . .       | 78 |
| For stainless steel pans . . . . . | 80 |
| Ancillaries . . . . .              | 82 |

## PAGE 84

### FLOOR DRAINAGE

|                                      |    |
|--------------------------------------|----|
| Problem solvers . . . . .            | 87 |
| Linum range . . . . .                | 88 |
| Trapped shower gully range . . . . . | 92 |
| Continuous channel . . . . .         | 96 |

## PAGE 99

### CUSTOMER INFORMATION



Since its inception Multikwik has revolutionised plumbing in the UK, as it was one of the first companies to support the use of plastics in plumbing. The innovative flexible EVA WC connectors were first introduced to the UK by Multikwik and provided plumbers with a product that is easy to install and creates a solution to a long standing plumbing problem.

From this innovation, the Multikwik ethos has grown – in every product we manufacture we aim to meet Multikwik’s benchmark standards of:

- Reliability
- Simplicity
- Speed of installation
- Problem solving features

Four very simple reasons why you can **TRUST MULTIKWIK**





# SANITARY SYSTEMS

## STRENGTH YOU CAN **TRUST**

The Multikwik sanitary system includes sanitary frames, concealed cisterns, flush valves and a selection of flush plates – all the hidden things that offer reliability when designing modern washrooms.

Wall hung toilets, urinals and basins have many benefits over the traditional close coupled WCs and pedestal basins, including easier cleaning and maintenance, hiding unsightly pipework and providing a contemporary, sleek bathroom finish.

**For versatility and reliability in modern bathroom design, trust the wide Multikwik sanitary systems range.**

### Multikwik sanitary frames

Multikwik sanitary frames are the backbone of professional plumbing, supporting the wall hung chinaware, concealing unsightly pipework and allowing for easier cleaning and maintenance. The range includes 820, 985 and 1185mm frames for various bathroom applications, WCs and fittings for special needs. This enables bathroom designs for any customer requirement.

#### Strength

Multikwik sanitary frames will support loads in excess of 400kg (63st) and are designed for a 25 year lifespan.

#### Water conservation

The dual flush capability offers a choice of 6 or 3 litre flushes.

#### Aesthetics

The very nature of the concealed frames allows for clean design lines by concealing unsightly pipework, taking up no more space than a traditional installation.

#### Easy to clean

With the sanitary ware suspended from the frame, cleaning is far easier, faster and more effective, a key requirement for Facility Managers.

#### Easy to maintain

Any necessary maintenance can be achieved through the flush actuation plate access, avoiding the need for expensive, obtrusive access panels.

#### Product range

With a choice of 820, 985 & 1185mm height options for different applications, the frames can be used under a window, under a vanity shelf or at full height. Also available are frames adapted for special needs requirements. In addition Multikwik offers a compact float system, ideal for multiple pans in commercial applications.

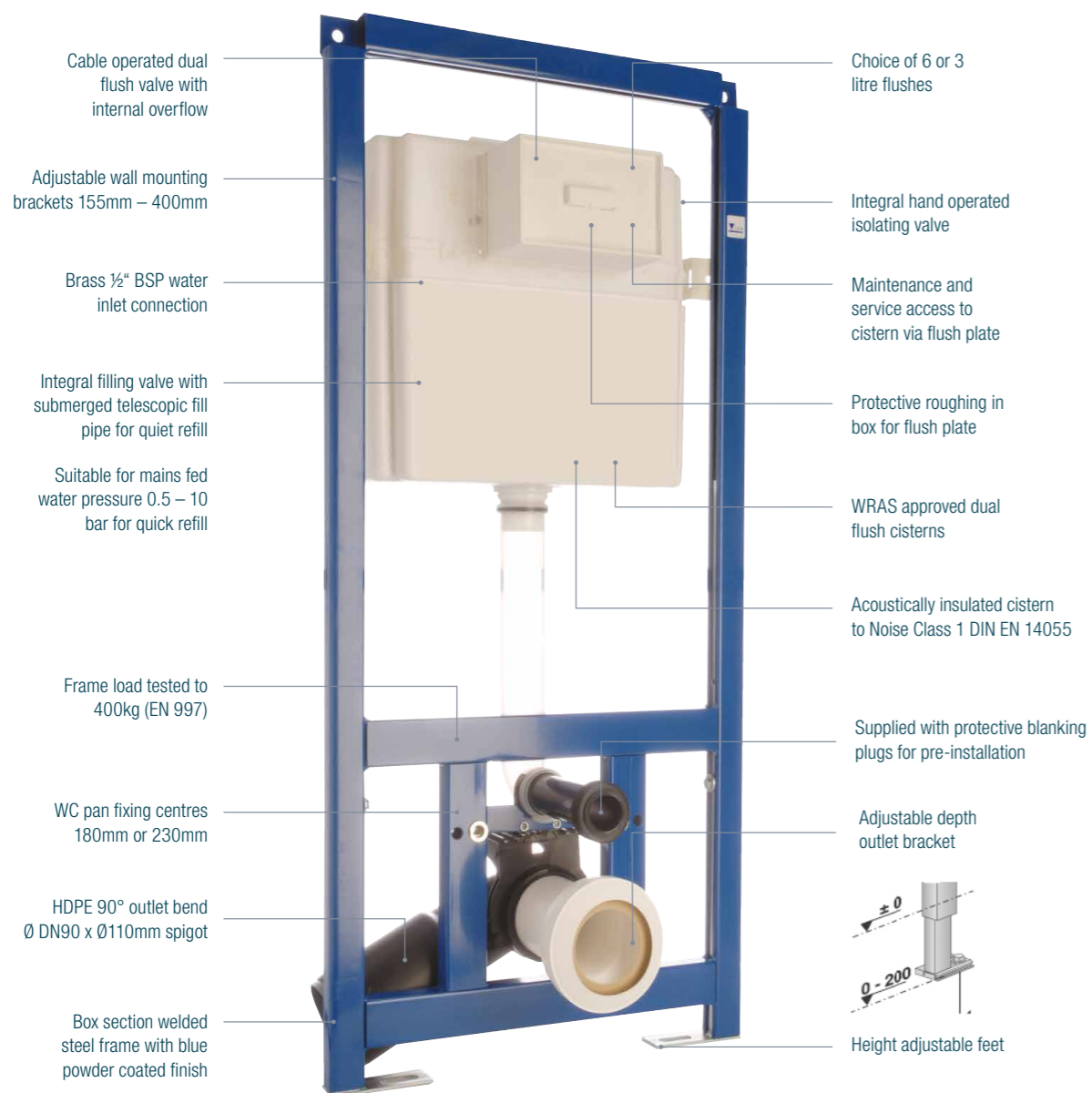
#### Versatile

The full range of interchangeable Multikwik flush actuation plates can be used with any frame and are available as surface or recess mounted.

## Multikwik sanitary frames

A Multikwik frame consists of many quality components to ensure reliability and long life expectancy, as detailed below:

- Universally applicable individual frames for drywall construction
- Fast and simple installation by just one person
- Can be combined with nearly any lightweight construction system or studs.



Installation frame supplied pre-assembled in protective cardboard box with integral carry handles

Multikwik pan connector and flush pipe included



Frame supplied with fixing set for wall hung WC pan including studs, washers, nuts and chrome cover caps



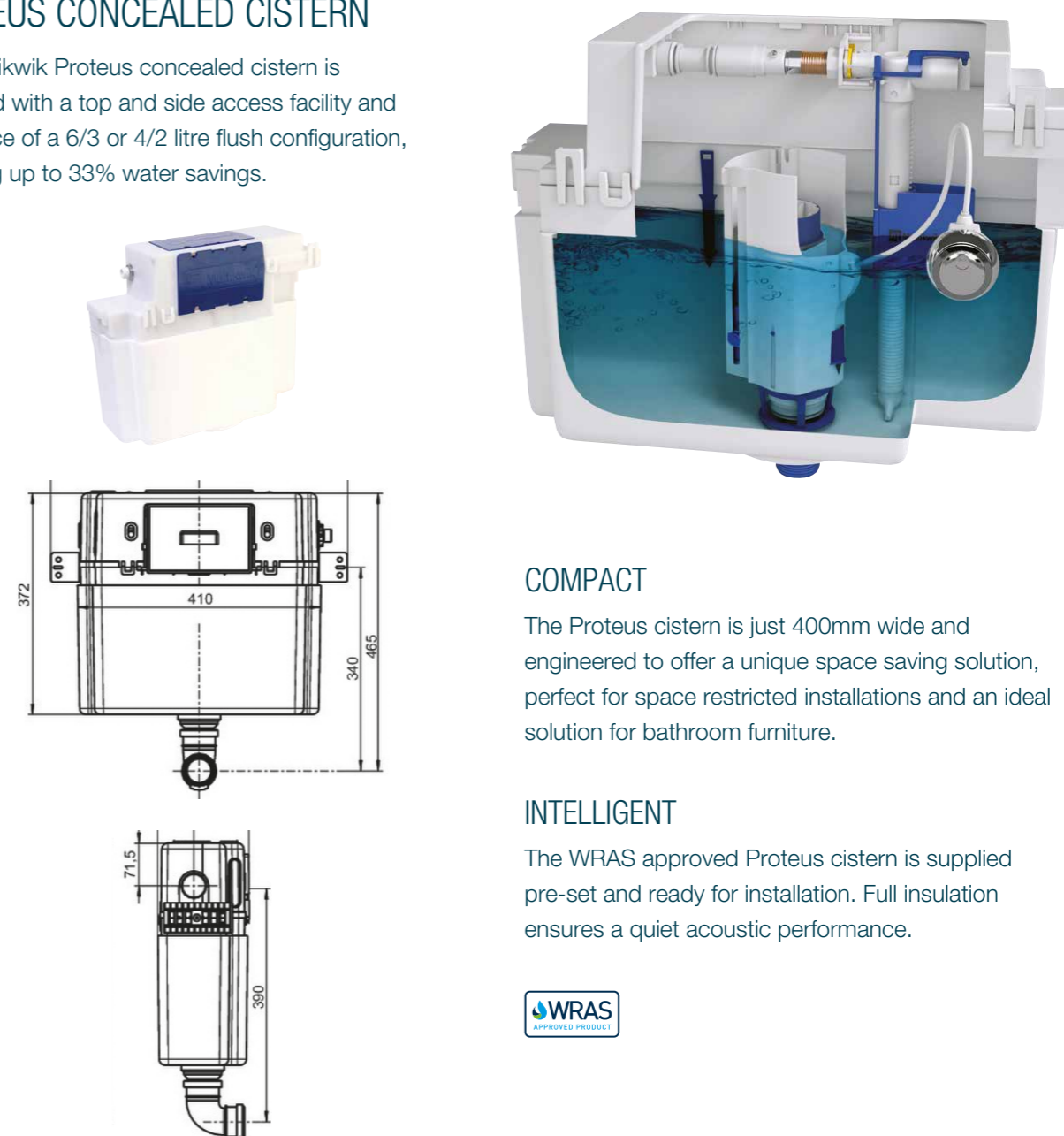
## Multikwik concealed cisterns

Multikwik has a range of concealed cisterns, including the Proteus which is one of the smallest cisterns on the market.

All cisterns are supplied complete with high quality mechanisms for long life and easy installation.

### PROTEUS CONCEALED CISTERN

The Multikwik Proteus concealed cistern is equipped with a top and side access facility and the choice of a 6/3 or 4/2 litre flush configuration, providing up to 33% water savings.



#### COMPACT

The Proteus cistern is just 400mm wide and engineered to offer a unique space saving solution, perfect for space restricted installations and an ideal solution for bathroom furniture.

#### INTELLIGENT

The WRAS approved Proteus cistern is supplied pre-set and ready for installation. Full insulation ensures a quiet acoustic performance.



TRC1830 cistern supplied with cable operated dual flush button MFVB6B in chrome/satin chrome finish



TRC1831 cistern supplied with pneumatic operated dual flush button MFVP02 in polished chrome finish



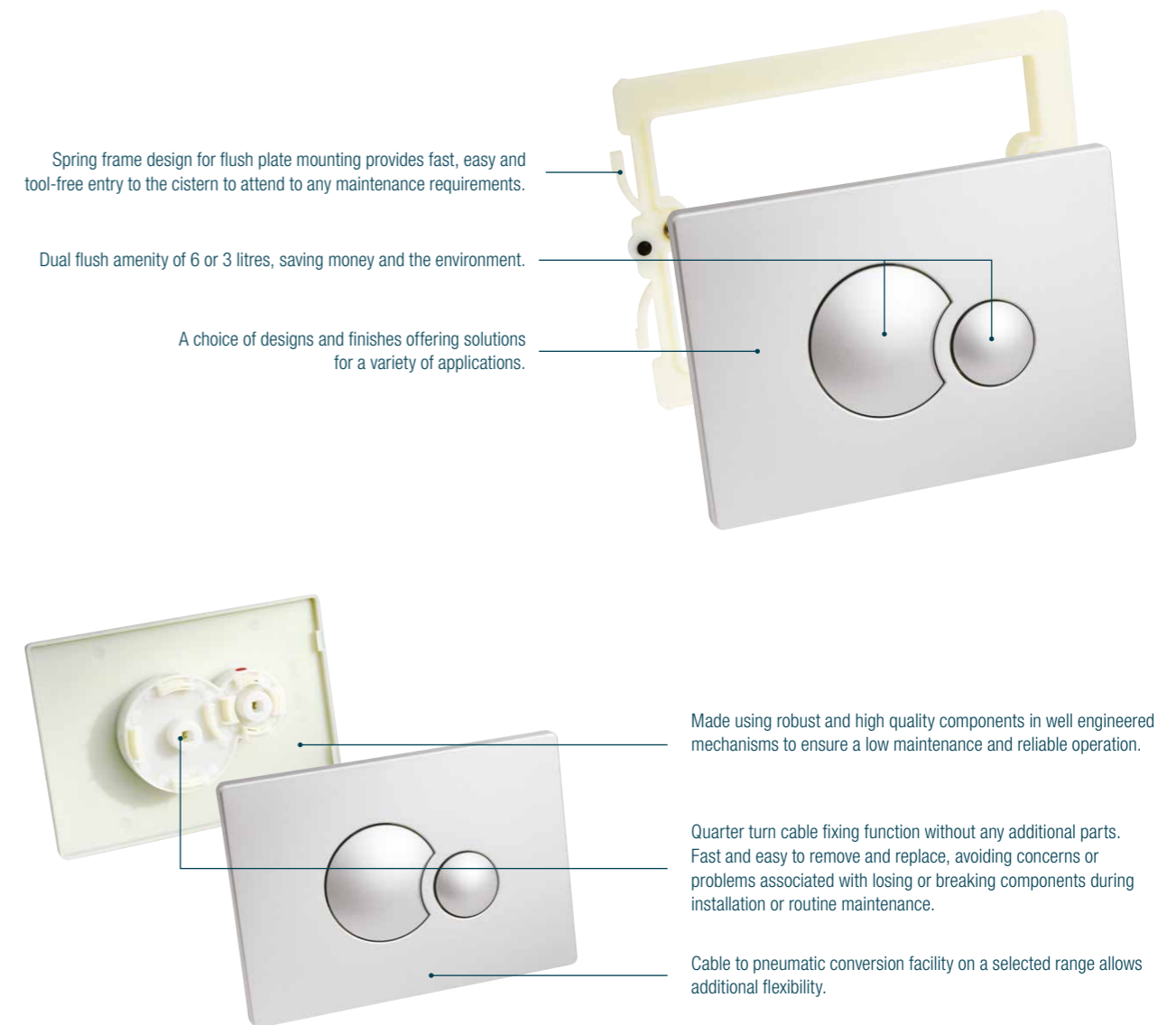
The WC furniture cabinet must have demountable panel or lid to access the concealed cistern





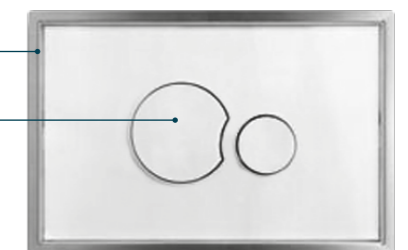
## Multikwik flush plates

The Multikwik range of flush actuation include high quality glass, as well as more traditional white and chrome finishes plates to suit all styles of bathrooms and washroom designs. All flush plates are dual flush, and offer the choice of 6 or 3 litre flushes.



Interchangeable flush actuation plate design provides choice to upgrade, update or replace for whole life use.

1mm recessed frame provides unobtrusive design.  
Colour co-ordinated or colour-matched buttons provide design choice.



SANITARY SYSTEMS / WC FRAMES

WC FRAME

TRM1820



| PRODUCT CODE              |                 |
|---------------------------|-----------------|
| TRM1820                   |                 |
| SIZE (mm)                 | 820             |
| OUTLET CONNECTION         | 110mm spigot    |
| WEIGHT (KG)               | 17              |
| DIMENSIONS (mm) A x B x C | 820 x 525 x 205 |

WC FRAME

TRM1985



| PRODUCT CODE              |                 |
|---------------------------|-----------------|
| TRM1985                   |                 |
| SIZE (mm)                 | 985             |
| OUTLET CONNECTION         | 110mm spigot    |
| WEIGHT (KG)               | 18              |
| DIMENSIONS (mm) A x B x C | 985 x 525 x 205 |

WC FRAME

TRM1200



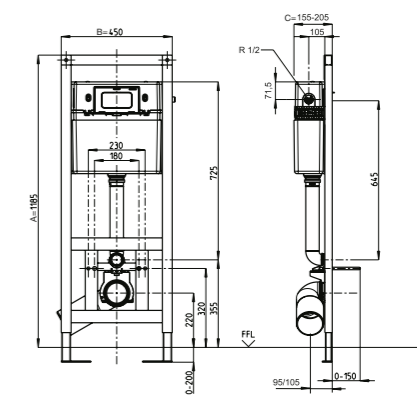
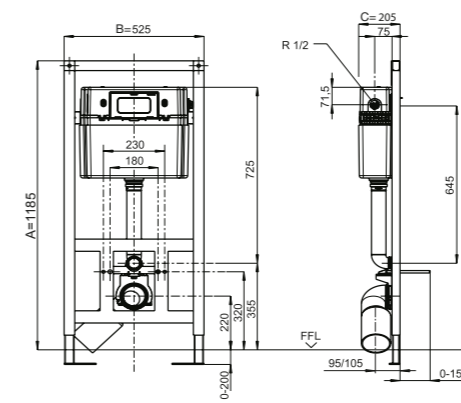
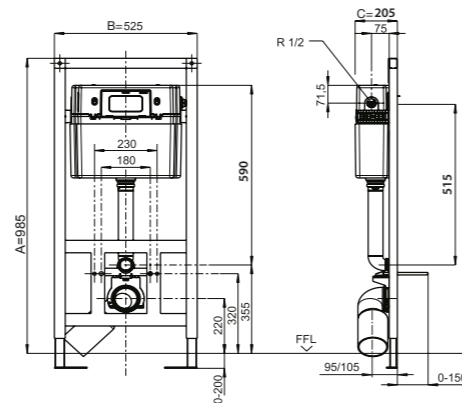
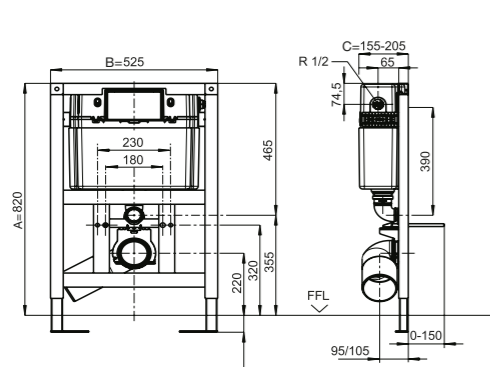
| PRODUCT CODE              |                  |
|---------------------------|------------------|
| TRM1200                   |                  |
| SIZE (mm)                 | 1185             |
| OUTLET CONNECTION         | 110mm spigot     |
| WEIGHT (KG)               | 18               |
| DIMENSIONS (mm) A x B x C | 1185 x 525 x 205 |

WC FRAME SPECIAL NEEDS

TRM1201



| PRODUCT CODE              |                  |
|---------------------------|------------------|
| TRM1201                   |                  |
| SIZE (mm)                 | 1185             |
| OUTLET CONNECTION         | 110mm spigot     |
| WEIGHT (KG)               | 17               |
| DIMENSIONS (mm) A x B x C | 1185 x 450 x 155 |



|                                  |   |
|----------------------------------|---|
| FLOOR DEPTH ADJUSTMENT           | 0 - 200mm                                       |
| FRAME WIDTH                      | 525mm   |
| INSTALLATION DEPTH               | 155 - 400mm                                     |
| FRAME WEIGHT SUPPORT             | 400kg   |
| FLUSH VOLUME                     | 6/3L  |
| MIN/MAX WATER PRESSURE           | 0.5 - 10.0 bar                                  |
| WATER SUPPLY INLET CONNECTION    | Male 1/2" BSP left, right or rear               |
| WC / WHB / URINAL FIXING CENTRES | 230 - 180mm                                     |
| 90° OUTLET BEND                  | ØDN90 x DN100 spigot (Ø110mm)                   |
| WC pan connector (included)      | Ø90 spigot x Ø97-108 socket                     |
| FLUSH INLET PIPE                 | Ø45mm x 300mm L                                 |
| FLUSH VALVE                      | Cable operated dual flush drop valve            |
| CISTERN ACCESS                   | Front & top                                     |
| CONSTRUCTION                     | Powder coated welded steel frame                |
| APPLICATION                      | For installation below 90cm height window sill. |

|                                  |  |
|----------------------------------|--|
| FLOOR DEPTH ADJUSTMENT           | 0 - 200mm  |
| FRAME WIDTH                      | 525mm  |
| INSTALLATION DEPTH               | 155 - 400mm  |
| FRAME WEIGHT SUPPORT             | 400kg  |
| FLUSH VOLUME                     | 6/3L   |
| MIN/MAX WATER PRESSURE           | 0.5 - 10.0 bar   |
| WATER SUPPLY INLET CONNECTION    | Male 1/2" BSP left, right or rear  |
| WC / WHB / URINAL FIXING CENTRES | 230 - 180mm  |
| 90° OUTLET BEND                  | ØDN90 x DN100 spigot (Ø110mm)  |
| WC pan connector (included)      | Ø90 spigot x Ø97-108 socket  |
| FLUSH INLET PIPE                 | Ø45mm x 300mm L  |
| FLUSH VALVE                      | Cable operated dual flush drop valve   |
| CISTERN ACCESS                   | Front & top  |
| CONSTRUCTION                     | Powder coated welded steel frame   |
| APPLICATION                      | For installation to form a shelf above cistern (not in front of a 90cm height window sill) |

|                                  |  |
|----------------------------------|--|
| FLOOR DEPTH ADJUSTMENT           | 0 - 200mm                                |
| FRAME WIDTH                      | 525mm                                    |
| INSTALLATION DEPTH               | 155 - 400mm                              |
| FRAME WEIGHT SUPPORT             | 400kg                                    |
| FLUSH VOLUME                     | 6/3L or 4/2L                             |
| MIN/MAX WATER PRESSURE           | 0.5 - 10.0 bar                           |
| WATER SUPPLY INLET CONNECTION    | Male 1/2" BSP centre                     |
| WC / WHB / URINAL FIXING CENTRES | 230 - 180mm                              |
| 90° OUTLET BEND                  | ØDN90 x DN100 spigot (Ø110mm)            |
| WC pan connector (included)      | Ø90 spigot x Ø97-108 socket              |
| FLUSH INLET PIPE                 | Ø45mm x 300mm L                          |
| FLUSH VALVE                      | Cable operated dual flush drop valve     |
| CISTERN ACCESS                   | Front only                               |
| CONSTRUCTION                     | Powder coated welded steel frame         |
| APPLICATION                      | For installations with room height duct. |

|                                  |  |
|----------------------------------|--|
| FLOOR DEPTH ADJUSTMENT           | 0 - 200mm  |
| FRAME WIDTH                      | 450mm  |
| INSTALLATION DEPTH               | 155 - 400mm  |
| FRAME WEIGHT SUPPORT             | 400kg  |
| FLUSH VOLUME                     | 6/3L or 4/2L   |
| MIN/MAX WATER PRESSURE           | 0.5 - 10.0 bar   |
| WATER SUPPLY INLET CONNECTION    | Male 1/2" BSP centre   |
| WC / WHB / URINAL FIXING CENTRES | 230 - 180mm  |
| 90° OUTLET BEND                  | ØDN90 x DN100 spigot (Ø110mm)                                      |
| WC pan connector (included)      | Ø90 spigot x Ø97-108 socket  |
| FLUSH INLET PIPE                 | Ø45mm x 300mm L  |
| FLUSH VALVE                      | Cable operated dual flush drop valve                               |
| CISTERN ACCESS                   | Front only   |
| CONSTRUCTION                     | Powder coated welded steel frame                                   |
| APPLICATION                      | For special needs / disabled height WC pans with room height duct. |

SANITARY SYSTEMS / WC FRAMES

WASHBASIN FRAME

TRM2820



| PRODUCT CODE              |                 |
|---------------------------|-----------------|
|                           | TRM2820         |
| SIZE (mm)                 | 820             |
| OUTLET CONNECTION         | 40mm            |
| WEIGHT (KG)               | 8kg             |
| DIMENSIONS (mm) A x B x C | 820 x 525 x 135 |

WASHBASIN FRAME

TRM2985



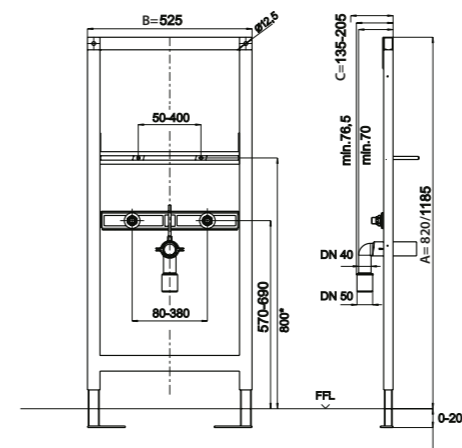
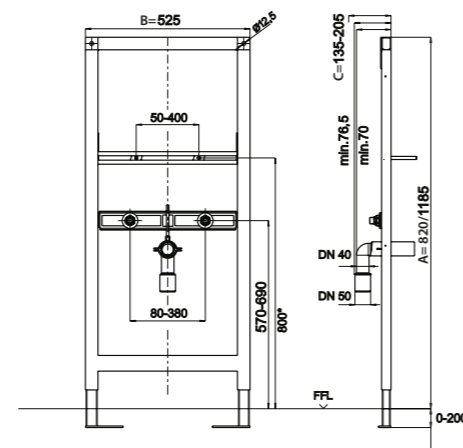
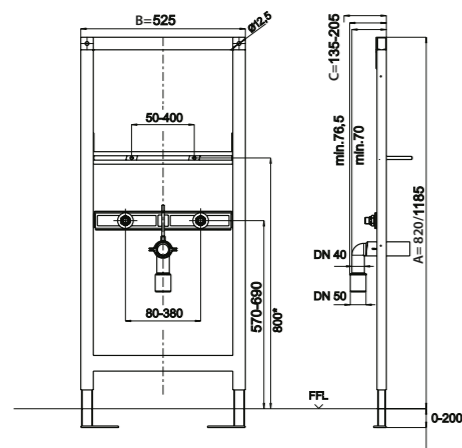
| PRODUCT CODE              |                 |
|---------------------------|-----------------|
|                           | TRM2985         |
| SIZE (mm)                 | 985             |
| OUTLET CONNECTION         | 40mm            |
| WEIGHT (KG)               | 14              |
| DIMENSIONS (mm) A x B x C | 985 x 525 x 135 |

WASHBASIN FRAME

TRM2000



| PRODUCT CODE              |                  |
|---------------------------|------------------|
|                           | TRM2000          |
| SIZE (mm)                 | 1185             |
| OUTLET CONNECTION         | 40mm             |
| WEIGHT (KG)               | 14               |
| DIMENSIONS (mm) A x B x C | 1120 x 525 x 135 |



|                                  |  |
|----------------------------------|--|
| FLOOR DEPTH ADJUSTMENT           | 0 - 200mm  |
| FRAME WIDTH                      | 525mm  |
| INSTALLATION DEPTH               | 135 - 205mm  |
| FRAME WEIGHT SUPPORT             | 150kg  |
| WC / WHB / URINAL FIXING CENTRES | 50 - 400mm   |
| 90° OUTLET BEND                  | ØDN40 x DN50 spigot                                    |
| CONSTRUCTION                     | Powder coated welded steel frame                       |
| APPLICATION                      | For wall mounted washbasins with single hole mixer tap |

|                                  |  |
|----------------------------------|--|
| FLOOR DEPTH ADJUSTMENT           | 0 - 200mm  |
| FRAME WIDTH                      | 525mm  |
| INSTALLATION DEPTH               | 135 - 205mm  |
| FRAME WEIGHT SUPPORT             | 150kg  |
| WC / WHB / URINAL FIXING CENTRES | 50 - 400mm   |
| 90° OUTLET BEND                  | ØDN40 x DN50 spigot                                    |
| CONSTRUCTION                     | Powder coated welded steel frame                       |
| APPLICATION                      | For wall mounted washbasins with single hold mixer tap |

|                                  |  |
|----------------------------------|--|
| FLOOR DEPTH ADJUSTMENT           | 0 - 200mm  |
| FRAME WIDTH                      | 525mm  |
| INSTALLATION DEPTH               | 135 - 205mm  |
| FRAME WEIGHT SUPPORT             | 150kg  |
| WC / WHB / URINAL FIXING CENTRES | 50 - 400mm   |
| 90° OUTLET BEND                  | ØDN40 x DN50 spigot                                    |
| CONSTRUCTION                     | Powder coated welded steel frame                       |
| APPLICATION                      | For wall mounted washbasins with single hole mixer tap |



SANITARY SYSTEMS / WC FRAMES

SUPPORT PANEL FRAME FOR SPECIAL NEEDS – LEFT

TRM6001



| PRODUCT CODE              |                  |
|---------------------------|------------------|
|                           | TRM6001          |
| SIZE (mm)                 | 1120             |
| WEIGHT (KG)               | 11               |
| DIMENSIONS (mm) A x B x C | 1120 x 294 x 135 |
| TYPE                      | Left             |

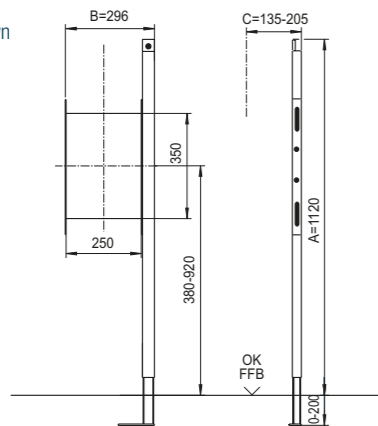
SUPPORT PANEL FRAME FOR SPECIAL NEEDS – RIGHT

TRM6002

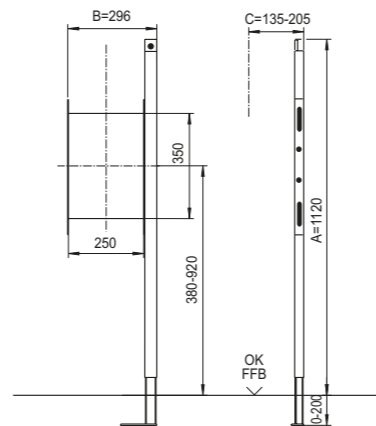


| PRODUCT CODE              |                  |
|---------------------------|------------------|
|                           | TRM6002          |
| SIZE (mm)                 | 1120             |
| WEIGHT (KG)               | 11               |
| DIMENSIONS (mm) A x B x C | 1120 x 294 x 135 |
| TYPE                      | Right            |

Right hand shown



TRA4004 (pair)  
M12 x 400 studs  
not included



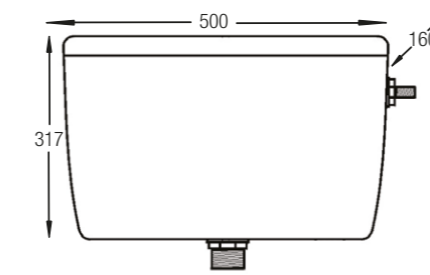
|                        |  |
|------------------------|--|
| FLOOR DEPTH ADJUSTMENT | 0 - 200mm  |
| FRAME WIDTH            | 294mm  |
| INSTALLATION DEPTH     | 135 - 205mm  |
| CONSTRUCTION           | Powder coated welded steel frame   |
| APPLICATION            | Left hand side support frame for mounting grab bars. For use with TRM1201 disabled WC frame. |

|                        |   |
|------------------------|---|
| FLOOR DEPTH ADJUSTMENT | 0 - 200mm   |
| FRAME WIDTH            | 294mm   |
| INSTALLATION DEPTH     | 135 - 205mm   |
| CONSTRUCTION           | Powder coated welded steel frame  |
| APPLICATION            | Right hand side support frame for mounting grab bars. For use with TRM1201 disabled WC frame. |

SANITARY SYSTEMS / CISTERNS

ECONOMY SIDE FILL CISTERN – WITH BUTTON

TRC1820

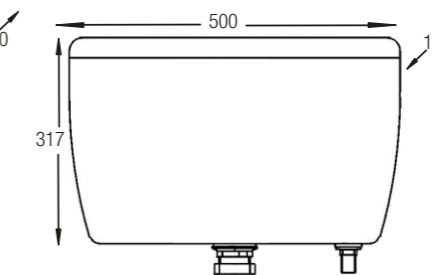


- Includes flush pipe 320 x 320 x 040 mm
- 6/3L flush adjustable to 4/2L
- Includes dual flush button (code: MFVB6B)
- Cable 800mm length overall
- Multiflush and bottom side fill valve
- WRAS approved flush valve
- WRAS approved side fill valve
- Exposed low level WC cistern (can be used for concealed installation)

|                           |                 |
|---------------------------|-----------------|
| OUTLET CONNECTION         | 1½"             |
| WEIGHT (KG)               | 2.58            |
| DIMENSIONS (mm) A x B x C | 500 x 317 x 160 |

ECONOMY BOTTOM FILL CISTERN – WITH BUTTON

TRC1821

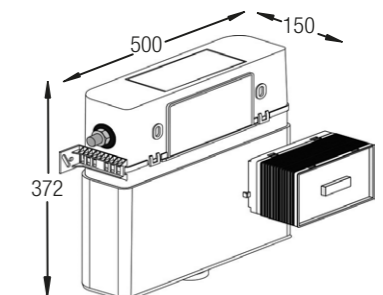


- Includes flush pipe 320 x 320 x 040 mm
- 6/3L flush adjustable to 4/2L
- Includes dual flush button (code: MFVB6B)
- Cable 800mm length overall
- Multiflush and bottom fill valve
- WRAS approved flush valve
- WRAS approved bottom fill valve
- Exposed low level WC cistern (can be used for concealed installation)

|                           |                 |
|---------------------------|-----------------|
| OUTLET CONNECTION         | 1½"             |
| WEIGHT (KG)               | 2.58            |
| DIMENSIONS (mm) A x B x C | 500 x 317 x 160 |

CONCEALED DUAL-FLUSH CISTERN

TRV1820



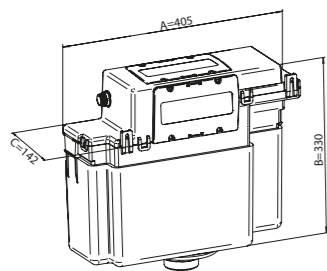
- Water pressure 0.5 – 10 bar
- Front or top access option
- 6/3 flush volume
- Cable operated
- Integral fill valve
- Integral isolation valve
- Flush bend and flush pipe included
- ½" BSP brass water supply connection

|                           |                 |
|---------------------------|-----------------|
| OUTLET CONNECTION         | 2"              |
| WEIGHT (KG)               | 2.69            |
| DIMENSIONS (mm) A x B x C | 500 x 372 x 150 |

SANITARY SYSTEMS / CISTERNS & VALVES

PROTEUS CABLE CONCEALED CISTERN WITH BUTTON

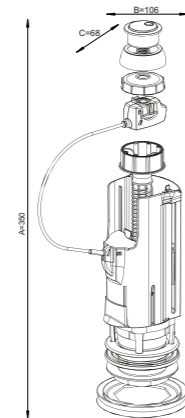
TRC1830



- Includes chrome dual flush button (code: MFVB6B)
- Water supply connection: Male 1/2" BSP (plastic) – left
- Flush valve type: Dual flush cable operated drop valve
- Cistern access: Front/ Top
- Plastic cistern and foam insulating jacket construction
- Includes integral isolating valve
- Includes flush pipe
- Cable 460mm overall
- For use in bathroom furniture

MULTIFLUSH DUAL FLUSH VALVE – 340MM CABLE

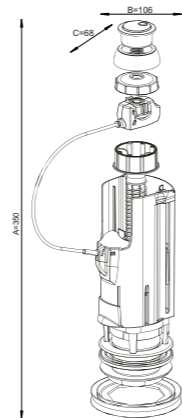
MFV1C | MFV3C



- 6/3L adjustable to 4/2L flush volume
- For use in ceramic cisterns
- Adjustable internal overflow

MULTIFLUSH DUAL FLUSH VALVE – 800MM CABLE

MFV2C | MFV4C

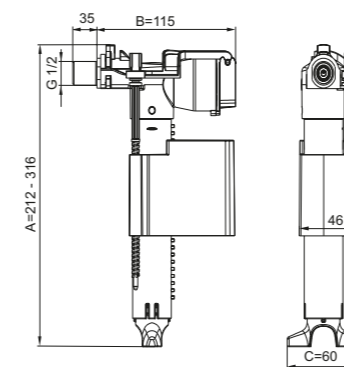


- 6/3L adjustable to 4/2L flush volume
- For use in ceramic cisterns
- Adjustable internal overflow

SANITARY SYSTEMS / VALVES

SIDE ENTRY FILL VALVE

TRS0029



- Water inlet pressure 0.5 – 10 bar
- Fill rate 3.6 L/M @ 0.5 bar
- Noise class 1:13 db (a)
- Adjustable fill volume
- Telescopic fill pipe



REASONS TO TRUST MULTIKWIK

Economy fill cistern

With the economy fill cistern you have the choice of a side fill cistern (TRC1820) or a bottom fill cistern (TRC1821) – allowing instant connection for water supply and eliminating unsightly pipes.



| PRODUCT CODE              |                                  |
|---------------------------|----------------------------------|
| TRC1830                   |                                  |
| WATER FLUSH VOLUME:       | 4/2 litres 6/3 litres adjustable |
| WATER PRESSURE:           | 0.5 – 10 bar                     |
| WEIGHT (KG)               | 1.53                             |
| DIMENSIONS (mm) A x B x C | 405 x 330 x 142                  |

| PRODUCT CODE              |                |                |
|---------------------------|----------------|----------------|
|                           | MFV1C          | MFV3C          |
| WEIGHT (KG)               | 0.37           | 0.41           |
| OUTLET SIZE               | 1 1/2"         | 2"             |
| DIMENSIONS (mm) A x B x C | 300 x 106 x 68 | 300 x 106 x 68 |

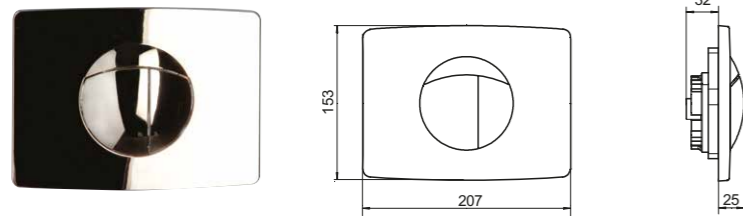
| PRODUCT CODE              |                |                |
|---------------------------|----------------|----------------|
|                           | MFV2C          | MFV4C          |
| WEIGHT (KG)               | 0.38           | 0.42           |
| OUTLET SIZE               | 1 1/2"         | 2"             |
| DIMENSIONS (mm) A x B x C | 300 x 106 x 68 | 300 x 106 x 68 |

|                           |                |
|---------------------------|----------------|
| WATER FLUSH VOLUME:       | 6/3 litres     |
| WATER PRESSURE:           | 0.5 – 10 bar   |
| WEIGHT (KG)               | 0.26           |
| DIMENSIONS (mm) A x B x C | 212 x 115 x 60 |

TRUST MULTIKWIK

All cisterns are supplied complete with high quality mechanisms for long life and easy installation. The Multikwik range offers size flexibility helping you to complete your project no matter what the size restrictions are.

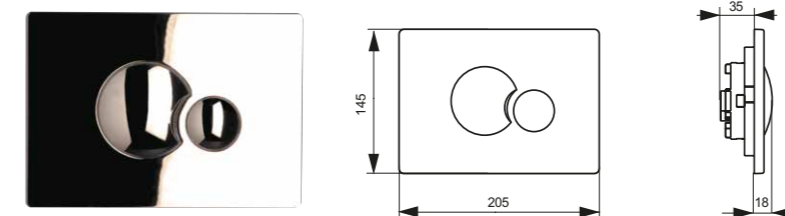
SANITARY SYSTEMS / FLUSH PLATES



SOLAR FLUSH PLATE

TRF0427S

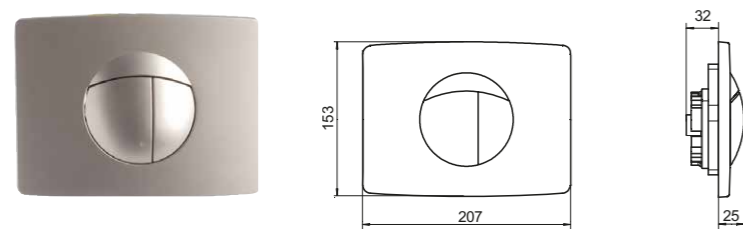
- Dual flush push plate
- Finish: Polished chrome
- Material: Plastic
- Surface mounted



ECLIPSE FLUSH PLATE

TRF0427E

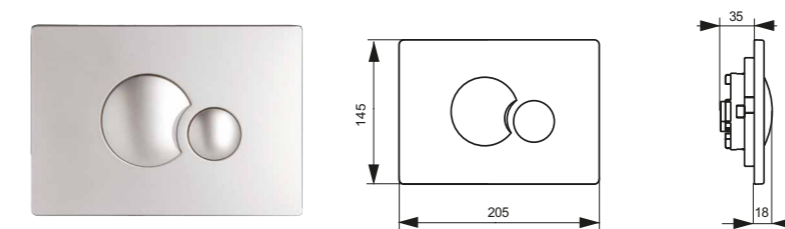
- Dual flush push plate
- Finish: Polished chrome
- Material: Plastic
- Surface mounted



SOLAR FLUSH PLATE

TRF0428S

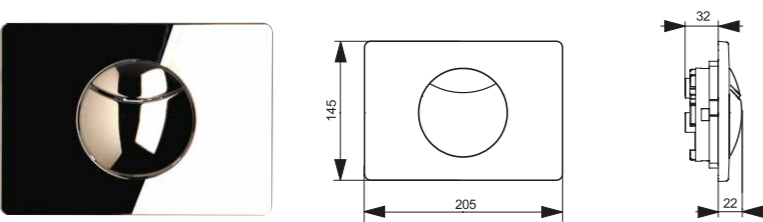
- Dual flush push plate
- Finish: Satin chrome
- Material: Plastic
- Surface mounted



ECLIPSE FLUSH PLATE

TRF0428E

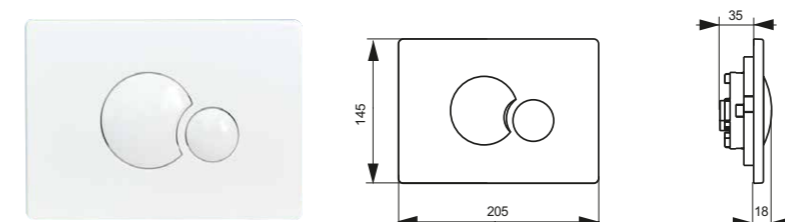
- Dual flush push plate
- Finish: Satin chrome
- Material: Plastic
- Surface mounted



CRESCENT FLUSH PLATE

TRF0427C

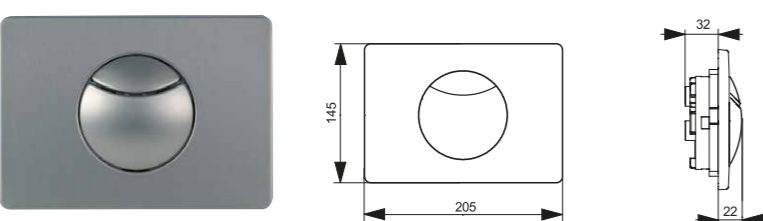
- Dual flush push plate
- Finish: Polished chrome
- Material: Plastic
- Surface mounted



ECLIPSE FLUSH PLATE

TRF0400E

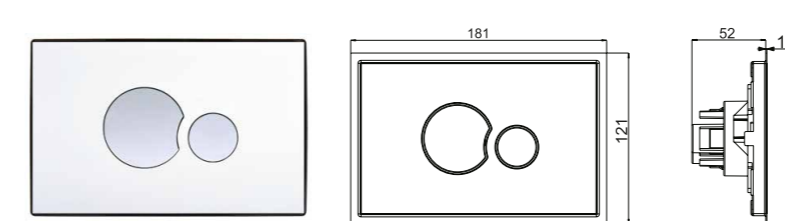
- Dual flush push plate
- Finish: White
- Material: Plastic
- Surface mounted



CRESCENT FLUSH PLATE

TRF0433C

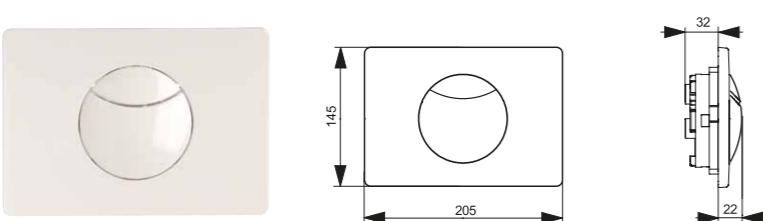
- Dual flush push plate
- Finish: Brushed stainless steel
- Material: Metal
- Surface mounted
- Includes concealed grub screw fixing
- For public / anti-vandal applications



ECLIPSE FLUSH PLATE

TRF1201E

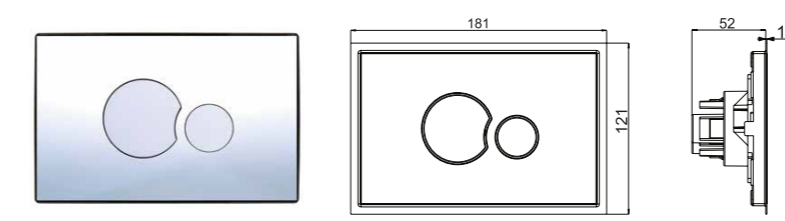
- Dual flush push plate
- Finish: White
- Material: Plastic
- Polished stainless steel frame
- Recessed mounted



CRESCENT FLUSH PLATE

TRF0400C

- Dual flush push plate
- Finish: White
- Material: Plastic
- Surface mounted

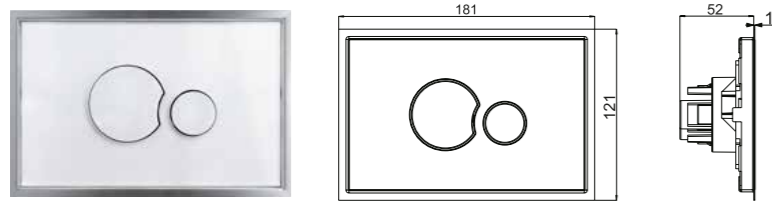


ECLIPSE FLUSH PLATE

TRF1202E

- Dual flush push plate
- Finish: Chrome
- Material: Plastic
- Polished stainless steel frame
- Recessed mounted

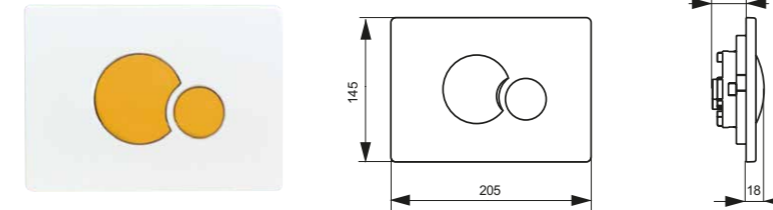
SANITARY SYSTEMS / FLUSH PLATES & BUTTONS



ECLIPSE FLUSH GLASS PLATE

TRF1215E

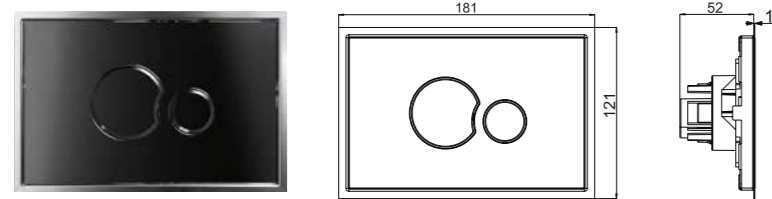
- Dual flush push plate
- Finish: White plate & buttons
- Material: Toughened safety glass
- Polished stainless steel frame
- Recessed mounted



ECLIPSE FLUSH EDUCATION PLATE

TRF1225E

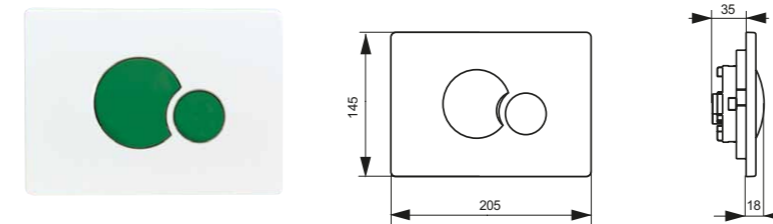
- Dual flush push plate
- Wall plate: white
- Push buttons: RAL 1023 Yellow
- Material: plastic
- Surface mounted



ECLIPSE FLUSH GLASS PLATE

TRF1216E

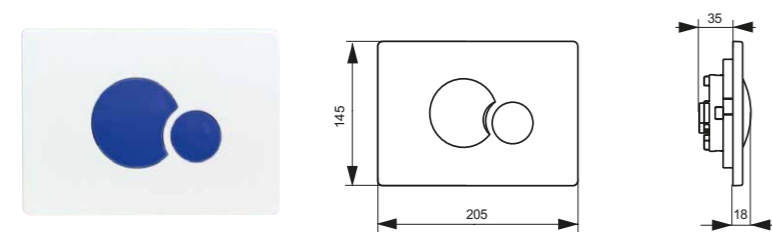
- Dual flush push plate
- Finish: Black plate & buttons
- Material: Toughened safety glass
- Polished stainless steel frame
- Recessed mounted



ECLIPSE FLUSH EDUCATION PLATE

TRF1226E

- Dual flush button
- Wall plate: white
- Push buttons: RAL 6032 Green
- Material: plastic
- Surface mounted



ECLIPSE FLUSH EDUCATION PLATE

TRF1223E

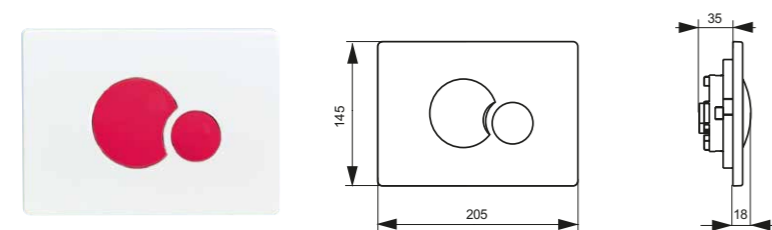
- Dual flush push plate
- Wall plate: white
- Push buttons: RAL 5002 Blue
- Material: plastic
- Surface mounted



CABLE OPERATED DUAL FLUSH BUTTON

MFVB6B

- Dual flush button
- For use with Multiflush valves only
- Finish: Chrome
- Material: Plastic



ECLIPSE FLUSH EDUCATION PLATE

TRF1224E

- Dual flush push plate
- Wall plate: white
- Push buttons: RAL 3003 Red
- Material: plastic
- Surface mounted



CABLE OPERATED DUAL FLUSH BUTTON

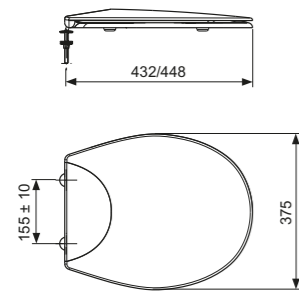
MFVB1B

- Dual flush button
- For use with Multiflush valves only
- Finish: Chrome
- Material: Plastic
- Surface mounted

SANITARY SYSTEMS / TOILET SEATS

WEY  
WC SEAT

MKKN002

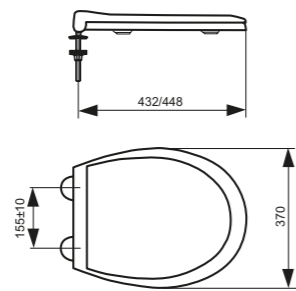


- Four point support
- Suitable for back to the wall and mounted pans
- Includes Kwiknuts
- Adjustable stainless steel hinges
- Bevelled back
- Scratch resistant surface
- Moulded thermosetting plastic
- 1.95kg

|                                  |                 |
|----------------------------------|-----------------|
| <b>COLOUR</b>                    | White           |
| <b>DIMENSIONS (mm) A x B x C</b> | 455 x 375 x 155 |

HAMBLE  
WC SEAT

MKKN003

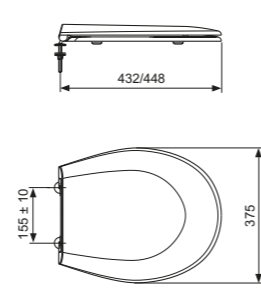


- Four point support
- Suitable for back to the wall and mounted pans
- Includes Kwiknuts
- Adjustable stainless steel hinges
- Bevelled/contoured front
- Smooth underside for easy cleaning
- Injection moulded thermoplastic
- 1.85kg

|                                  |                 |
|----------------------------------|-----------------|
| <b>COLOUR</b>                    | White           |
| <b>DIMENSIONS (mm) A x B x C</b> | 455 x 370 x 155 |

MOORS  
ANTIBAC WC SEAT

MKKN004

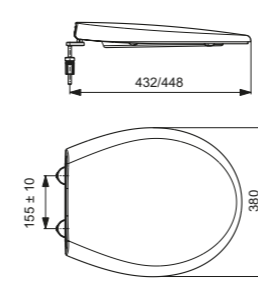


- Four point support
- Suitable for back to the wall and mounted pans
- Includes Kwiknuts
- Adjustable stainless steel hinges
- Thermosetting plastic
- Scratch resistant surface
- Adjustable stainless steel hinges
- 2.40kg

|                                  |                 |
|----------------------------------|-----------------|
| <b>COLOUR</b>                    | White           |
| <b>DIMENSIONS (mm) A x B x C</b> | 450 x 375 x 155 |

SOFT CLOSE  
WC SEAT

MKKN007

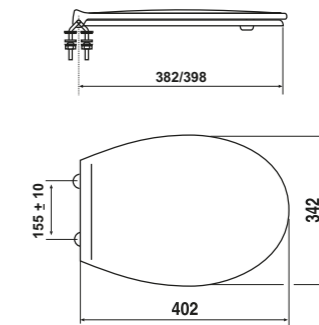


- Two point support
- Suitable for back to the wall and mounted pans
- Soft close stainless steel hinges
- Thermosetting plastic
- Scratch resistant surface
- Seat integrated in lid
- For WCs with D shaped bowl
- 2.20kg

|                                  |                 |
|----------------------------------|-----------------|
| <b>COLOUR</b>                    | White           |
| <b>DIMENSIONS (mm) A x B x C</b> | 450 x 376 x 155 |

EDUCATION  
WC SEATS

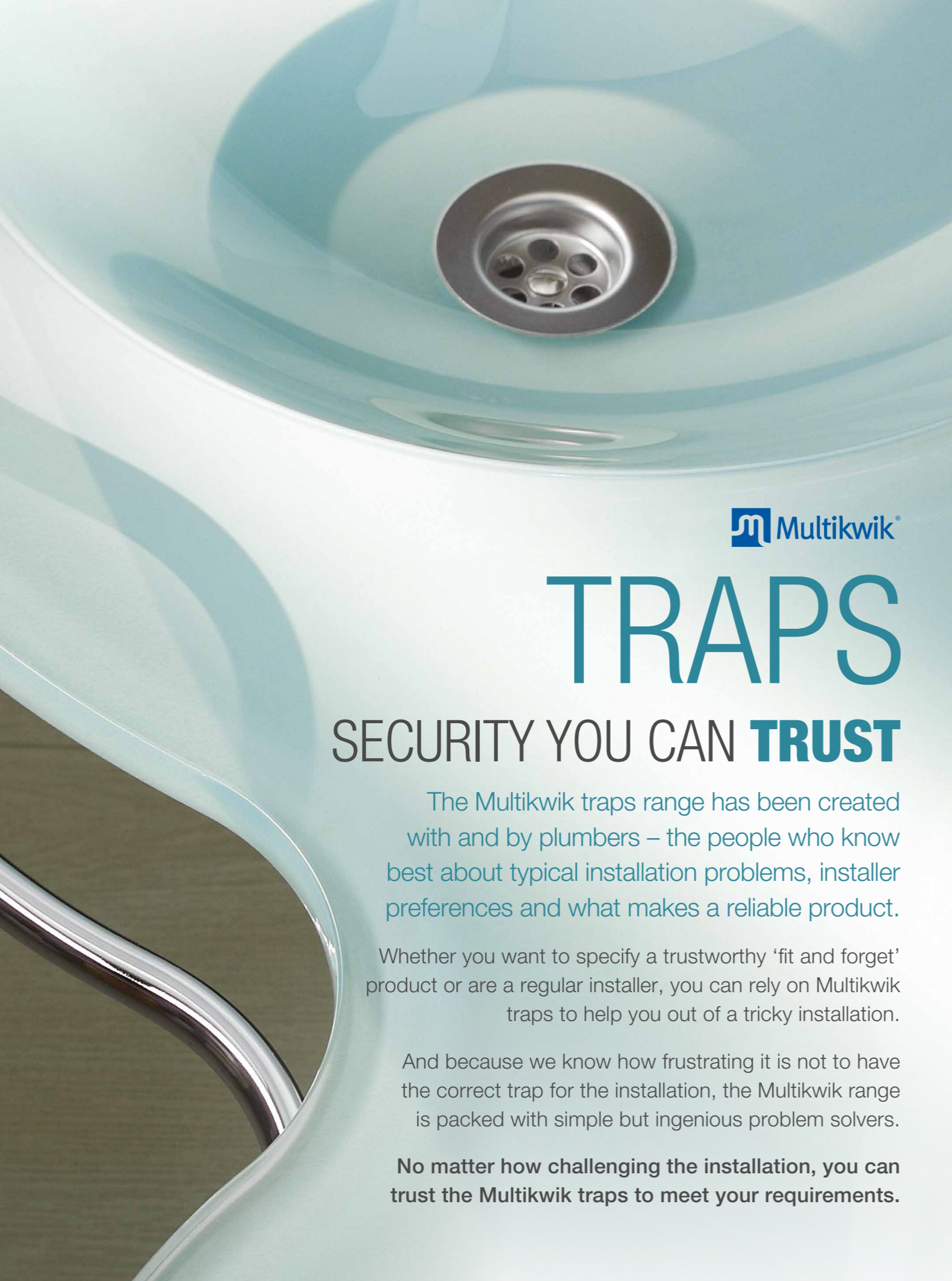
MKKN006 | MKKN005 | MKKN008 | MKKN009 | MKKN010



- White ○
- Yellow ● RAL1023
- Blue ● RAL5002
- Green ● RAL6032
- Red ● RAL3003

- Two point support
- Adjustable stainless steel hinges
- Injection moulded thermoplastic
- Smooth underside for easy cleaning
- 1.35kg

|                                  | PRODUCT CODE    |                 |                 |                 |                 |
|----------------------------------|-----------------|-----------------|-----------------|-----------------|-----------------|
|                                  | MKKN006         | MKKN005         | MKKN008         | MKKN009         | MKKN010         |
| <b>COLOUR</b>                    | White           | Yellow          | Blue            | Green           | Red             |
| <b>DIMENSIONS (mm) A x B x C</b> | 402 x 342 x 155 | 402 x 342 x 155 | 402 x 342 x 155 | 402 x 342 x 155 | 402 x 342 x 155 |



# TRAPS

## SECURITY YOU CAN **TRUST**

The Multikwik traps range has been created with and by plumbers – the people who know best about typical installation problems, installer preferences and what makes a reliable product.

Whether you want to specify a trustworthy ‘fit and forget’ product or are a regular installer, you can rely on Multikwik traps to help you out of a tricky installation.

And because we know how frustrating it is not to have the correct trap for the installation, the Multikwik range is packed with simple but ingenious problem solvers.

**No matter how challenging the installation, you can trust the Multikwik traps to meet your requirements.**



### Multifit Nut & Seal

All Multikwik traps have a multifit nut and seal that allow connection to push fit, solvent and copper pipes. The thumb recesses make it easy to tighten, even with wet hands to ensure a ‘fit and forget’ installation every time!

### Water Seal

BS EN 12056-2:2000 states that traps which discharge to a soil stack should have a 75mm seal. Other seal depths can be installed, if installation with required seal depth isn't possible due to size restrictions.

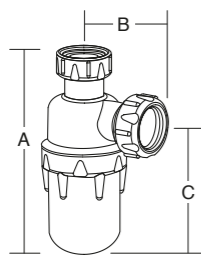
- 50mm water seal traps can be fitted to baths, shower trays and basins with spray taps and no plugs.
- 38mm water seal traps can be used on ground floors when connecting to flat bottomed appliances that discharge to a back inlet gully.

TRAPS / BOTTLE TRAP

KEY: Resealable Adjustable

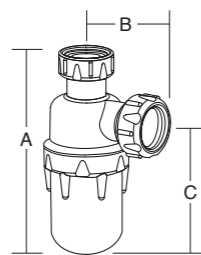
BOTTLE – STANDARD

B032 | B040



BOTTLE – RESEALING

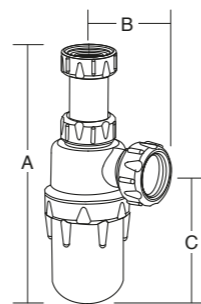
B032R | B040R



■ Resealing function to prevent loss of water seal

BOTTLE – ADJUSTABLE

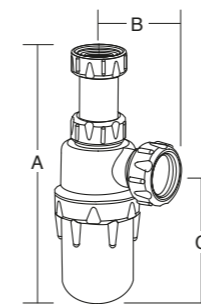
B032A | B040A



■ Adjustable inlet for installation flexibility  
■ Min height: 195mm; max height: 300mm

BOTTLE – ADJUSTABLE / RESEALING

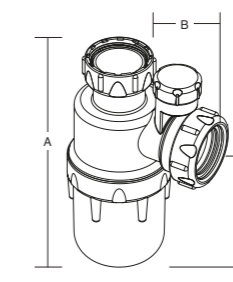
B032RA | B040RA



■ Adjustable inlet for installation flexibility  
■ Resealing function to prevent loss of water seal  
■ Min height: 195mm; max height: 300mm

BOTTLE – ANTI-VAC

B032V | B040V



■ Resealing function to prevent loss of water seal  
■ Anti-vac allows air into the waste pipes to prevent self-syphonage of the traps water seal and gurgling

|                           | PRODUCT CODE   |                |
|---------------------------|----------------|----------------|
|                           | B032           | B040           |
| SIZE (mm)                 | 32             | 40             |
| COLOUR                    | White          | White          |
| WATER SEAL DEPTH (mm)     | 75             | 75             |
| WEIGHT (KG)               | 0.15           | 0.18           |
| DIMENSIONS (mm) A x B x C | 180 x 74 x 125 | 184 x 78 x 127 |

|                           | PRODUCT CODE   |                |
|---------------------------|----------------|----------------|
|                           | B032R          | B040R          |
| SIZE (mm)                 | 32             | 40             |
| COLOUR                    | White          | White          |
| WATER SEAL DEPTH (mm)     | 75             | 75             |
| WEIGHT (KG)               | 0.16           | 0.19           |
| DIMENSIONS (mm) A x B x C | 180 x 74 x 125 | 184 x 78 x 127 |

|                           | PRODUCT CODE   |                |
|---------------------------|----------------|----------------|
|                           | B032A          | B040A          |
| SIZE (mm)                 | 32             | 40             |
| COLOUR                    | White          | White          |
| WATER SEAL DEPTH (mm)     | 75             | 75             |
| WEIGHT (KG)               | 0.19           | 0.22           |
| DIMENSIONS (mm) A x B x C | 195 x 74 x 125 | 195 x 78 x 127 |

|                           | PRODUCT CODE   |                |
|---------------------------|----------------|----------------|
|                           | B032RA         | B040RA         |
| SIZE (mm)                 | 32             | 40             |
| COLOUR                    | White          | White          |
| WATER SEAL DEPTH (mm)     | 75             | 75             |
| WEIGHT (KG)               | 0.20           | 0.23           |
| DIMENSIONS (mm) A x B x C | 195 x 74 x 125 | 195 x 78 x 127 |

|                           | PRODUCT CODE   |                |
|---------------------------|----------------|----------------|
|                           | B032V          | B040V          |
| SIZE (mm)                 | 32             | 40             |
| COLOUR                    | White          | White          |
| WATER SEAL DEPTH (mm)     | 75             | 75             |
| WEIGHT (KG)               | 0.16           | 0.19           |
| DIMENSIONS (mm) A x B x C | 180 x 74 x 125 | 186 x 84 x 125 |

REASONS TO TRUST MULTIKWIK

Anti-vac trap

1

When syphonic action occurs, the anti-vac unit allows air to be drawn into the discharge pipe.

2

Through the negative pressure the valve rises, lets air in and that way the water seal remains unaffected.

3

Once the negative pressure stops, the valve closes again, making the trap water and airtight.

No gurgling – enjoy the sound of silence!



TRUST MULTIKWIK

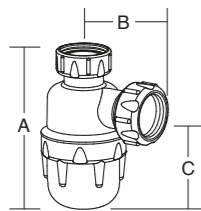
Our high quality components include, but are not limited to, our compression nuts, slip rings and EPDM profiled rubber seals – ensuring a secure watertight joint and helping achieve a fuss free 'no call back' installation.

TRAPS / BOTTLE TRAP / STRAIGHT THROUGH TRAP

KEY: Resealable Adjustable

BOTTLE – COMPACT

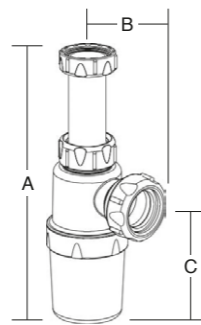
B032S | B040S



- Use when connecting into flat bottomed appliances that discharge into a gully

BOTTLE – SLIMLINE

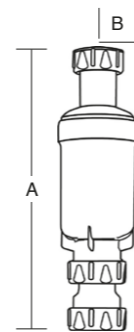
BS032



- Space saving
- Adjustable inlet for installation flexibility
- Minimum height: 195mm; max height 300mm

STRAIGHT THROUGH ADJUSTABLE

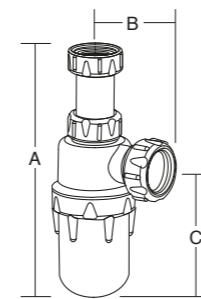
ST032



- Unique slimline design, saving space
- Adjustable telescopic outlet for installation flexibility
- Easy to clean and maintain

BOTTLE – ADJUSTABLE

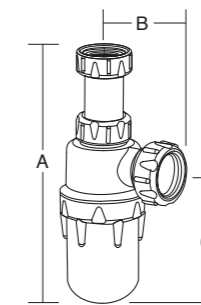
B032ACR



- High quality mirror chrome finish
- Includes 400mm x 32mm chromed pipe
- Adjustable inlet for installation flexibility
- Min height: 195mm; max height: 300mm

BOTTLE – ADJUSTABLE / RESEALING

B032RACR B040RACR



- Resealing inlet for installation flexibility
- High quality mirror chrome finish
- Adjustable inlet for installation flexibility
- Min height: 195/225mm; max height: 300/327mm

|                           | PRODUCT CODE  |                |
|---------------------------|---------------|----------------|
|                           | B032S         | B040S          |
| SIZE (mm)                 | 32            | 40             |
| COLOUR                    | White         | White          |
| WATER SEAL DEPTH (mm)     | 38            | 38             |
| WEIGHT (KG)               | 0.12          | 0.13           |
| DIMENSIONS (mm) A x B x C | 136 x 75 x 85 | 152 x 81 x 100 |

|                           | PRODUCT CODE   |
|---------------------------|----------------|
|                           | BS032          |
| SIZE (mm)                 | 32             |
| COLOUR                    | White          |
| WATER SEAL DEPTH (mm)     | 75             |
| WEIGHT (KG)               | 0.15           |
| DIMENSIONS (mm) A x B x C | 182 x 71 x 112 |

|                       | PRODUCT CODE |
|-----------------------|--------------|
|                       | ST032        |
| SIZE (mm)             | 32           |
| COLOUR                | White        |
| WATER SEAL DEPTH (mm) | 75           |
| WEIGHT (KG)           | 0.24         |
| DIMENSIONS (mm) A x B | 270 x 33     |

|                           | PRODUCT CODE   |
|---------------------------|----------------|
|                           | B032ACR        |
| SIZE (mm)                 | 32             |
| COLOUR                    | Chrome         |
| WATER SEAL DEPTH (mm)     | 75             |
| WEIGHT (KG)               | 0.45           |
| DIMENSIONS (mm) A x B x C | 195 x 74 x 125 |

|                           | PRODUCT CODE   |                |
|---------------------------|----------------|----------------|
|                           | B032RACR       | B040RACR       |
| SIZE (mm)                 | 32             | 40             |
| COLOUR                    | Chrome         | Chrome         |
| WATER SEAL DEPTH (mm)     | 75             | 75             |
| WEIGHT (KG)               | 0.25           | 0.29           |
| DIMENSIONS (mm) A x B x C | 195 x 74 x 125 | 225 x 80 x 130 |

REASONS TO TRUST MULTIKWIK

Resealing trap

1

When syphonic action occurs, air gets drawn through the bypass device, allowing an air break.

2

Once the negative pressure stops, the water goes back and reseals the trap.



Bottle Trap Resealing

The resealing function helps to prevent loss of water.

Easily removed and cleaned to ensure 100% reliability.



TRUST MULTIKWIK

The smooth, clean, internal surfaces facilitate self-cleaning and avoid debris build-up.

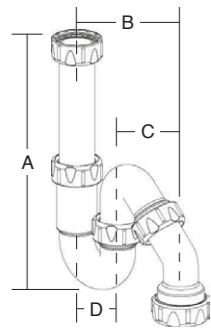


TRAPS / TUBULAR SWIVEL TRAP / RUNNING TRAP

KEY: Resealable Adjustable

UNIVERSAL ALL IN ONE

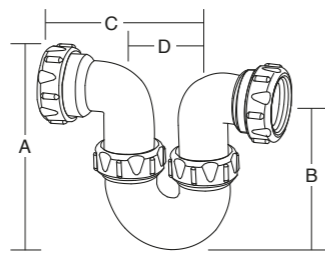
SP032 | SP040



- Adjustable inlet for installation flexibility
- Multi position outlet adjusts 360° providing installation flexibility
- Use as either an 'S' or 'P' trap

RUNNING

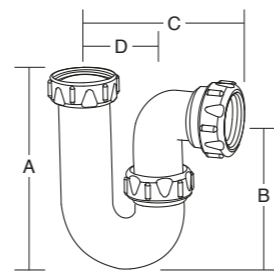
RP032 | RP040 | RP050X



- Use to trap a range of appliances

'P' TRAP

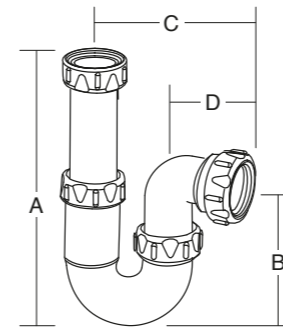
P032 | P040 | P050



- Use for horizontal pipework

'P' TRAP – ADJUSTABLE

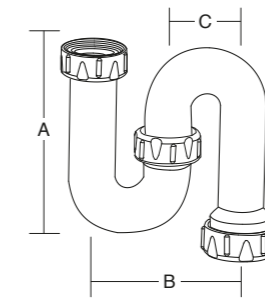
P032A | P040A



- Adjustable inlet for installation flexibility
- Min height: 220mm; max height: 270mm

'S' TRAP

S032 | S040



- Use for vertical pipework

REASONS TO TRUST MULTIKWIK

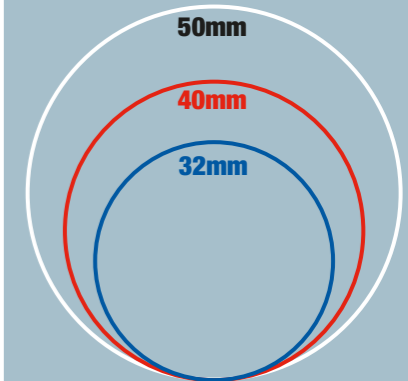
Multi position outlet

The multi position outlet adjusts 360° for installations where space is at a premium or the pipework is misaligned.



Slip ring colours

To ensure accuracy and efficiency all Multikwik traps have unique slip ring colours to aid size identification.



|                               | PRODUCT CODE        |                     |
|-------------------------------|---------------------|---------------------|
|                               | SP032               | SP040               |
| SIZE (mm)                     | 32                  | 40                  |
| COLOUR                        | White               | White               |
| WATER SEAL DEPTH (mm)         | 75                  | 75                  |
| WEIGHT (KG)                   | 0.19                | 0.22                |
| DIMENSIONS (mm) A x B x C x D | 267 x 140 x 85 x 55 | 285 x 140 x 80 x 65 |

|                               | PRODUCT CODE         |                      |                      |
|-------------------------------|----------------------|----------------------|----------------------|
|                               | RP032                | RP040                | RP050X               |
| SIZE (mm)                     | 32                   | 40                   | 50                   |
| COLOUR                        | White                | White                | White                |
| WATER SEAL DEPTH (mm)         | 75                   | 75                   | 75                   |
| WEIGHT (KG)                   | 0.16                 | 0.20                 | 0.25                 |
| DIMENSIONS (mm) A x B x C x D | 135 x 130 x 115 x 60 | 160 x 145 x 130 x 65 | 185 x 165 x 160 x 75 |

|                               | PRODUCT CODE         |                      |                      |
|-------------------------------|----------------------|----------------------|----------------------|
|                               | P032                 | P040                 | P050                 |
| SIZE (mm)                     | 32                   | 40                   | 50                   |
| COLOUR                        | White                | White                | White                |
| WATER SEAL DEPTH (mm)         | 75                   | 75                   | 75                   |
| WEIGHT (KG)                   | 0.11                 | 0.14                 | 0.22                 |
| DIMENSIONS (mm) A x B x C x D | 140 x 125 x 115 x 60 | 165 x 145 x 130 x 65 | 190 x 165 x 160 x 75 |

|                               | PRODUCT CODE         |                      |
|-------------------------------|----------------------|----------------------|
|                               | P032A                | P040A                |
| SIZE (mm)                     | 32                   | 40                   |
| COLOUR                        | White                | White                |
| WATER SEAL DEPTH (mm)         | 75                   | 75                   |
| WEIGHT (KG)                   | 0.15                 | 0.20                 |
| DIMENSIONS (mm) A x B x C x D | 220 x 135 x 115 x 60 | 245 x 145 x 130 x 65 |

|                           | PRODUCT CODE   |                |
|---------------------------|----------------|----------------|
|                           | S032           | S040           |
| SIZE (mm)                 | 32             | 40             |
| COLOUR                    | White          | White          |
| WATER SEAL DEPTH (mm)     | 75             | 75             |
| WEIGHT (KG)               | 0.14           | 0.17           |
| DIMENSIONS (mm) A x B x C | 160 x 110 x 55 | 160 x 130 x 65 |

TRUST MULTIKWIK

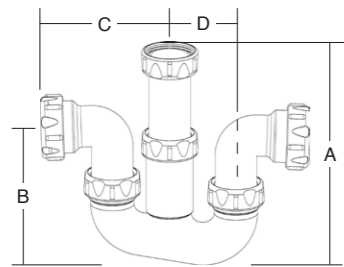
All Multikwik traps have a multifit nut and seal that allow connection to push fit, solvent and copper pipes.

TRAPS / TUBULAR SWIVEL TRAP / SHOWER WASTE TRAP

KEY: Resealable Adjustable

TUBULAR SWIVEL

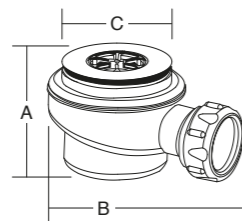
SWM040A



- Adjustable inlet for installation flexibility
- Inlet and outlet swivels to aid easy connection to pipes even in confined spaces

SHOWER – COMPACT

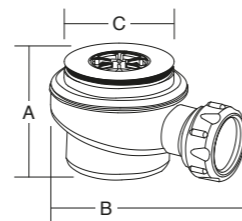
S5040C



- Chrome waste
- 70mm flange
- High flow rate: 0.76 l/s

SHOWER – COMPACT

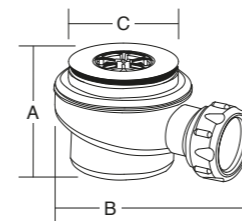
S5040W



- White waste
- 70mm flange
- High flow rate: 0.76 l/s

SHOWER – RESEALING

S5040CR



- Chrome waste
- Eliminates self-syphonage and gurgling through resealing device
- 70mm flange
- High flow rate: 0.76 l/s

|                               | PRODUCT CODE         |
|-------------------------------|----------------------|
|                               | SWM040A              |
| SIZE (mm)                     | 40                   |
| COLOUR                        | White                |
| WATER SEAL DEPTH (mm)         | 75                   |
| WEIGHT (KG)                   | 0.25                 |
| DIMENSIONS (mm) A x B x C x D | 255 x 150 x 127 x 65 |

|                           | PRODUCT CODE  |
|---------------------------|---------------|
|                           | S5040C        |
| SIZE (mm)                 | 40 Outlet     |
| COLOUR                    | White         |
| WATER SEAL DEPTH (mm)     | 50            |
| WEIGHT (KG)               | 0.18          |
| DIMENSIONS (mm) A x B x C | 92 x 150 x 70 |

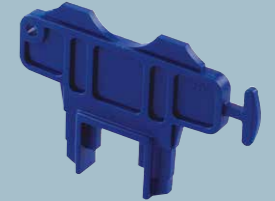
|                           | PRODUCT CODE  |
|---------------------------|---------------|
|                           | S5040W        |
| SIZE (mm)                 | 40 Outlet     |
| COLOUR                    | White         |
| WATER SEAL DEPTH (mm)     | 50            |
| WEIGHT (KG)               | 0.18          |
| DIMENSIONS (mm) A x B x C | 92 x 150 x 70 |

|                           | PRODUCT CODE  |
|---------------------------|---------------|
|                           | S5040CR       |
| SIZE (mm)                 | 40 Outlet     |
| COLOUR                    | White         |
| WATER SEAL DEPTH (mm)     | 50            |
| WEIGHT (KG)               | 0.18          |
| DIMENSIONS (mm) A x B x C | 92 x 150 x 70 |

REASONS TO TRUST MULTIKWIK

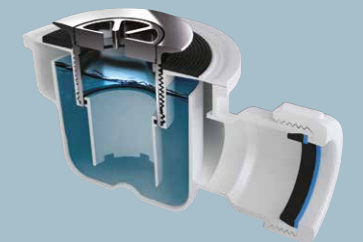
Access key

All 40mm shower traps are supplied with an access key for installation, easy cleaning and maintenance.



Resealing device

Install a resealing shower trap to eliminate self-syphonage and eradicate the gurgling in your system.



TRUST MULTIKWIK

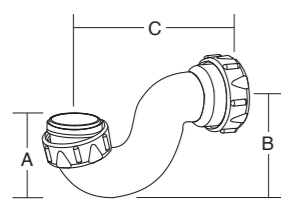
The SWM040A Tubular Swivel Utility Trap is one of the most versatile fittings on the market, it swivels to any angle to accommodate any under-sink pipework configuration and the inlet is telescopic to allow maximum adjustment.

TRAPS / BATH WASTE TRAP

KEY: Resealable Adjustable

BATH – ONE PIECE

P1940

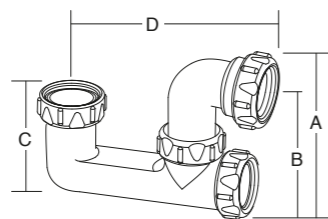


- For low level floors where a deeper water seal trap doesn't fit
- For appliances that discharge into a gully

|                           | PRODUCT CODE  |
|---------------------------|---------------|
|                           | P1940         |
| SIZE (mm)                 | 40            |
| COLOUR                    | White         |
| WATER SEAL DEPTH (mm)     | 19            |
| WEIGHT (KG)               | 0.08          |
| DIMENSIONS (mm) A x B x C | 70 x 75 x 145 |

BATH – LOW LEVEL

P5040

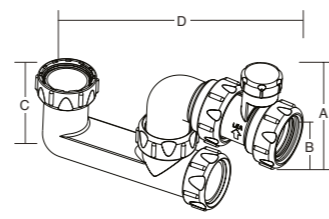


- Rodding point for cleaning

|                               | PRODUCT CODE         |
|-------------------------------|----------------------|
|                               | P5040                |
| SIZE (mm)                     | 40                   |
| COLOUR                        | White                |
| WATER SEAL DEPTH (mm)         | 50                   |
| WEIGHT (KG)                   | 0.15                 |
| DIMENSIONS (mm) A x B x C x D | 140 x 110 x 89 x 172 |

BATH – LOW LEVEL ANTI-VAC

P5040V

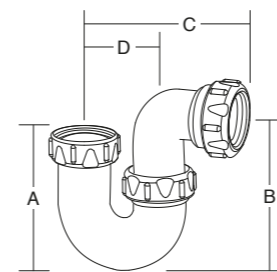


- Anti-vac allows air into the waste pipes to prevent syphonage of the water seal and gurgling
- Rodding point for cleaning

|                               | PRODUCT CODE         |
|-------------------------------|----------------------|
|                               | P5040V               |
| SIZE (mm)                     | 40                   |
| COLOUR                        | White                |
| WATER SEAL DEPTH (mm)         | 50                   |
| WEIGHT (KG)                   | 0.21                 |
| DIMENSIONS (mm) A x B x C x D | 135 x 105 x 89 x 230 |

BATH – SWIVEL 'P' LOW LEVEL INLET

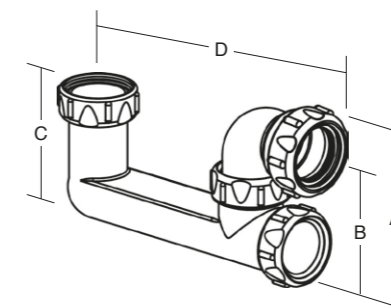
P040L



|                               | PRODUCT CODE         |
|-------------------------------|----------------------|
|                               | P040L                |
| SIZE (mm)                     | 40                   |
| COLOUR                        | White                |
| WATER SEAL DEPTH (mm)         | 75                   |
| WEIGHT (KG)                   | 0.13                 |
| DIMENSIONS (mm) A x B x C x D | 125 x 150 x 127 x 65 |

BATH – STANDARD

P6040



- Rodding point for cleaning

|                               | PRODUCT CODE         |
|-------------------------------|----------------------|
|                               | P6040                |
| SIZE (mm)                     | 40                   |
| COLOUR                        | White                |
| WATER SEAL DEPTH (mm)         | 60                   |
| WEIGHT (KG)                   | 0.17                 |
| DIMENSIONS (mm) A x B x C x D | 140 x 110 x 98 x 220 |

REASONS TO TRUST MULTIKWIK

Size guide

32mm

- Hand basin
- Bidet
- Drinking fountain
- Kitchen appliances

40mm

- Bath
- Shower
- Sink
- Urinal

50mm

- Range of basins
- Range of urinals
- Catering sinks
- Hospital appliances

TRUST MULTIKWIK

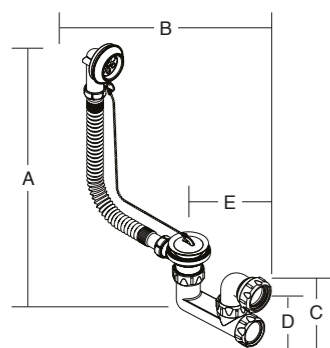
All Multikwik traps have a 75mm seal unless otherwise stated.

TRAPS / TRAP ACCESSORIES

KEY: Resealable Adjustable

BATH – LOW LEVEL

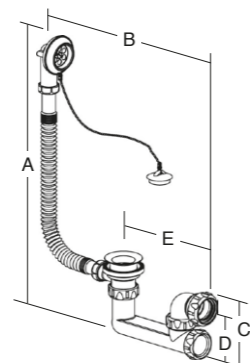
P5040F



- Flexible overflow pipe for ease of installation
- Plug tidy overflow to retain plug when not in use

BATH – STANDARD

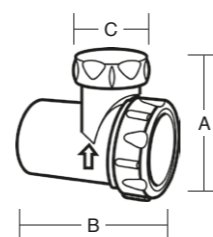
P6040F



- Flexible overflow pipe for ease of installation
- Plug tidy overflow to retain plug when not in use

ANTI-VAC GURGLEMASTER

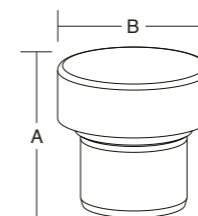
WV032 | WV040



- Anti-vac allows air traps into the waste pipe to prevent gurgling and self-syphonage of the traps water seal
- Quick installation with simple multifit in-line assembly

ANTI-SYPHON UNIT

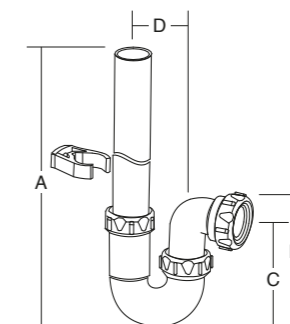
WW150 | WW151



- To BS EN 12380
- Anti-vac allows air into the waste pipe to prevent gurgling and self-syphonage of the traps water seal
- Use with any BS EN 1566/5255 solvent weld sockets

WASHING MACHINE

PWM040



- Includes 500mm standpipe, retaining clips, screws and raw plugs

REASONS TO TRUST MULTIKWIK

Plug tidy overflow

Wondering about the plug tidy overflow feature? It retains the plug, when the bath is not in use.



Gurgle master

Can convert many traps from standard to anti-vac trap through quick in-line assembly.



TRUST MULTIKWIK

Part H requires ventilation of a soil stack to prevent water seals being drawn. Multikwik offers a number of unique and innovative solutions for ventilation to drainage systems such as our anti-syphon unit.

|                                   | PRODUCT CODE                |
|-----------------------------------|-----------------------------|
|                                   | P5040F                      |
| SIZE (mm)                         | 40                          |
| COLOUR                            | White                       |
| WATER SEAL DEPTH (mm)             | 50                          |
| WEIGHT (KG)                       | 0.37                        |
| DIMENSIONS (mm) A x B x C x D x E | 355 x 325 x 140 x 115 x 175 |

|                                   | PRODUCT CODE                |
|-----------------------------------|-----------------------------|
|                                   | P6040F                      |
| SIZE (mm)                         | 40                          |
| COLOUR                            | White                       |
| WATER SEAL DEPTH (mm)             | 60                          |
| WEIGHT (KG)                       | 0.39                        |
| DIMENSIONS (mm) A x B x C x D x E | 410 x 375 x 140 x 115 x 220 |

|                           | PRODUCT CODE |              |
|---------------------------|--------------|--------------|
|                           | WV032        | WV040        |
| SIZE (mm)                 | 32           | 40           |
| COLOUR                    | White        | White        |
| WEIGHT (KG)               | 0.05         | 0.06         |
| DIMENSIONS (mm) A x B x C | 80 x 90 x 39 | 90 x 90 x 40 |

|                       | PRODUCT CODE |         |
|-----------------------|--------------|---------|
|                       | WW150        | WW151   |
| SIZE (mm)             | 32           | 40      |
| COLOUR                | White        | White   |
| WEIGHT (KG)           | 0.05         | 0.05    |
| DIMENSIONS (mm) A x B | 57 x 61      | 60 x 61 |

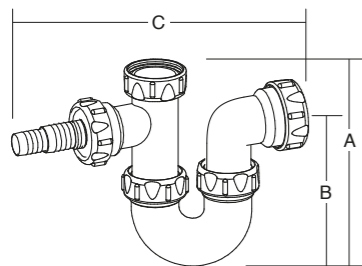
|                               | PRODUCT CODE         |
|-------------------------------|----------------------|
|                               | PWM040               |
| SIZE (mm)                     | 40                   |
| COLOUR                        | White                |
| WATER SEAL DEPTH (mm)         | 75                   |
| WEIGHT (KG)                   | 0.29                 |
| DIMENSIONS (mm) A x B x C x D | 560 x 160 x 140 x 65 |

TRAPS / UTILITY WASTE TRAP

KEY: Resealable Adjustable

UTILITY 'P' COMPACT  
– SINGLE NOZZLE

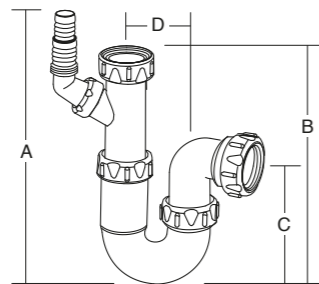
PWM040T



- Nozzle for connecting a washing machine or dishwasher

ADJUSTABLE UTILITY 'P'  
– SINGLE NOZZLE

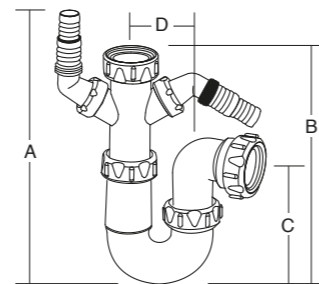
PWM040S



- Adjustable inlet for installation flexibility
- For connecting a washing machine or dishwasher
- Non-return valve to prevent backflow in nozzle
- Min height: 250mm; max height: 310mm

ADJUSTABLE UTILITY 'P'  
– DOUBLE NOZZLE

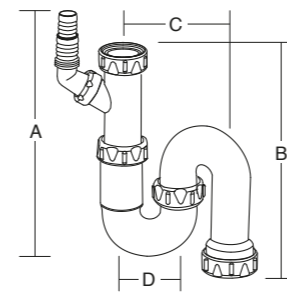
PWM040D



- Adjustable inlet for installation flexibility
- For connecting two appliances
- Non-return valve to prevent backflow in nozzle
- Min height: 250mm; max height: 310mm

ADJUSTABLE UTILITY 'S'  
– SINGLE NOZZLE

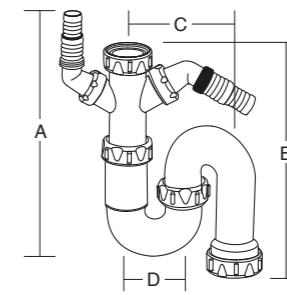
SWM040S



- Adjustable inlet for installation flexibility
- For connecting a washing machine and a dishwasher
- Non-return valve to prevent backflow in nozzle
- Min height: 250mm; max height: 310mm

ADJUSTABLE UTILITY 'S'  
– DOUBLE NOZZLE

SWM040D



- Adjustable inlet for installation flexibility
- For connecting two appliances
- Non-return valve to prevent backflow in nozzle
- Min height: 250mm; max height: 330mm

REASONS TO TRUST MULTIKWIK

Non-return valve

To prevent the backflow of dirty water to your appliances, all nozzles are fitted with a non-return valve for peace of mind!



Multikwik nozzles

They allow a simple connection to washing machines and dishwashers. The stepped inlet ensures that even if the pipe isn't entirely true, it will still form a reliable watertight environment.



|                           | PRODUCT CODE<br>PWM040T |
|---------------------------|-------------------------|
| SIZE (mm)                 | 40                      |
| COLOUR                    | White                   |
| WATER SEAL DEPTH (mm)     | 75                      |
| WEIGHT (KG)               | 0.21                    |
| DIMENSIONS (mm) A x B x C | 190 x 145 x 270         |

|                               | PRODUCT CODE<br>PWM040S |
|-------------------------------|-------------------------|
| SIZE (mm)                     | 40                      |
| COLOUR                        | White                   |
| WATER SEAL DEPTH (mm)         | 75                      |
| WEIGHT (KG)                   | 0.20                    |
| DIMENSIONS (mm) A x B x C x D | 250 x 215 x 145 x 65    |

|                               | PRODUCT CODE<br>PWM040D |
|-------------------------------|-------------------------|
| SIZE (mm)                     | 40                      |
| COLOUR                        | White                   |
| WATER SEAL DEPTH (mm)         | 75                      |
| WEIGHT (KG)                   | 0.23                    |
| DIMENSIONS (mm) A x B x C x D | 250 x 215 x 145 x 65    |

|                               | PRODUCT CODE<br>SWM040S |
|-------------------------------|-------------------------|
| SIZE (mm)                     | 40                      |
| COLOUR                        | White                   |
| WATER SEAL DEPTH (mm)         | 75                      |
| WEIGHT (KG)                   | 0.24                    |
| DIMENSIONS (mm) A x B x C x D | 250 x 217 x 125 x 65    |

|                               | PRODUCT CODE<br>SWM040D |
|-------------------------------|-------------------------|
| SIZE (mm)                     | 40                      |
| COLOUR                        | White                   |
| WATER SEAL DEPTH (mm)         | 75                      |
| WEIGHT (KG)                   | 0.26                    |
| DIMENSIONS (mm) A x B x C x D | 250 x 220 x 125 x 65    |

TRUST MULTIKWIK

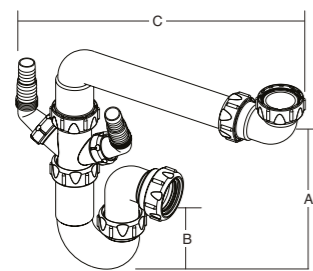
All nozzles are supplied with a blanking cap to keep the inside of the product clean – an important benefit, especially on site!

TRAPS / BOWL KITS

KEY: Resealable Adjustable

SPACE SAVER KIT

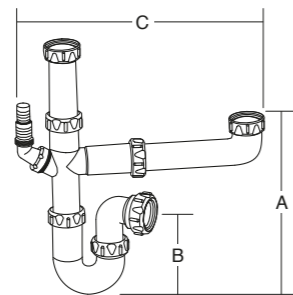
SBK040D



- Single bowl, double nozzle
- Flexible installation with full width and height adjustment

1½ BOWL KIT – SINGLE NOZZLE

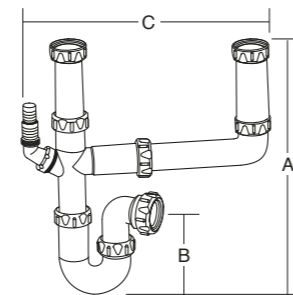
XSB040S



- Flexible installation with full width and height adjustment

DOUBLE BOWL KIT – SINGLE NOZZLE

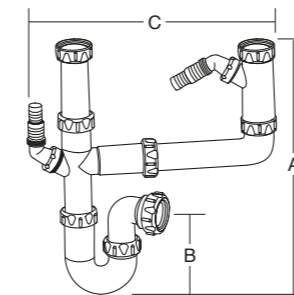
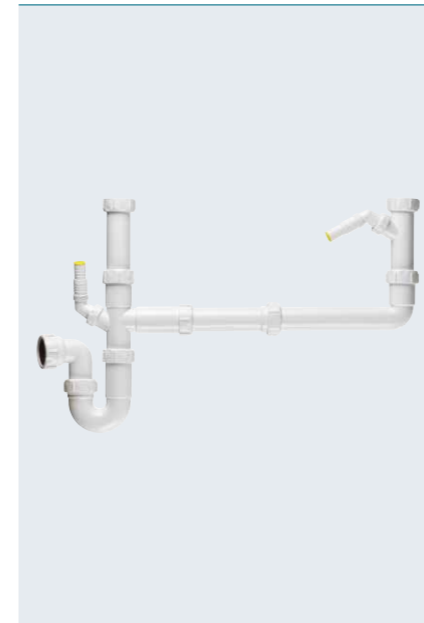
DBK040S



- Flexible installation with full width and height adjustment

EXTENDED DOUBLE BOWL KIT – DOUBLE NOZZLE

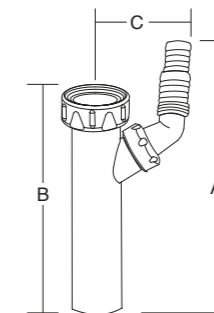
DBKDS040



- Flexible installation with full width and height adjustment

TRAP HEIGHT ADJUSTER – SINGLE NOZZLE

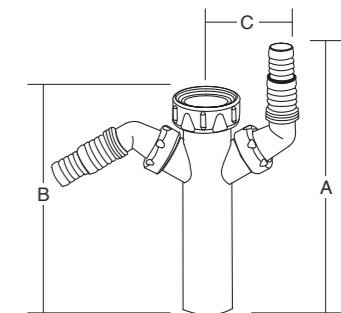
WA040S



- For connections to washing machines & dishwashers
- Non-return valve prevents backflow in nozzle

TRAP HEIGHT ADJUSTER – DOUBLE NOZZLE

WA040D



- For connections to washing machines & dishwashers
- Non-return valve prevents backflow in nozzle

|                           | PRODUCT CODE    |
|---------------------------|-----------------|
|                           | SBK040D         |
| SIZE (mm)                 | 40              |
| COLOUR                    | White           |
| WATER SEAL DEPTH (mm)     | 75              |
| WEIGHT (KG)               | 0.34            |
| DIMENSIONS (mm) A x B x C | 330 x 145 x 375 |

|                           | PRODUCT CODE    |
|---------------------------|-----------------|
|                           | XSB040S         |
| SIZE (mm)                 | 40              |
| COLOUR                    | White           |
| WATER SEAL DEPTH (mm)     | 75              |
| WEIGHT (KG)               | 0.36            |
| DIMENSIONS (mm) A x B x C | 410 x 140 x 395 |

|                           | PRODUCT CODE    |
|---------------------------|-----------------|
|                           | DBK040S         |
| SIZE (mm)                 | 40              |
| COLOUR                    | White           |
| WATER SEAL DEPTH (mm)     | 75              |
| WEIGHT (KG)               | 0.42            |
| DIMENSIONS (mm) A x B x C | 410 x 140 x 395 |

|                           | PRODUCT CODE    |
|---------------------------|-----------------|
|                           | DBKDS040        |
| SIZE (mm)                 | 40              |
| COLOUR                    | White           |
| WATER SEAL DEPTH (mm)     | 75              |
| WEIGHT (KG)               | 0.49            |
| DIMENSIONS (mm) A x B x C | 410 x 140 x 610 |

|                           | PRODUCT CODE   |
|---------------------------|----------------|
|                           | WA040S         |
| SIZE (mm)                 | 40             |
| COLOUR                    | White          |
| WEIGHT (KG)               | 0.07           |
| DIMENSIONS (mm) A x B x C | 195 x 150 x 70 |

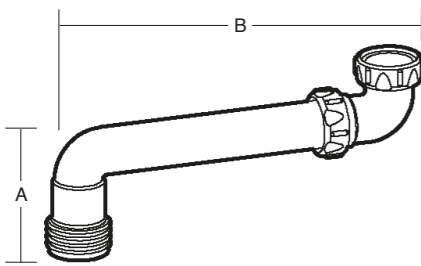
|                           | PRODUCT CODE   |
|---------------------------|----------------|
|                           | WA040D         |
| SIZE (mm)                 | 40             |
| COLOUR                    | White          |
| WEIGHT (KG)               | 0.10           |
| DIMENSIONS (mm) A x B x C | 195 x 150 x 78 |

TRAPS / WASTE ACCESSORIES

KEY: Resealable Adjustable

SPACE SAVER

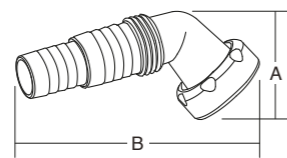
SBSK040



- Space saving design: pushes the trap & pipework to the back of the cupboard
- Trap not included

NOZZLE – ANGLED

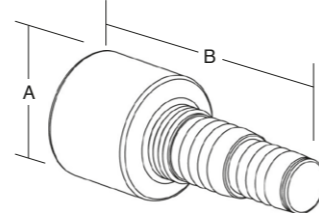
NK001



- Threaded connection to trap
- Simple connection for washing machines & dishwashers
- Non-return valve prevents backflow in nozzle
- Nozzle can be cut to suit a variety of applications
- To suit 1" & ¾" hose diameter

NOZZLE – STRAIGHT

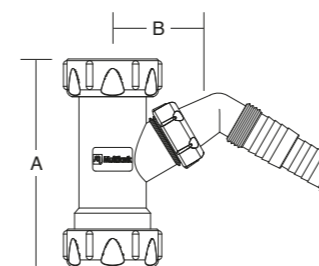
NKT001



- To suit 1" and ¾" hose diameter
- For a variety of appliance hose connections
- Non-return valve prevents backflow
- Nozzle can be cut to suit a variety of applications

WASHING MACHINE TEE

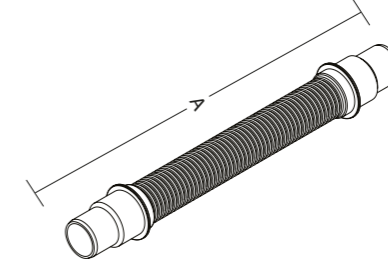
WMT001



- 1½" BSP sink waste connection
- Can be inserted between an existing trap and outlet

FLEXIBLE CONNECTOR

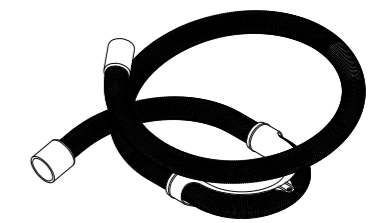
WW170



- Not suitable for solvent weld
- 350mm length. Cut end to suit compression fittings

WASHING MACHINE HOSE 1.5M

WW171



- Fit in accordance with the appliance manufacturers guidelines
- Non kink hose with rest support for reliable installation

|                       | PRODUCT CODE |
|-----------------------|--------------|
|                       | SBSK040      |
| SIZE (mm)             | 40           |
| COLOUR                | White        |
| WEIGHT (KG)           | 0.11         |
| DIMENSIONS (mm) A x B | 125 x 325    |

|                       | PRODUCT CODE |
|-----------------------|--------------|
|                       | NK001        |
| SIZE (mm)             | 40           |
| COLOUR                | White        |
| WEIGHT (KG)           | 0.02         |
| DIMENSIONS (mm) A x B | 55 x 110     |

|                       | PRODUCT CODE |
|-----------------------|--------------|
|                       | NKT001       |
| SIZE (mm)             | 40           |
| COLOUR                | White        |
| WEIGHT (KG)           | 0.02         |
| DIMENSIONS (mm) A x B | 44 x 103     |

|                       | PRODUCT CODE |
|-----------------------|--------------|
|                       | WMT001       |
| SIZE (mm)             | 40           |
| COLOUR                | White        |
| WEIGHT (KG)           | 0.06         |
| DIMENSIONS (mm) A x B | 113 x 65     |

|                   | PRODUCT CODE |
|-------------------|--------------|
|                   | WW170        |
| SIZE (mm)         | 32/40        |
| COLOUR            | White        |
| WEIGHT (KG)       | 0.1          |
| DIMENSIONS (mm) A | 350          |

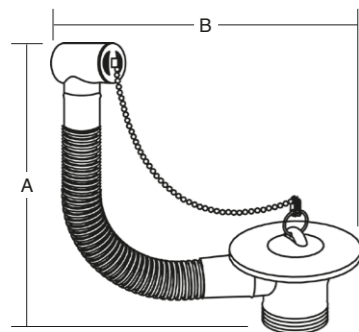
|                   | PRODUCT CODE |
|-------------------|--------------|
|                   | WW171        |
| SIZE (mm)         | 40           |
| COLOUR            | Grey         |
| WEIGHT (KG)       | 0.15         |
| DIMENSIONS (mm) A | 1500         |

TRAPS / WASTE ACCESSORIES

KEY: Resealable Adjustable

BASIC SINK WASTE AND OVERFLOW KIT

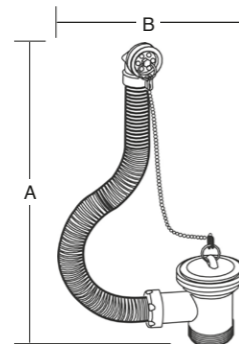
CWS01



- Extendable overflow to suit various overflow heights
- Flexible overflow pipe

SINK WASTE AND OVERFLOW KIT

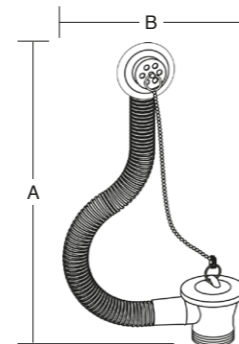
W4070RF



- Extendable overflow to suit various overflow heights
- Flexible overflow pipe

BASIC BATH WASTE AND OVERFLOW KIT

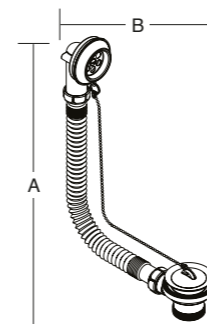
CWB01



- Extendable overflow to suit various overflow heights
- Flexible overflow pipe

BATH WASTE AND OVERFLOW KIT

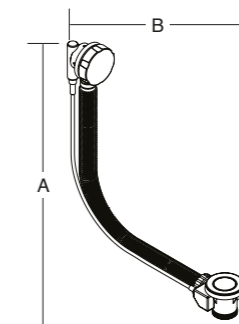
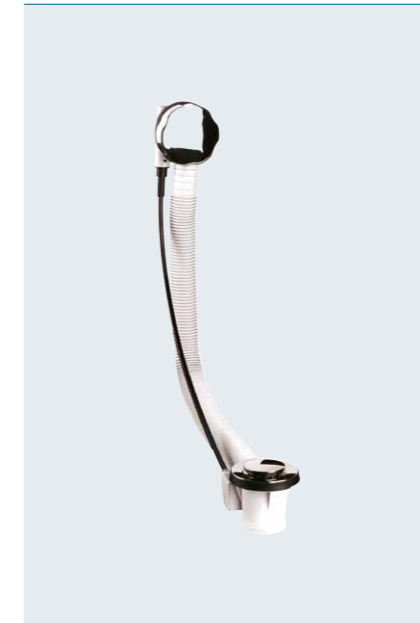
W040F



- Extendable overflow to suit various overflow heights
- Flexible overflow pipe
- Plug tidy overflow to retain the plug when not in use

BATH WASTE AND OVERFLOW KIT

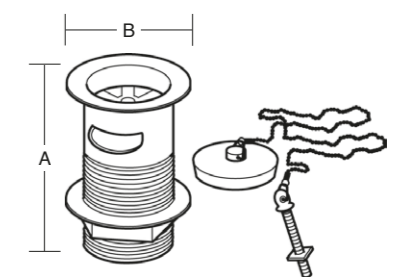
WPU040C



- Extendable overflow to suit various overflow heights
- Flexible overflow pipe
- Includes pop up waste

SLOTTED BASIN WASTE OUTLET

SBW01



- Includes polyplug, chain and stay
- Slotted – for basins with an integral overflow

|                       | PRODUCT CODE |
|-----------------------|--------------|
|                       | CWS01        |
| SIZE (mm)             | 40           |
| COLOUR                | Black        |
| WEIGHT (KG)           | 0.13         |
| DIMENSIONS (mm) A x B | 220 x 115    |

|                       | PRODUCT CODE |
|-----------------------|--------------|
|                       | W4070RF      |
| SIZE (mm)             | 40           |
| COLOUR                | White        |
| WEIGHT (KG)           | 0.16         |
| DIMENSIONS (mm) A x B | 275 x 155    |

|                       | PRODUCT CODE |
|-----------------------|--------------|
|                       | CWB01        |
| SIZE (mm)             | 40           |
| COLOUR                | Black        |
| WEIGHT (KG)           | 0.16         |
| DIMENSIONS (mm) A x B | 275 x 160    |

|                       | PRODUCT CODE |
|-----------------------|--------------|
|                       | W040F        |
| SIZE (mm)             | 40           |
| COLOUR                | White        |
| WEIGHT (KG)           | 0.34         |
| DIMENSIONS (mm) A x B | 295 x 375    |

|                       | PRODUCT CODE |
|-----------------------|--------------|
|                       | WPU040C      |
| SIZE (mm)             | 40           |
| COLOUR                | White        |
| WEIGHT (KG)           | 0.72         |
| DIMENSIONS (mm) A x B | 430 x 385    |

|                       | PRODUCT CODE    |
|-----------------------|-----------------|
|                       | SBW01           |
| SIZE (mm)             | 32              |
| COLOUR                | Stainless steel |
| WEIGHT (KG)           | 0.18            |
| DIMENSIONS (mm) A x B | 85 x 60         |



# COMPRESSION WASTE

## RELIABILITY YOU CAN **TRUST**

When designing and building any type of development, we know that costs and aesthetics can play a huge part in making decisions.

That's where Multikwik offers the choice – standard white compression waste components for hidden plumbing, and a chrome covered compression waste system for exposed pipework. Both options have a smooth inner bore, to reduce the chance of blockages and thumb recesses for easy hand tightening.

**PROBLEM SOLVED**

**Multiflex**  
MFW32 | MFW40

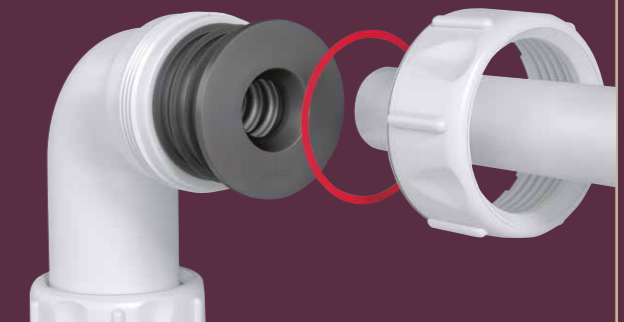
- Adjustable from 0 – 90°
- Suitable for almost any installation



**PROBLEM SOLVED**

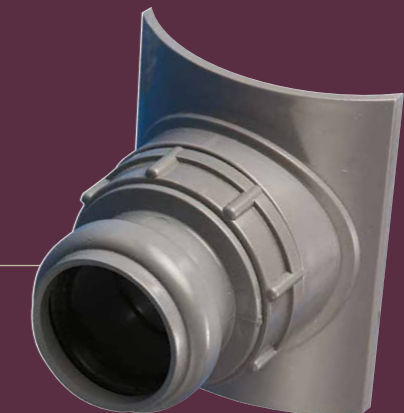
**Condense adaptor**  
EB40R

- Adapts to condense line
- Fits most sizes of overflow (16.5 – 24mm)



**PROBLEM SOLVED**

**Easy Boss**  
MKEB4032G | MKEB4032B



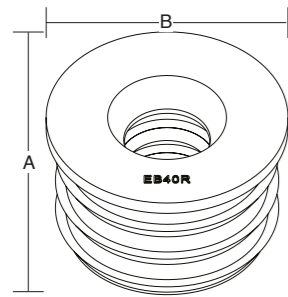
- Connects 32mm or 40mm solvent or push fit pipe to 110mm soil stack
- No straps, ideal for limited access installations
- No solvent cement required for push fit connection
- Includes adaptor for easy solvent weld connection

COMPRESSION WASTE

KEY: Resealable Adjustable

OVERFLOW  
CONDENSE ADAPTOR

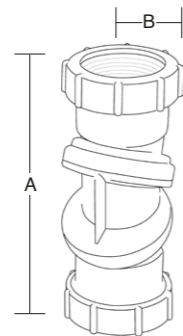
EB40R



- Adapts to condensate pipework
- Connects 40mm to 16.5 – 24mm

MULTIFLEX BEND

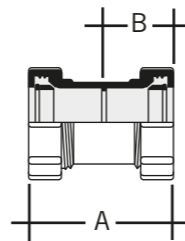
MFW32 | MFW40



- Adjustable from 0 – 90° to meet demands of almost any installation

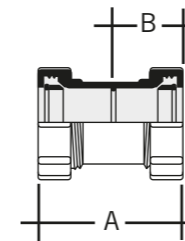
REDUCER

WP124 | WP225



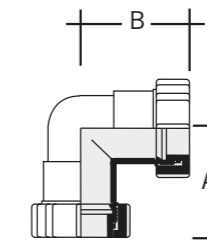
STRAIGHT COUPLING

WP114 | WP115 | WP216



90° BEND

WP120 | WP121 | WP222



REASONS TO  
TRUST MULTIKWIK

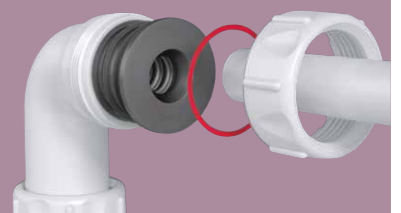
Multiflex bend

A problem solver to help overcome some of the challenges of non uniform installations.



Condensate adaptor

The EB40R condensate overflow adaptor is a simple solution to prevent your condensate pipe from freezing. It fits any 40mm trap or 40mm compression fitting and is designed to accept almost all overflow pipe sizes from 16.5 to 24mm.



TRUST MULTIKWIK

The thumb recesses of Multikwik compression waste make it easy to tighten, even with wet hands to ensure a 'fit and forget' job every time!

|                   | PRODUCT CODE |
|-------------------|--------------|
|                   | EB40R        |
| SIZE (mm)         | 40           |
| COLOUR            | Black        |
| WEIGHT (KG)       | 0.03         |
| DIMENSIONS (mm) A | 34 x 50      |

|                       | PRODUCT CODE |          |
|-----------------------|--------------|----------|
|                       | MFW32        | MFW40    |
| SIZE (mm)             | 32           | 40       |
| COLOUR                | White        | White    |
| WEIGHT (KG)           | 0.07         | 0.10     |
| DIMENSIONS (mm) A x B | 131 x 26     | 145 x 31 |

|                       | PRODUCT CODE |         |
|-----------------------|--------------|---------|
|                       | WP124        | WP225   |
| SIZE (mm)             | 32/40        | 40/50   |
| COLOUR                | White        | White   |
| WEIGHT (KG)           | 0.06         | 0.07    |
| DIMENSIONS (mm) A x B | 70 x 35      | 78 x 39 |

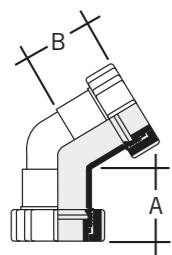
|                       | PRODUCT CODE |         |          |
|-----------------------|--------------|---------|----------|
|                       | WP114        | WP115   | WP216    |
| SIZE (mm)             | 32           | 40      | 50       |
| COLOUR                | White        | White   | White    |
| WEIGHT (KG)           | 0.04         | 0.05    | 0.10     |
| DIMENSIONS (mm) A x B | 70 x 35      | 70 x 35 | 100 x 50 |

|                       | PRODUCT CODE |         |         |
|-----------------------|--------------|---------|---------|
|                       | WP120        | WP121   | WP222   |
| SIZE (mm)             | 32           | 40      | 50      |
| COLOUR                | White        | White   | White   |
| WEIGHT (KG)           | 0.05         | 0.06    | 0.13    |
| DIMENSIONS (mm) A x B | 55 x 55      | 60 x 60 | 83 x 83 |

COMPRESSION WASTE

135° BEND

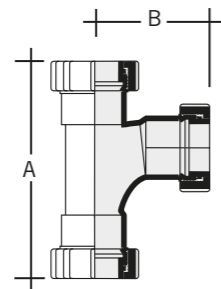
WP126 | WP127 | WP218



|                       | PRODUCT CODE |         |         |
|-----------------------|--------------|---------|---------|
|                       | WP126        | WP127   | WP218   |
| SIZE (mm)             | 32           | 40      | 50      |
| COLOUR                | White        | White   | White   |
| WEIGHT (KG)           | 0.04         | 0.05    | 0.12    |
| DIMENSIONS (mm) A x B | 50 x 37      | 50 x 37 | 70 x 52 |

92.5° TEE

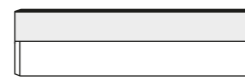
WP128 | WP129 | WP230



|                       | PRODUCT CODE |          |          |
|-----------------------|--------------|----------|----------|
|                       | WP128        | WP129    | WP230    |
| SIZE (mm)             | 32           | 40       | 50       |
| COLOUR                | White        | White    | White    |
| WEIGHT (KG)           | 0.07         | 0.09     | 0.19     |
| DIMENSIONS (mm) A x B | 120 x 65     | 130 x 75 | 174 x 85 |

400MM PIPE

WP101C | WP102C



■ High quality mirror chrome finish

|             | PRODUCT CODE |        |
|-------------|--------------|--------|
|             | WP101C       | WP102C |
| SIZE (mm)   | 32           | 40     |
| COLOUR      | Chrome       | Chrome |
| WEIGHT (KG) | 0.09         | 0.12   |

1.1M PIPE

WP105C | WP106C

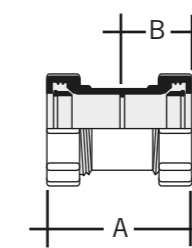


■ High quality mirror chrome finish

|             | PRODUCT CODE |        |
|-------------|--------------|--------|
|             | WP105C       | WP106C |
| SIZE (mm)   | 32           | 40     |
| COLOUR      | Chrome       | Chrome |
| WEIGHT (KG) | 0.25         | 0.32   |

STRAIGHT COUPLING

WP114C | WP115C



■ High quality mirror chrome finish

|                       | PRODUCT CODE |         |
|-----------------------|--------------|---------|
|                       | WP114C       | WP115C  |
| SIZE (mm)             | 32           | 40      |
| COLOUR                | Chrome       | Chrome  |
| WEIGHT (KG)           | 0.04         | 0.05    |
| DIMENSIONS (mm) A x B | 70 x 35      | 78 x 39 |



REASONS TO TRUST MULTIKWIK

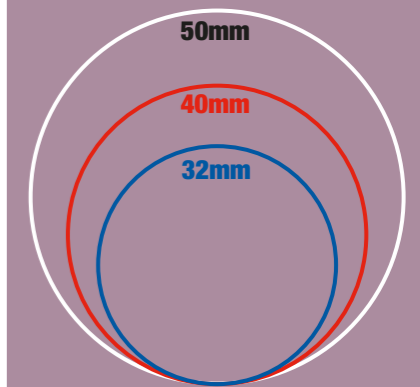
White and chrome colour options

The compression waste range is available in a white and chrome finish in 32mm, 40mm and 50mm options.



Slip ring colours

To save time on site all Multikwik compression fittings have unique slip ring colours to aid size identification.



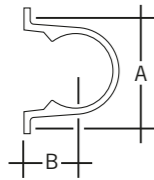
TRUST MULTIKWIK

Our fittings have smooth and clean internal surfaces and have been designed so they do not require an internal pipe locating sleeve, reducing the chances of blockages.

COMPRESSION WASTE

PIPE CLIP

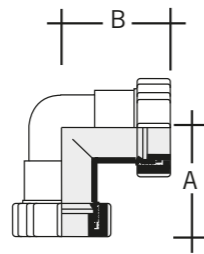
WP141C | WP142C



- High quality mirror chrome finish
- Sold in packs of 3

90° BEND

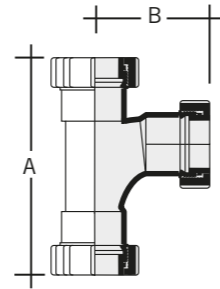
WP120C | WP121C



- High quality mirror chrome finish

92.5° TEE

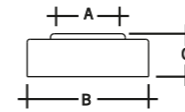
WP129C



- High quality mirror chrome finish

PIPE COVER

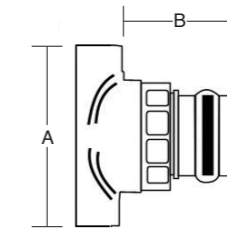
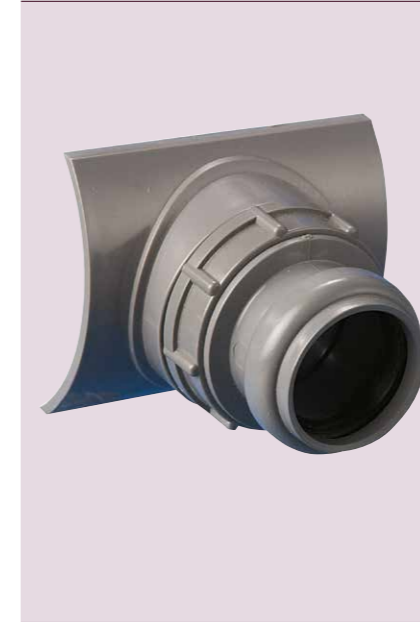
WP153C | WP154C



- High quality mirror chrome finish

EASY BOSS

MKEB4032G | MKEB4032B



- Fits 32mm and 40mm push-fit and solvent waste pipes
- For connection (push fit or solvent weld) to 110mm soil stacks



REASONS TO TRUST MULTIKWIK

How to make a simple boss connection...



Drill 57mm hole



Ensure seal is in position



Insert Easy Boss into the hole



Twist in the Easy Boss connector



Use a strap wrench and hand tighten



Insert the pipe

|                           | PRODUCT CODE |         |
|---------------------------|--------------|---------|
|                           | WP141C       | WP142C  |
| SIZE (mm)                 | 32           | 40      |
| COLOUR                    | Chrome       | Chrome  |
| WEIGHT (KG)               | 0.01         | 0.02    |
| DIMENSIONS (mm) A x B x C | 76 x 30      | 82 x 30 |

|                       | PRODUCT CODE |         |
|-----------------------|--------------|---------|
|                       | WP120C       | WP121C  |
| SIZE (mm)             | 32           | 40      |
| COLOUR                | Chrome       | Chrome  |
| WEIGHT (KG)           | 0.05         | 0.06    |
| DIMENSIONS (mm) A x B | 55 x 55      | 60 x 60 |

|                       | PRODUCT CODE |
|-----------------------|--------------|
|                       | WP129C       |
| SIZE (mm)             | 40           |
| COLOUR                | Chrome       |
| WEIGHT (KG)           | 0.09         |
| DIMENSIONS (mm) A x B | 130 x 75     |

|                           | PRODUCT CODE |              |
|---------------------------|--------------|--------------|
|                           | WP153C       | WP154C       |
| SIZE (mm)                 | 32           | 40           |
| COLOUR                    | Chrome       | Chrome       |
| WEIGHT (KG)               | 0.03         | 0.04         |
| DIMENSIONS (mm) A x B x C | 38 x 65 x 19 | 40 x 65 x 23 |

|                       | PRODUCT CODE |           |
|-----------------------|--------------|-----------|
|                       | MKEB4032G    | MKEB4032B |
| SIZE (mm)             | 110          | 110       |
| COLOUR                | Grey         | Black     |
| WEIGHT (KG)           | 0.20         | 0.20      |
| DIMENSIONS (mm) A x B | 105 x 65     | 105 x 65  |

TRUST MULTIKWIK

The Multikwik Easy Boss is tested to a 5m head of water, providing a reliable connection from push fit and solvent waste pipes to a standard 110mm soil stack and can be installed anywhere in a run.

# Multikwik® WC CONNECTORS

FLEXIBILITY YOU CAN **TRUST**

At Multikwik we take great pride in plumbing and offer innovative products that are capable of giving you that little bit of extra help.

That's why 50 years ago we pioneered with a flexible WC connector, which replaced the cemented joint previously used, that caused problems with sealing and cracking during building settlement, which could lead to leaks.

Thanks to the flexible EVA and reliable TPE seals, the Multikwik WC connectors allow for imperfect pipes and spigots, while still ensuring a watertight joint past the point of installation – ideal for tolerating movement and WC load bearing pressures. The seals and multi-depth fins give additional peace of mind over time.

**Over the years, we have improved and extended the range of WC connectors, and to this date we are proud to say that we are still trusted by plumbers, by being the first choice for WC connectors.**

## WC Connectors

Our comprehensive range is one of the largest on the market, and covers spigots of 74mm – 114mm, ensuring an accurate fit, regardless of the make and model of sanitary chinaware.

### Selecting the right WC connector

Measure the  
OUTER diameter  
of your spigot.



Measure the  
INNER diameter  
of your pipe.



Then take a look at the  
dimensions provided for  
the individual connectors  
to find the best matches.

### Know your WC pan spigot

| KEY                | SIZE       | PIPE SUITABILITY     | BRITISH STANDARD  |
|--------------------|------------|----------------------|-------------------|
| <b>PAGE: 80-90</b> | 97-108 mm  | Modern & New Pans    | BS 5503 & BS 5504 |
| <b>PAGE: 91-93</b> | 108-114 mm | Old & Syphonic Pans  | BS 1213           |
| <b>PAGE: 94-95</b> | 76-95 mm   | Stainless Steel Pans | —                 |

### Know your pipe

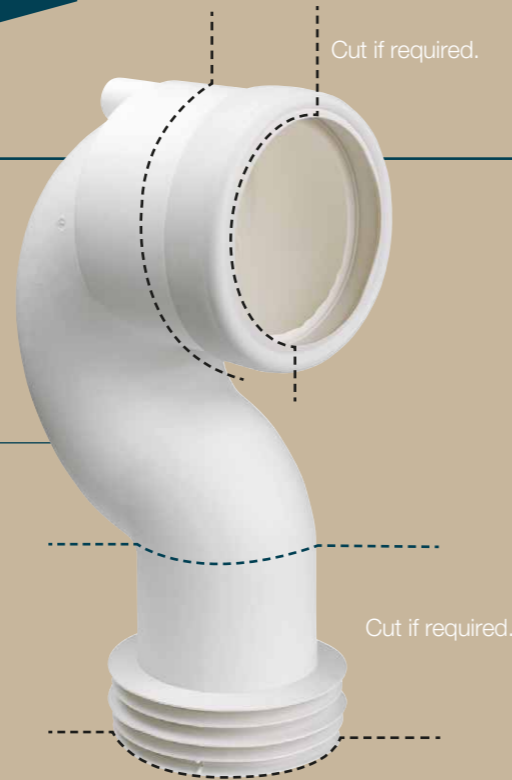
| KEY                | SIZE       | PIPE SUITABILITY        | BRITISH STANDARD                 |
|--------------------|------------|-------------------------|----------------------------------|
| <b>STANDARD ①</b>  | 99-105 mm  | uPVC / Clay / Cast Iron | BS 4514/BS 4660/<br>BS 65/BS 416 |
| <b>CAST IRON ②</b> | 88-92 mm   | Traditional Cast Iron   | —                                |
| <b>OLD ③</b>       | 74-77 mm   | —                       | —                                |
| <b>COPPER ④</b>    | 105-108 mm | Copper                  | —                                |

All WC connectors are made to fit pans conforming to BS 5503 and BS 5504, including ones with bosses.

**PROBLEM SOLVED**

**90° space saver bend**  
MKBAR90

- Can be cut horizontally and vertically to suit, seals slide back on once cut
- Ideal for replacing old BS1213 'S' trap pans



**PROBLEM SOLVED**

**Flexible WC connector**  
MKF330

- Flexible for difficult installations
- 500mm overall length



**PROBLEM SOLVED**

**Multilink**  
MKL1

- Sleeves the fins of all 99 – 105mm Multikwik WC connector outlets, allowing a direct connection to another WC connector
- Ideal for the most unusual installations



**PROBLEM SOLVED**

**Multiclik flexible straight WC connector**  
MKC2

- Extends from 225 to 550mm
- Superior quality hose
- Retains its position whatever shape is required
- Ideal for installing back to the wall, floor standing pans



**PROBLEM SOLVED**

**90° bend flexible WC connector**  
MKC2B90

- Extends from 375 to 710mm
- Converts a 'P' trap into an 'S' trap with adjustment for final connection
- Superior quality hose
- Retains its position whatever shape is required



**PROBLEM SOLVED**

**90° bend flexible WC connector with boss**  
MKC2BB90

- Extends from 405 to 740mm
- Converts a 'P' trap into an 'S' trap with adjustment for final connection
- Superior quality hose
- Retains its position whatever shape is required



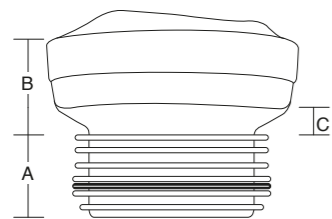
WC CONNECTORS / MODERN

PIPE 1: Standard 99-105mm 2: Cast Iron 88-92mm 3: Old 74-77mm 4: Copper 105-108mm:

STRAIGHT

MKS2

1

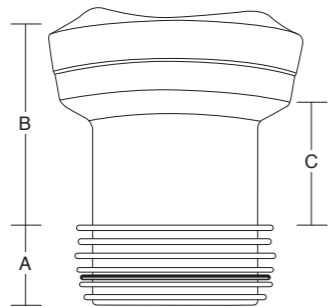


- Known as the No.2 – the plumbers favourite
- This connector is for new style pans only

EXTENDED STRAIGHT

MKS4

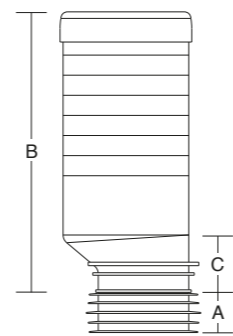
1



LONG ADJUSTABLE STRAIGHT

MKLA1

1

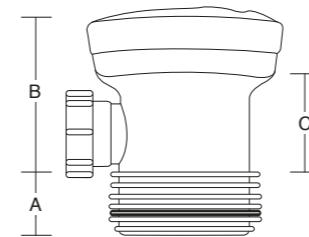


- Can be cut to suit
- This connector is for new style pans only

STRAIGHT – INCL. VENT BOSS

MKSB4

1

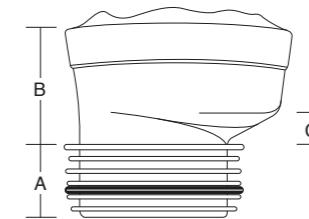


- 40mm vent boss

18MM OFFSET

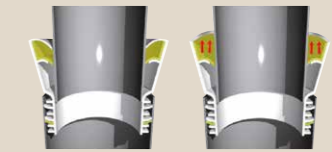
MKO2

1



REASONS TO TRUST MULTIKWIK

Sealing flanges



When connecting a WC connector to the pan spigot, the sealing flanges must be pushed inside with the pipe.

Don't pull the other sealing flange out over the top of the pan spigot – it may lead to leaks.



MKS1 vs MKS2

It's easy to get it right! When you install a new toilet, in a new build development, you should use a MKS2 WC connector. When you refurbish an old toilet, you need to use a MKS1 WC connector (see page 17).

Use MKS1 on an installation, where it's been DONE!

Use MKS2 on an installation, where it's all NEW!

TRUST MULTIKWIK

Since its inception Multikwik has revolutionised plumbing in the UK. It was one of the first companies to support the use of plastics in plumbing. The innovative EVA WC connectors first introduced to the UK by Multikwik provided plumbers with a solution to a long standing plumbing problem.

|                                | PRODUCT CODE |
|--------------------------------|--------------|
|                                | MKS2         |
| PAN SPIGOT OUTER DIAMETER (mm) | 97 – 108     |
| SOIL PIPE INNER DIAMETER (mm)  | 99 – 105     |
| WEIGHT (KG)                    | 0.16         |
| DIMENSIONS (mm) A x B x C      | 43 x 52 x 15 |

|                                | PRODUCT CODE  |
|--------------------------------|---------------|
|                                | MKS4          |
| PAN SPIGOT OUTER DIAMETER (mm) | 97 – 108      |
| SOIL PIPE INNER DIAMETER (mm)  | 99 – 105      |
| WEIGHT (KG)                    | 0.19          |
| DIMENSIONS (mm) A x B x C      | 43 x 105 x 70 |

|                                | PRODUCT CODE   |
|--------------------------------|----------------|
|                                | MKLA1          |
| PAN SPIGOT OUTER DIAMETER (mm) | 97 – 108       |
| SOIL PIPE INNER DIAMETER (mm)  | 99 – 105       |
| WEIGHT (KG)                    | 0.46           |
| DIMENSIONS (mm) A x B x C      | 40 x 285 x 255 |

|                                | PRODUCT CODE  |
|--------------------------------|---------------|
|                                | MKSB4         |
| PAN SPIGOT OUTER DIAMETER (mm) | 97 – 108      |
| SOIL PIPE INNER DIAMETER (mm)  | 99 – 105      |
| WEIGHT (KG)                    | 0.22          |
| DIMENSIONS (mm) A x B x C      | 42 x 104 x 70 |

|                                | PRODUCT CODE |
|--------------------------------|--------------|
|                                | MKO2         |
| PAN SPIGOT OUTER DIAMETER (mm) | 97 – 108     |
| SOIL PIPE INNER DIAMETER (mm)  | 99 – 105     |
| WEIGHT (KG)                    | 0.17         |
| DIMENSIONS (mm) A x B x C      | 45 x 70 x 20 |

WC CONNECTORS / MODERN

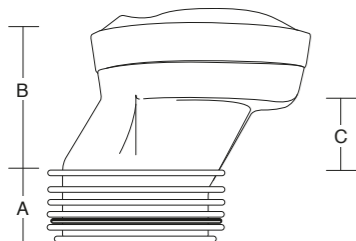
KEY: Adjustable

PIPE 1: Standard 99-105mm 2: Cast Iron 88-92mm 3: Old 74-77mm 4: Copper 105-108mm:

40MM OFFSET

MK04

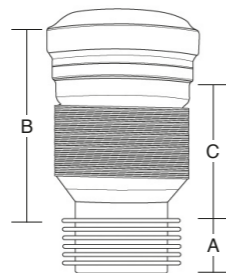
1



MULTICLIK – FLEXIBLE STRAIGHT

MKC2

1

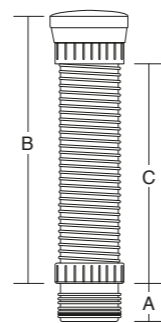


- Extends from 225 to 550mm
- Superior quality hose retains its position whatever shape is required
- Ideal when installing back to the wall, floor standing pans

FLEXIBLE CONNECTOR

MKF330

1

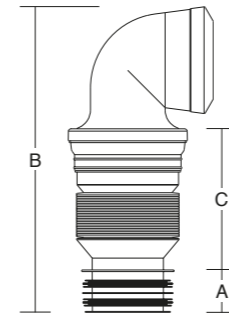


- 500mm overall length
- For difficult installations

MULTICLIK 90° BEND

MKC2B90

1

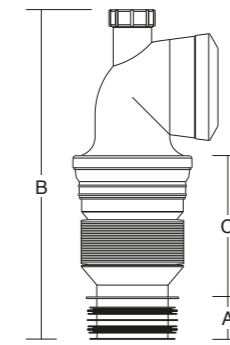


- Extends from 375 to 710mm
- Superior quality hose retains its position whatever shape is required
- Converts a 'P' trap into an 'S' trap with adjustment for final connection.

MULTICLIK 90° BEND INCL. BOSS

MKC2BB90

1



- Extends from 405 to 740mm
- Superior quality hose retains its position whatever shape is required
- Converts a 'P' trap into an 'S' trap with adjustment for final connection
- To be installed in a vertical position

REASONS TO TRUST MULTIKWIK

Multiclik connector



Retains its position whatever shape is required.

Extends from 225 to 550mm.

Flexible ends for excellent joint quality.

|                                | PRODUCT CODE |
|--------------------------------|--------------|
|                                | MK04         |
| PAN SPIGOT OUTER DIAMETER (mm) | 97 – 108     |
| SOIL PIPE INNER DIAMETER (mm)  | 99 – 105     |
| WEIGHT (KG)                    | 0.19         |
| DIMENSIONS (mm) A x B x C      | 43 x 85 x 43 |

|                                | PRODUCT CODE   |
|--------------------------------|----------------|
|                                | MKC2           |
| PAN SPIGOT OUTER DIAMETER (mm) | 97 – 108       |
| SOIL PIPE INNER DIAMETER (mm)  | 99 – 105       |
| WEIGHT (KG)                    | 0.37           |
| DIMENSIONS (mm) A x B x C      | 50 x 170 x 120 |

|                                | PRODUCT CODE   |
|--------------------------------|----------------|
|                                | MKF330         |
| PAN SPIGOT OUTER DIAMETER (mm) | 97 – 108       |
| SOIL PIPE INNER DIAMETER (mm)  | 99 – 105       |
| WEIGHT (KG)                    | 0.61           |
| DIMENSIONS (mm) A x B x C      | 50 x 450 x 363 |

|                                | PRODUCT CODE   |
|--------------------------------|----------------|
|                                | MKC2B90        |
| PAN SPIGOT OUTER DIAMETER (mm) | 97 – 108       |
| SOIL PIPE INNER DIAMETER (mm)  | 99 – 105       |
| WEIGHT (KG)                    | 0.57           |
| DIMENSIONS (mm) A x B x C      | 50 x 270 x 110 |

|                                | PRODUCT CODE   |
|--------------------------------|----------------|
|                                | MKC2BB90       |
| PAN SPIGOT OUTER DIAMETER (mm) | 97 – 108       |
| SOIL PIPE INNER DIAMETER (mm)  | 99 – 105       |
| WEIGHT (KG)                    | 0.59           |
| DIMENSIONS (mm) A x B x C      | 50 x 265 x 105 |

TRUST MULTIKWIK

All Multikwik fins have been designed to be multi depth – to give tolerance on connection to pipe – ensuring a reliable connection to all pipe sizes and materials.





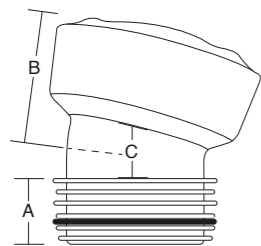
WC CONNECTORS / MODERN

PIPE 1: Standard 99-105mm 2: Cast Iron 88-92mm 3: Old 74-77mm 4: Copper 105-108mm:

14° BEND

MKB114

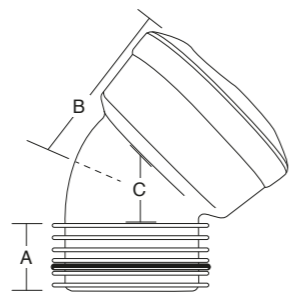
1



45° BEND

MKB45

1

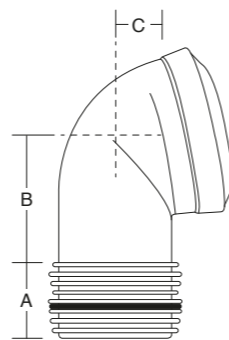


■ Ideal for corner installations

104° BEND

MKB21104

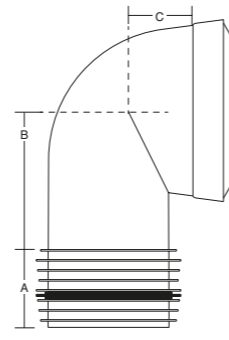
1



90° BEND

MKB2190

1



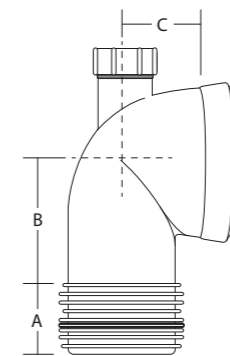
90° BEND – INCL. VENT BOSS

MKBB2190

1



- 40mm vent boss
- Must be used in a vertical position if boss is being used.



REASONS TO TRUST MULTIKWIK

Make sure you know your pans and spigots

Pan dimensions

- 97 – 108mm Modern Pans
- 108 – 114mm Old Pans
- 76 – 96mm Stainless Steel

Spigot sizes

- 99 – 105mm Standard
- 88 – 92mm Cast Iron
- 74 – 77mm Old
- 105 – 108mm Copper

**Multilink**  
Multilink is a unique fitting which sleeves the fins of all 99 – 105mm outlet Multikwik pan connectors. Enabling direct connection to be made to the inlet of another pan connector.



See page 97 for Multilink.

TRUST MULTIKWIK

Don't worry if your pipe or spigot aren't true – Multikwik WC connectors are made from EVA and are designed to be flexible.

|                                | PRODUCT CODE |
|--------------------------------|--------------|
|                                | MKB114       |
| PAN SPIGOT OUTER DIAMETER (mm) | 97 – 108     |
| SOIL PIPE INNER DIAMETER (mm)  | 99 – 105     |
| WEIGHT (KG)                    | 0.19         |
| DIMENSIONS (mm) A x B x C      | 43 x 80 x 30 |

|                                | PRODUCT CODE  |
|--------------------------------|---------------|
|                                | MKB45         |
| PAN SPIGOT OUTER DIAMETER (mm) | 97 – 108      |
| SOIL PIPE INNER DIAMETER (mm)  | 99 – 105      |
| WEIGHT (KG)                    | 0.19          |
| DIMENSIONS (mm) A x B x C      | 43 x 100 x 60 |

|                                | PRODUCT CODE  |
|--------------------------------|---------------|
|                                | MKB21104      |
| PAN SPIGOT OUTER DIAMETER (mm) | 97 – 108      |
| SOIL PIPE INNER DIAMETER (mm)  | 99 – 105      |
| WEIGHT (KG)                    | 0.24          |
| DIMENSIONS (mm) A x B x C      | 60 x 110 x 34 |

|                                | PRODUCT CODE  |
|--------------------------------|---------------|
|                                | MKB2190       |
| PAN SPIGOT OUTER DIAMETER (mm) | 97 – 108      |
| SOIL PIPE INNER DIAMETER (mm)  | 99 – 105      |
| WEIGHT (KG)                    | 0.30          |
| DIMENSIONS (mm) A x B x C      | 60 x 115 x 80 |

|                                | PRODUCT CODE  |
|--------------------------------|---------------|
|                                | MKBB2190      |
| PAN SPIGOT OUTER DIAMETER (mm) | 97 – 108      |
| SOIL PIPE INNER DIAMETER (mm)  | 99 – 105      |
| WEIGHT (KG)                    | 0.31          |
| DIMENSIONS (mm) A x B x C      | 60 x 110 x 65 |

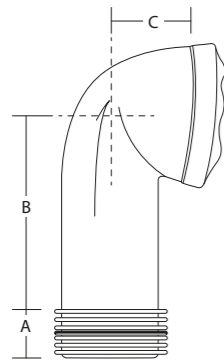
WC CONNECTORS / MODERN

PIPE 1: Standard 99-105mm 2: Cast Iron 88-92mm 3: Old 74-77mm 4: Copper 105-108mm:

90° BEND – TALL

MKB3190

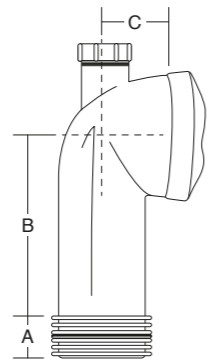
1



90° BEND – INCL. BOSS

MKBB3190

1

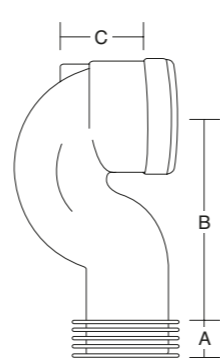


- Includes 40mm compression boss
- Must be used in a vertical position if boss is being used

90° SPACE SAVER BEND

MKBAR90

1

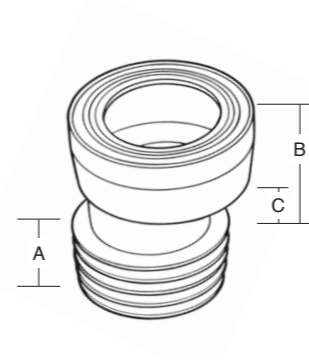


- Ideal when replacing old BS1213 'S' trap pans
- Can be cut to suit both horizontally and vertically

RIGID 18MM OFFSET

MKRO2

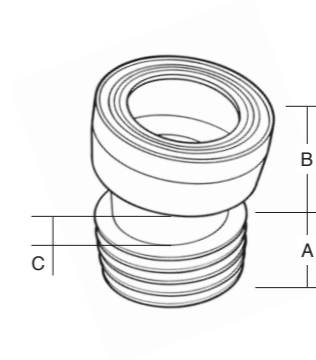
1



RIGID 14° BEND

MKRB14

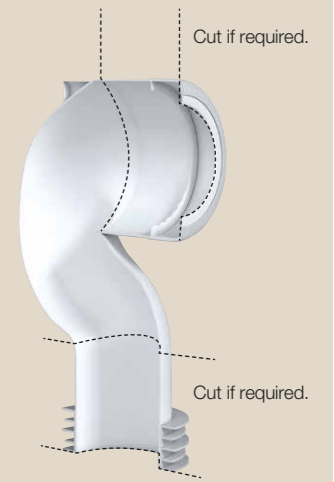
1



REASONS TO TRUST MULTIKWIK

Space Saver Bend

Can be cut to suit both horizontally and vertically.



Soil Pipe Extensions

Available for 4", 3 1/2" and 3" a Multikwik Soil Pipe Extension can be cut to required length, removing the unsightly existing pipe within the bathroom.



See page 96 for Pipe Extensions.

TRUST MULTIKWIK

British Standards state that a solid ball of 80mm must pass through pipework unaided. All Multikwik WC connectors including those with boss upstands meet this requirement, reducing the chance of blockage and expensive remedial costs.

|                                | PRODUCT CODE<br>MKB3190 |
|--------------------------------|-------------------------|
| PAN SPIGOT OUTER DIAMETER (mm) | 97 – 108                |
| SOIL PIPE INNER DIAMETER (mm)  | 99 – 105                |
| WEIGHT (KG)                    | 0.36                    |
| DIMENSIONS (mm) A x B x C      | 43 x 200 x 90           |

|                                | PRODUCT CODE<br>MKBB3190 |
|--------------------------------|--------------------------|
| PAN SPIGOT OUTER DIAMETER (mm) | 97 – 108                 |
| SOIL PIPE INNER DIAMETER (mm)  | 99 – 105                 |
| WEIGHT (KG)                    | 0.35                     |
| DIMENSIONS (mm) A x B x C      | 43 x 200 x 70            |

|                                | PRODUCT CODE<br>MKBAR90 |
|--------------------------------|-------------------------|
| PAN SPIGOT OUTER DIAMETER (mm) | 97 – 108                |
| SOIL PIPE INNER DIAMETER (mm)  | 99 – 105                |
| WEIGHT (KG)                    | 0.38                    |
| DIMENSIONS (mm) A x B x C      | 34 x 255 x 91           |

|                                | PRODUCT CODE<br>MKRO2 |
|--------------------------------|-----------------------|
| PAN SPIGOT OUTER DIAMETER (mm) | 97 – 108              |
| SOIL PIPE INNER DIAMETER (mm)  | 99 – 105              |
| WEIGHT (KG)                    | 0.20                  |
| DIMENSIONS (mm) A x B x C      | 35 x 80 x 35          |

|                                | PRODUCT CODE<br>MKRB14 |
|--------------------------------|------------------------|
| PAN SPIGOT OUTER DIAMETER (mm) | 97 – 108               |
| SOIL PIPE INNER DIAMETER (mm)  | 99 – 105               |
| WEIGHT (KG)                    | 0.20                   |
| DIMENSIONS (mm) A x B x C      | 40 x 105 x 40          |

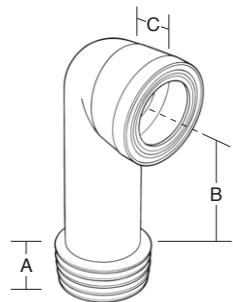
WC CONNECTORS / MODERN

PIPE 1: Standard 99-105mm 2: Cast Iron 88-92mm 3: Old 74-77mm 4: Copper 105-108mm:

RIGID 90° BEND

MKRB90

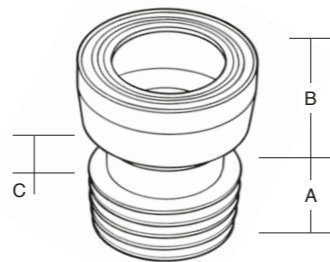
1



RIGID STRAIGHT

MKRS2

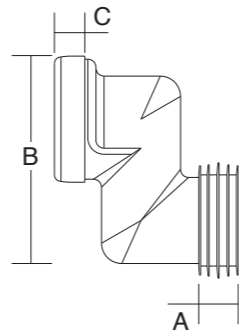
1



RIGID 100MM OFFSET

MKO100

1

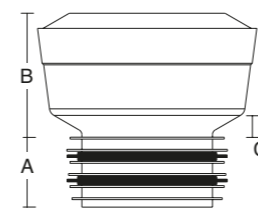


Adjustable length: remove the fined seal and cut with a fine tooth saw

EXTENDED STRAIGHT FOR 3/2" SOIL

MKS7

2

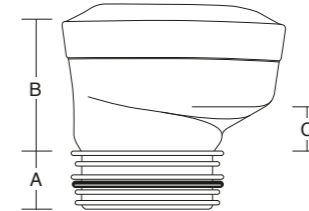


Extension length: 15mm

18MM OFFSET FOR 3/2" SOIL

MK07

2



**REASONS TO TRUST MULTIKWIK**

**SEALING FLANGES**

When connecting a WC connector to the pan spigot, the sealing flanges must be pushed inside with the pipe.

✓

Don't pull the other sealing flange out over the top of the pan spigot – it may lead to leaks.

✗

|                                | PRODUCT CODE  |
|--------------------------------|---------------|
|                                | MKRB90        |
| PAN SPIGOT OUTER DIAMETER (mm) | 97 – 108      |
| SOIL PIPE INNER DIAMETER (mm)  | 99 – 105      |
| WEIGHT (KG)                    | 0.33          |
| DIMENSIONS (mm) A x B x C      | 37 x 210 x 50 |

|                                | PRODUCT CODE |
|--------------------------------|--------------|
|                                | MKRS2        |
| PAN SPIGOT OUTER DIAMETER (mm) | 97 – 108     |
| SOIL PIPE INNER DIAMETER (mm)  | 99 – 105     |
| WEIGHT (KG)                    | 0.20         |
| DIMENSIONS (mm) A x B x C      | 37 x 75 x 30 |

|                                | PRODUCT CODE  |
|--------------------------------|---------------|
|                                | MKO100        |
| PAN SPIGOT OUTER DIAMETER (mm) | 97 – 108      |
| SOIL PIPE INNER DIAMETER (mm)  | 99 – 105      |
| WEIGHT (KG)                    | 0.26          |
| DIMENSIONS (mm) A x B x C      | 40 x 207 x 26 |

|                                | PRODUCT CODE |
|--------------------------------|--------------|
|                                | MKS7         |
| PAN SPIGOT OUTER DIAMETER (mm) | 97 – 108     |
| SOIL PIPE INNER DIAMETER (mm)  | 88 – 92      |
| WEIGHT (KG)                    | 0.17         |
| DIMENSIONS (mm) A x B x C      | 41 x 70 x 15 |

|                                | PRODUCT CODE |
|--------------------------------|--------------|
|                                | MK07         |
| PAN SPIGOT OUTER DIAMETER (mm) | 97 – 108     |
| SOIL PIPE INNER DIAMETER (mm)  | 88 – 92      |
| WEIGHT (KG)                    | 0.15         |
| DIMENSIONS (mm) A x B x C      | 34 x 77 x 30 |

**TRUST MULTIKWIK**

Our Technical team can help you with any questions you may have – just give us a call on 01622 852 695 or send us an email to [info@multikwik.com](mailto:info@multikwik.com). You can even tweet your question to @multikwik.

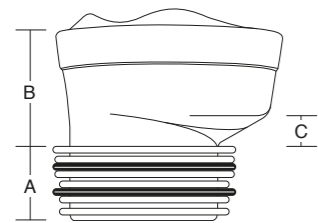
WC CONNECTORS / MODERN

OLD PIPE 1: Standard 99-105mm 2: Cast Iron 88-92mm 3: Old 74-77mm 4: Copper 105-108mm: 12mm 3: Old 74-77mm 4: Copper 105-108mm:

18MM OFFSET  
OLD BS1213 PANS TO  
OVERSIZE SOIL

MKO1S

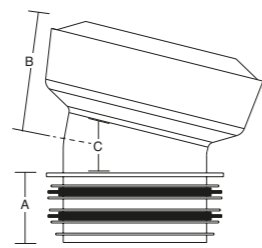
4



14° BEND  
FOR OVERSIZE SOIL

MKB114S

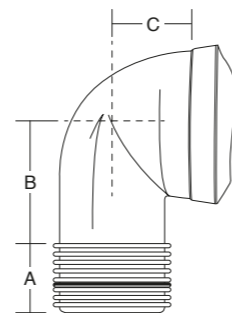
4



90° BEND  
FOR OVERSIZE SOIL

MKB2190S

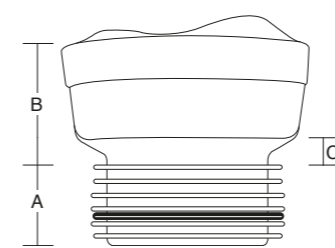
4



STRAIGHT

MKS1

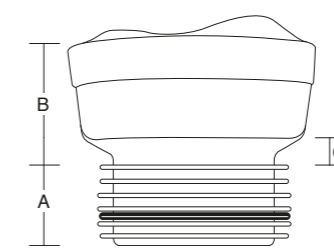
1



STRAIGHT  
OLD BS1213 SYPHONIC PANS

MKS1A

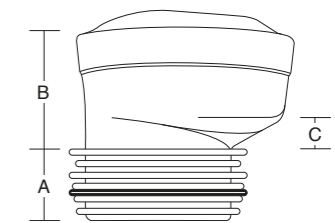
1



18MM OFFSET  
OLD BS1213 PANS

MKO1

1



- Known as the No.1 – the plumbers favourite
- This connector is for old style pans only – for new pans use an MKS2 (see page 80)

|                                | PRODUCT CODE |
|--------------------------------|--------------|
|                                | MKO1S        |
| PAN SPIGOT OUTER DIAMETER (mm) | 97 – 108     |
| SOIL PIPE INNER DIAMETER (mm)  | 105 – 108    |
| WEIGHT (KG)                    | 0.18         |
| DIMENSIONS (mm) A x B x C      | 45 x 76 x 20 |

|                                | PRODUCT CODE |
|--------------------------------|--------------|
|                                | MKB114S      |
| PAN SPIGOT OUTER DIAMETER (mm) | 97 – 108     |
| SOIL PIPE INNER DIAMETER (mm)  | 105 – 108    |
| WEIGHT (KG)                    | 0.20         |
| DIMENSIONS (mm) A x B x C      | 43 x 80 x 35 |

|                                | PRODUCT CODE  |
|--------------------------------|---------------|
|                                | MKB2190S      |
| PAN SPIGOT OUTER DIAMETER (mm) | 97 – 108      |
| SOIL PIPE INNER DIAMETER (mm)  | 105 – 108     |
| WEIGHT (KG)                    | 0.32          |
| DIMENSIONS (mm) A x B x C      | 60 x 115 x 80 |

|                                | PRODUCT CODE |
|--------------------------------|--------------|
|                                | MKS1         |
| PAN SPIGOT OUTER DIAMETER (mm) | 108 – 114    |
| SOIL PIPE INNER DIAMETER (mm)  | 99 – 105     |
| WEIGHT (KG)                    | 0.16         |
| DIMENSIONS (mm) A x B x C      | 44 x 67 x 15 |

|                                | PRODUCT CODE |
|--------------------------------|--------------|
|                                | MKS1A        |
| PAN SPIGOT OUTER DIAMETER (mm) | 108 – 114    |
| SOIL PIPE INNER DIAMETER (mm)  | 99 – 105     |
| WEIGHT (KG)                    | 0.17         |
| DIMENSIONS (mm) A x B x C      | 40 x 70 x 15 |

|                                | PRODUCT CODE |
|--------------------------------|--------------|
|                                | MKO1         |
| PAN SPIGOT OUTER DIAMETER (mm) | 108 – 114    |
| SOIL PIPE INNER DIAMETER (mm)  | 99 – 105     |
| WEIGHT (KG)                    | 0.17         |
| DIMENSIONS (mm) A x B x C      | 45 x 70 x 25 |

WC CONNECTORS / OLD

PIPE 1: Standard 99-105mm 2: Cast Iron 88-92mm 3: Old 74-77mm 4: Copper 105-108mm:

90° TIGHT  
KNUCKLE BEND  
OLD BS1213 PANS

MKB21

1

90° TIGHT  
KNUCKLE BEND  
OLD BS1213 PANS

MKB22

1

STRAIGHT  
3½" SOIL

MKS3

18MM OFFSET  
OLD BS1213 PANS TO 3½" SOIL

2

MK03

2

90° TIGHT  
KNUCKLE BEND  
OLD BS1213 PANS TO OVERSIZE SOIL

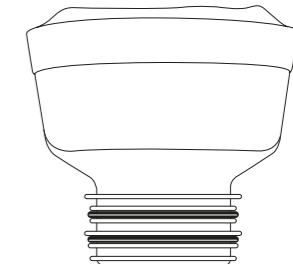
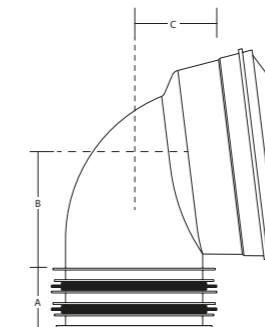
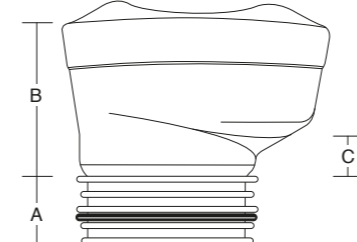
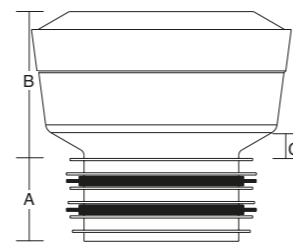
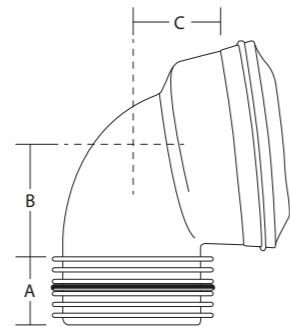
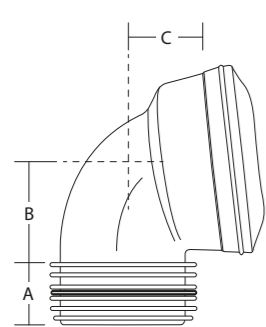
MKB21S

4

STRAIGHT  
3" SOIL

MKS10

3



|                                | PRODUCT CODE |
|--------------------------------|--------------|
|                                | MKB21        |
| PAN SPIGOT OUTER DIAMETER (mm) | 108 – 114    |
| SOIL PIPE INNER DIAMETER (mm)  | 99 – 105     |
| WEIGHT (KG)                    | 0.24         |
| DIMENSIONS (mm) A x B x C      | 45 x 80 x 80 |

|                                | PRODUCT CODE |
|--------------------------------|--------------|
|                                | MKB22        |
| PAN SPIGOT OUTER DIAMETER (mm) | 108 – 114    |
| SOIL PIPE INNER DIAMETER (mm)  | 99 – 105     |
| WEIGHT (KG)                    | 0.24         |
| DIMENSIONS (mm) A x B x C      | 45 x 80 x 75 |

|                                | PRODUCT CODE |
|--------------------------------|--------------|
|                                | MKS3         |
| PAN SPIGOT OUTER DIAMETER (mm) | 108 – 114    |
| SOIL PIPE INNER DIAMETER (mm)  | 88 – 92      |
| WEIGHT (KG)                    | 0.16         |
| DIMENSIONS (mm) A x B x C      | 41 x 70 x 10 |

|                                | PRODUCT CODE |
|--------------------------------|--------------|
|                                | MK03         |
| PAN SPIGOT OUTER DIAMETER (mm) | 108 – 114    |
| SOIL PIPE INNER DIAMETER (mm)  | 88 – 92      |
| WEIGHT (KG)                    | 0.15         |
| DIMENSIONS (mm) A x B x C      | 37 x 78 x 30 |

|                                | PRODUCT CODE |
|--------------------------------|--------------|
|                                | MKB21S       |
| PAN SPIGOT OUTER DIAMETER (mm) | 108 – 114    |
| SOIL PIPE INNER DIAMETER (mm)  | 105 – 108    |
| WEIGHT (KG)                    | 0.25         |
| DIMENSIONS (mm) A x B x C      | 45 x 75 x 60 |

|                                | PRODUCT CODE |
|--------------------------------|--------------|
|                                | MKS10        |
| PAN SPIGOT OUTER DIAMETER (mm) | 108 – 114    |
| SOIL PIPE INNER DIAMETER (mm)  | 74 – 77      |
| WEIGHT (KG)                    | 0.16         |
| DIMENSIONS (mm) A x B x C      | 45 x 75 x 60 |

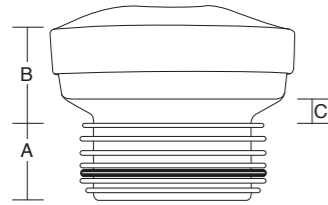
WC CONNECTORS / STAINLESS STEEL

PIPE 1: Standard 99-105mm 2: Cast Iron 88-92mm 3: Old 74-77mm 4: Copper 105-108mm:

STRAIGHT  
UNDERSIZE SPIGOTS

MKS5

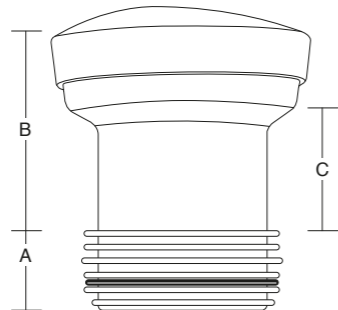
1



EXTENDED STRAIGHT  
UNDERSIZE SPIGOTS

MKS8

1

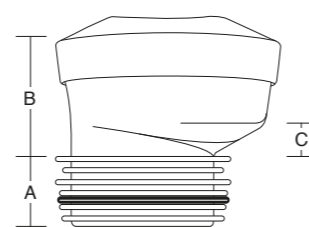


■ Extension length: 59mm

18MM OFFSET  
UNDERSIZE SPIGOTS

MK05

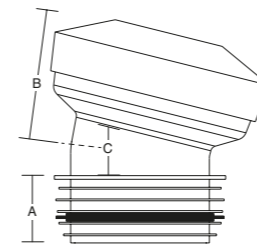
1



14° BEND  
UNDERSIZE SPIGOTS

MKB514

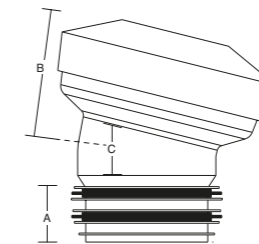
1



14° BEND  
UNDERSIZE SPIGOTS TO 3½" SOIL

MKB614

2



|                                | PRODUCT CODE |
|--------------------------------|--------------|
|                                | MKS5         |
| PAN SPIGOT OUTER DIAMETER (mm) | 76 – 95      |
| SOIL PIPE INNER DIAMETER (mm)  | 99 – 105     |
| WEIGHT (KG)                    | 0.22         |
| DIMENSIONS (mm) A x B x C      | 45 x 55 x 15 |

|                                | PRODUCT CODE  |
|--------------------------------|---------------|
|                                | MKS8          |
| PAN SPIGOT OUTER DIAMETER (mm) | 76 – 95       |
| SOIL PIPE INNER DIAMETER (mm)  | 99 – 105      |
| WEIGHT (KG)                    | 0.26          |
| DIMENSIONS (mm) A x B x C      | 42 x 110 x 70 |

|                                | PRODUCT CODE |
|--------------------------------|--------------|
|                                | MK05         |
| PAN SPIGOT OUTER DIAMETER (mm) | 76 – 95      |
| SOIL PIPE INNER DIAMETER (mm)  | 99 – 105     |
| WEIGHT (KG)                    | 0.24         |
| DIMENSIONS (mm) A x B x C      | 45 x 72 x 22 |

|                                | PRODUCT CODE |
|--------------------------------|--------------|
|                                | MKB514       |
| PAN SPIGOT OUTER DIAMETER (mm) | 76 – 95      |
| SOIL PIPE INNER DIAMETER (mm)  | 99 – 105     |
| WEIGHT (KG)                    | 0.26         |
| DIMENSIONS (mm) A x B x C      | 42 x 85 x 40 |

|                                | PRODUCT CODE |
|--------------------------------|--------------|
|                                | MKB614       |
| PAN SPIGOT OUTER DIAMETER (mm) | 76 – 95      |
| SOIL PIPE INNER DIAMETER (mm)  | 88 – 92      |
| WEIGHT (KG)                    | 0.25         |
| DIMENSIONS (mm) A x B x C      | 37 x 90 x 40 |

REASONS TO TRUST MULTIKWIK

Need an offset?

Measure from the centre line of your pipe to the centre line of your pan spigot.

Remember, offsets should not be installed in an upwards position. Water should be able to run horizontally or down.



TRUST MULTIKWIK

All Multikwik WC connectors are supplied with a sachet of lubricant to ease the installation – with the exception of our adjustable and rigid connectors.

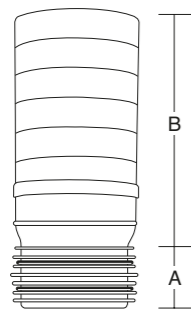


WC CONNECTORS / ANCILLARIES

PIPE 1: Standard 99-105mm 2: Cast Iron 88-92mm 3: Old 74-77mm 4: Copper 105-108mm:

SOIL PIPE EXTENSION FOR 4" SOIL

MKEA 1

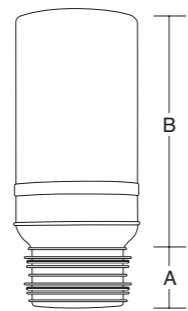


- Can be cut to required length
- Ideal when removing 4" cast iron, clay and PVCu

|                               | PRODUCT CODE |
|-------------------------------|--------------|
|                               | MKEA         |
| SOIL PIPE INNER DIAMETER (mm) | 99 – 105     |
| WEIGHT (KG)                   | 0.24         |
| DIMENSIONS (mm) A x B         | 50 x 202     |

SOIL PIPE EXTENSION FOR 3½" SOIL

MKEB 2

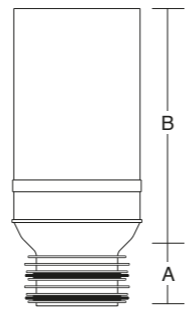


- Can be cut to required length
- Ideal when removing 3½" cast iron

|                               | PRODUCT CODE |
|-------------------------------|--------------|
|                               | MKEB         |
| SOIL PIPE INNER DIAMETER (mm) | 88 – 92      |
| WEIGHT (KG)                   | 0.22         |
| DIMENSIONS (mm) A x B         | 50 x 202     |

SOIL PIPE EXTENSION FOR 3" SOIL

MKEG 3

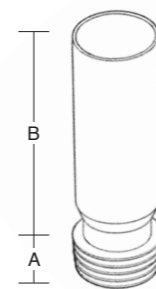


- Can be cut to required length
- Ideal when removing 3" cast iron

|                               | PRODUCT CODE |
|-------------------------------|--------------|
|                               | MKEG         |
| SOIL PIPE INNER DIAMETER (mm) | 74 – 77      |
| WEIGHT (KG)                   | 0.21         |
| DIMENSIONS (mm) A x B         | 42 x 210     |

RIGID SOIL PIPE EXTENSION

MKREXT 1

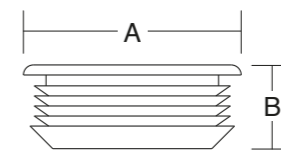


- Adjustable length: remove the fined seal and cut with a fine tooth saw

|                                | PRODUCT CODE |
|--------------------------------|--------------|
|                                | MKREXT       |
| PAN SPIGOT OUTER DIAMETER (mm) | 97 – 108     |
| SOIL PIPE INNER DIAMETER (mm)  | 99 – 105     |
| WEIGHT (KG)                    | 0.23         |
| DIMENSIONS (mm) A x B          | 35 x 264     |

FLUSH PIPE CONNECTOR

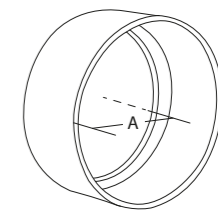
MKFPC1 1



|                               | PRODUCT CODE |
|-------------------------------|--------------|
|                               | MKFPC1       |
| SOIL PIPE INNER DIAMETER (mm) | –            |
| WEIGHT (KG)                   | 0.02         |
| DIMENSIONS (mm) A x B         | 65 x 26      |

MULTILINK

MKL1 1



- For connecting 2 or more pan connectors
- Suitable for sleeving the fins of all 99 – 105mm Multikwik outlets.

|                               | PRODUCT CODE |
|-------------------------------|--------------|
|                               | MKL1         |
| SOIL PIPE INNER DIAMETER (mm) | 99 – 105     |
| WEIGHT (KG)                   | 0.04         |
| DIMENSIONS (mm) A             | 52.5         |



# FLOOR DRAINAGE

## ENDURANCE YOU CAN **TRUST**

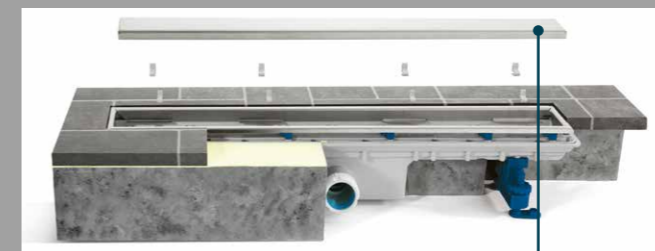
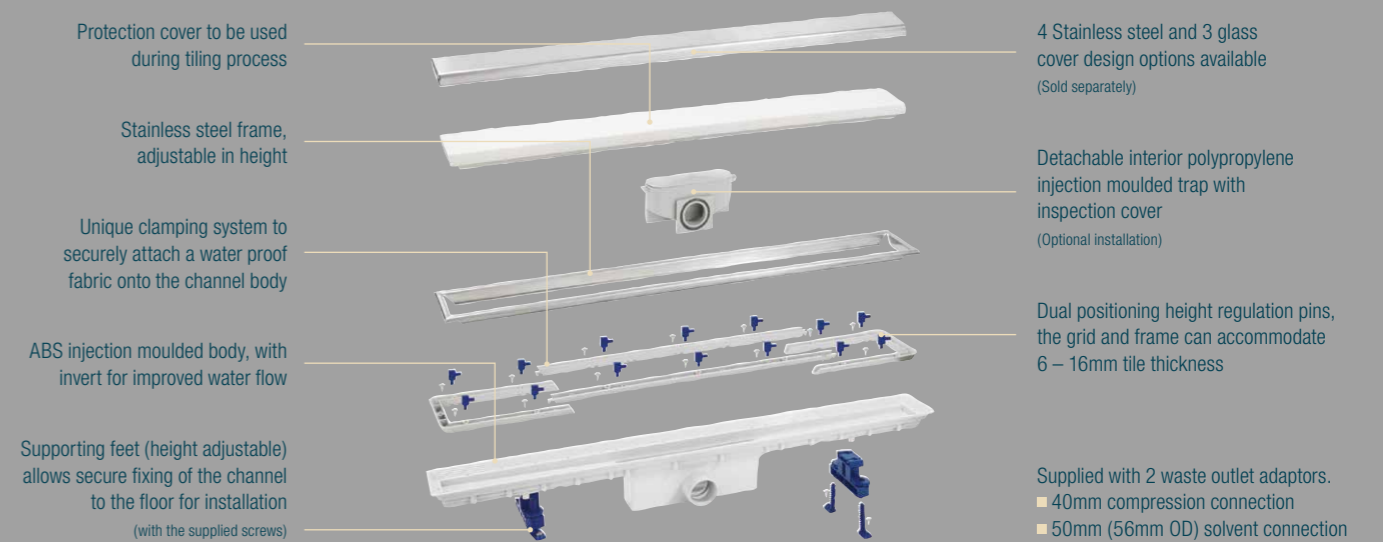
Multikwik floor drainage solutions give you the support that you need to succeed on a tough job.

There is a solution for commercial high flow rate applications, domestic unobtrusive shower drainage, tiled and vinyl flooring.

**Trust Multikwik to give you a choice of floor drainage applications.**

### Multikwik Linnum linear drainage

Linnum offers a high specification linear channel, ideal for wet rooms and shower applications. Available in 3 lengths with an integrated trap, the base unit is compact in width to allow for close to wall installation. The Linnum range includes a wide range of high specification covers and grids and can achieve a flow rate of 0.8 l/s.



One side of the channel provides a smooth finish. Turn the channel over 180° to obtain a 'fill-in' frame – 2 design options from 1 product.



#### The perfect finish

Thanks to the innovative design, Linnum allows for a perfect finish to be achieved with tiles, marble or other types of non-flexible floor covering. The reversible cover system allows for a smooth top finish or a 'fill-in' finish using the same materials (i.e. tiles) as for the rest of the floor, achieving an unobtrusive effect. The soft grid range is supplied with spacer pins to allow water to drain away.

#### A wide choice of styles

Choose from the stainless steel grids or the eye catching glass covers in soft white and kohls black.



## Multikwik Trapped Shower Gullies (vinyl and tiled flooring)

Multikwik has developed a range of compact and adaptable trapped shower gullies for vinyl sheeting and tiled floors that are quick and easy to fit, really versatile, with high performance and great looks when installed. Ideal for care homes, hospitals, leisure facilities, apartment blocks, hotels or private housing.

### Versatile

The range offers various options to meet installation needs, with horizontal and vertical outlets, 50mm or 75mm water seal depth, as well as a 50mm to 40mm size adaptor and different height options for the vertical shower gully.

### Flow rates

The shower gullies are ideal for commercial applications or domestic power showers with flow rates of up to 1.05 l/s.

### Aesthetics

Different grate options are available for both the tiled and vinyl shower gullies, matching any bathroom style.

The dual grate for tiled flooring can also be flipped 180° and filled in with tiles for a truly unobtrusive result.



### PROBLEM SOLVED

## Vertical shower gully with stainless steel or ABS anti-slip

SG50SV | SG50WV

- Unique locking ring feature prevents unintended access, but allows easy access for maintenance
- Stainless steel or ABS anti-slip lid
- Compact size – saving valuable room when space is at a premium



### PROBLEM SOLVED

## Linum channel shower drainage with white glass floor grate

L13560 plus L13564

- Compact, close to wall installation with adjustable overall height and frame height
- Unobtrusive design
- High flow rates

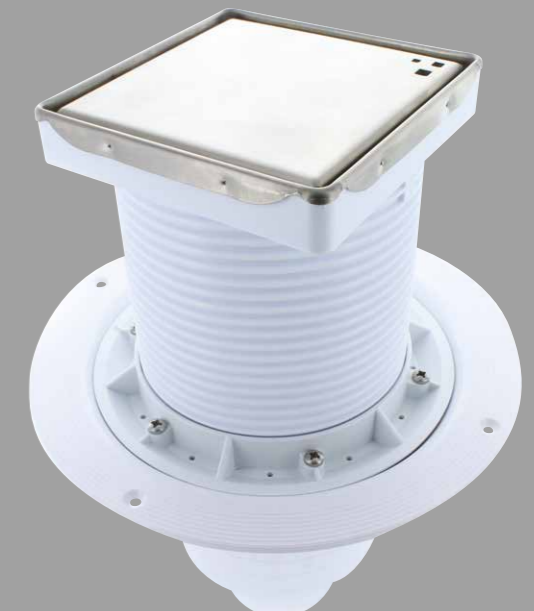


### PROBLEM SOLVED

## Horizontal shower gully body with dual grate & riser set

SG50HT plus SG1T

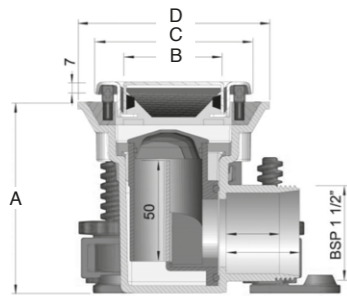
- Mix and match: find suitable shower gully body to match grate design of choice
- Dual grate: Two-in-one by flipping 180° with a choice of smooth stainless steel or tiled fill-in-finish
- Riser can be cut in height to suit different tile and floor thicknesses.



FLOOR DRAINAGE / LINNUM FLOOR DRAINAGE

SHOWER DRAIN BODY

L13560 | L13570 | L13590

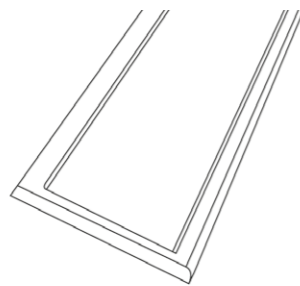


■ Min. height: 115mm; Max. height: 131mm

|                               | PRODUCT CODE        |                     |                     |
|-------------------------------|---------------------|---------------------|---------------------|
|                               | L13560              | L13570              | L13590              |
| SIZE (mm)                     | 650                 | 750                 | 950                 |
| COLOUR                        | Stainless Steel     | Stainless Steel     | Stainless Steel     |
| WATER SEAL DEPTH (mm)         | 50                  | 50                  | 50                  |
| FLOOR TYPE                    | Tiled               | Tiled               | Tiled               |
| WEIGHT (KG)                   | 1.89                | 2.19                | 2.77                |
| DIMENSIONS (mm) A x B x C x D | 95 x 50 x 71 x 95.5 | 95 x 50 x 71 x 95.5 | 95 x 50 x 71 x 95.5 |

GLASS FLOOR GRATE

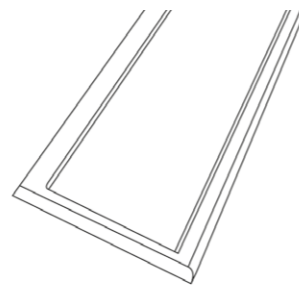
L13563 | L13564



|             | PRODUCT CODE |          |
|-------------|--------------|----------|
|             | L13564       | L13563   |
| SIZE (mm)   | 650 x 50     | 650 x 50 |
| COLOUR      | White        | Black    |
| FLOOR TYPE  | Tiled        | Tiled    |
| WEIGHT (KG) | 0.53         | 0.53     |

SOFT FLOOR GRATE

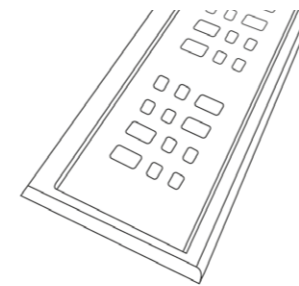
L13565 | L13575 | L13595



|             | PRODUCT CODE    |                 |                 |
|-------------|-----------------|-----------------|-----------------|
|             | L13565          | L13575          | L13595          |
| SIZE (mm)   | 650 x 50        | 750 x 50        | 950 x 50        |
| COLOUR      | Stainless Steel | Stainless Steel | Stainless Steel |
| FLOOR TYPE  | Tiled           | Tiled           | Tiled           |
| WEIGHT (KG) | 0.52            | 0.61            | 0.76            |

ELEGANCE FLOOR GRATE

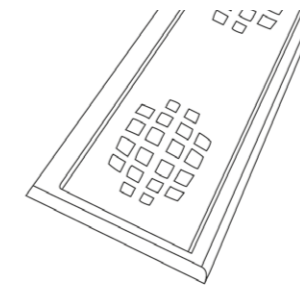
L13566 | L13576 | L13596



|             | PRODUCT CODE    |                 |                 |
|-------------|-----------------|-----------------|-----------------|
|             | L13566          | L13576          | L13596          |
| SIZE (mm)   | 650 x 50        | 750 x 50        | 950 x 50        |
| COLOUR      | Stainless Steel | Stainless Steel | Stainless Steel |
| FLOOR TYPE  | Tiled           | Tiled           | Tiled           |
| WEIGHT (KG) | 0.51            | 0.60            | 0.75            |

SQUARE FLOOR GRATE

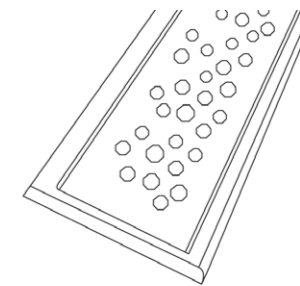
L13567 | L13577 | L13597



|             | PRODUCT CODE    |                 |                 |
|-------------|-----------------|-----------------|-----------------|
|             | L13567          | L13577          | L13597          |
| SIZE (mm)   | 650 x 50        | 750 x 50        | 950 x 50        |
| COLOUR      | Stainless Steel | Stainless Steel | Stainless Steel |
| FLOOR TYPE  | Tiled           | Tiled           | Tiled           |
| WEIGHT (KG) | 0.51            | 0.60            | 0.75            |

BUBBLE FLOOR GRATE

L13569 | L13579 | L13599

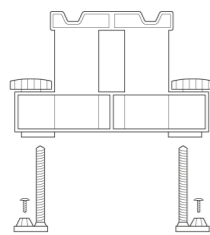


|             | PRODUCT CODE    |                 |                 |
|-------------|-----------------|-----------------|-----------------|
|             | L13569          | L13579          | L13599          |
| SIZE (mm)   | 650 x 50        | 750 x 50        | 950 x 50        |
| COLOUR      | Stainless Steel | Stainless Steel | Stainless Steel |
| FLOOR TYPE  | Tiled           | Tiled           | Tiled           |
| WEIGHT (KG) | 0.51            | 0.60            | 0.75            |

FLOOR DRAINAGE / LINNUM DRAINAGE

CHANNEL SUPPORT SET – SPARE

TRL426



■ Single

|            | PRODUCT CODE  |
|------------|---------------|
|            | <b>TRL426</b> |
| COLOUR     | Red           |
| FLOOR TYPE | Tiled         |

SHOWER GRID FRAME – SPARE

TRL428 | TRL429 | TRL430



|            | PRODUCT CODE    |                 |                 |
|------------|-----------------|-----------------|-----------------|
|            | TRL428          | TRL429          | TRL430          |
| SIZE (mm)  | 650             | 750             | 950             |
| COLOUR     | Stainless Steel | Stainless Steel | Stainless Steel |
| FLOOR TYPE | Tiled           | Tiled           | Tiled           |

SHOWER CLAMPING FRAME – SPARE

TRL434 | TRL435 | TRL436

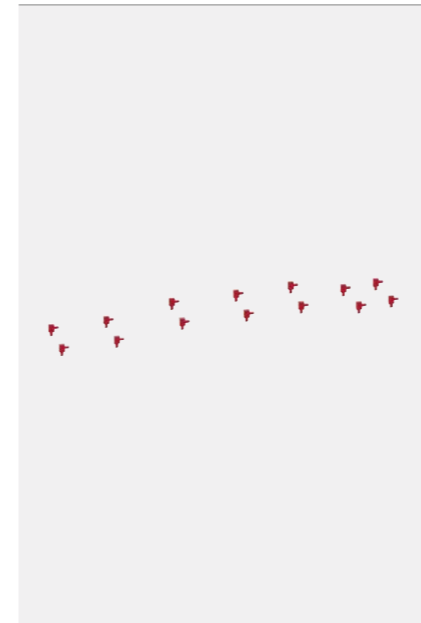


- Plastic
- For use with floor thickness spacer (TRL 478)

|            | PRODUCT CODE    |                 |                 |
|------------|-----------------|-----------------|-----------------|
|            | TRL434          | TRL435          | TRL436          |
| SIZE (mm)  | 650             | 750             | 950             |
| COLOUR     | Stainless Steel | Stainless Steel | Stainless Steel |
| FLOOR TYPE | Tiled           | Tiled           | Tiled           |

FLOOR THICKNESS SPACER SET – SPARE

TRL478



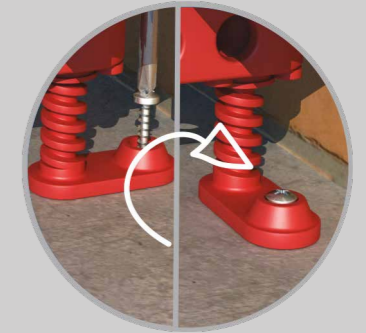
- For use with Linnum shower clamping
- Pack of 12
- Accommodates three different heights

|            | PRODUCT CODE  |
|------------|---------------|
|            | <b>TRL478</b> |
| COLOUR     | Red           |
| FLOOR TYPE | Tiled         |

REASONS TO TRUST MULTIKWIK

Adjustable feet

- Rotatable legs – allows close to wall installation. Moves drainage point to the back of the wall
- Precise height setting by hand adjustment
- Secure installation through clip, for fixing leg height



Compact size

- Compact base unit width enables close to wall installations
- Low minimum height of 95mm with height adjustability to perfectly fit installation requirements
- Length options available for different applications for discrete bathroom finish



Linnum linear channel drainage



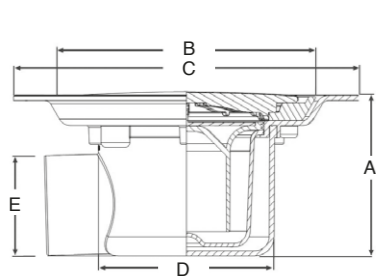
TRUST MULTIKWIK

Linnum offers different glass and stainless steel grates. The Soft floor grate is a two-in-one product: a smooth stainless steel finish or if flipped 180° it can be filled with tiles to match the surrounding tiled floor

FLOOR DRAINAGE / TRAPPED SHOWER GULLY – VINYL APPLICATION

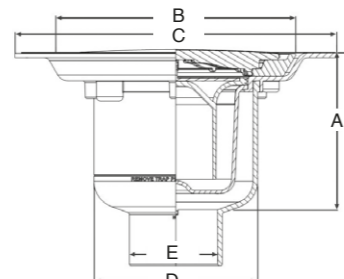
HORIZONTAL SHOWER GULLY

SG50SHV | SG75SHV



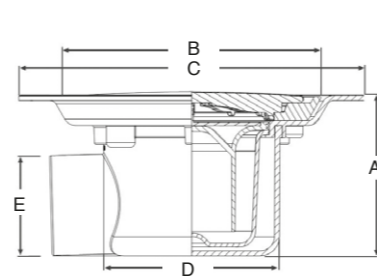
VERTICAL SHOWER GULLY

SG50SVV | SG75SVV



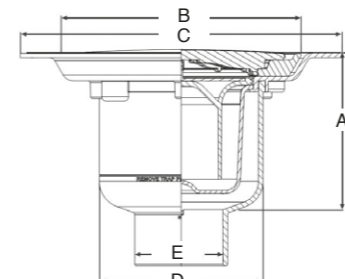
HORIZONTAL SHOWER GULLY – ABS

SG50WHV | SG75WHV



VERTICAL SHOWER GULLY – ABS

SG50WVV | SG75WVV



|                           | PRODUCT CODE               |                            |
|---------------------------|----------------------------|----------------------------|
|                           | SG50SHV                    | SG75SHV                    |
| COLOUR                    | Stainless Steel            | Stainless Steel            |
| WATER SEAL DEPTH (mm)     | 50                         | 75                         |
| FLOOR TYPE                | Vinyl                      | Vinyl                      |
| WEIGHT (KG)               | 0.90                       | 1.10                       |
| DIMENSIONS (mm) AxBxCxDxE | 100 x 161 x 216 x 110 x 55 | 125 x 101 x 216 x 110 x 55 |

|                           | PRODUCT CODE               |                            |
|---------------------------|----------------------------|----------------------------|
|                           | SG50SVV                    | SG75SVV                    |
| COLOUR                    | Stainless Steel            | Stainless Steel            |
| WATER SEAL DEPTH (mm)     | 50                         | 75                         |
| FLOOR TYPE                | Vinyl                      | Vinyl                      |
| WEIGHT (KG)               | 0.90                       | 1.10                       |
| DIMENSIONS (mm) AxBxCxDxE | 110 x 161 x 216 x 110 x 55 | 134 x 161 x 216 x 110 x 55 |

|                           | PRODUCT CODE               |                            |
|---------------------------|----------------------------|----------------------------|
|                           | SG50WHV                    | SG75WHV                    |
| COLOUR                    | White                      | White                      |
| WATER SEAL DEPTH (mm)     | 50                         | 75                         |
| FLOOR TYPE                | Vinyl                      | Vinyl                      |
| WEIGHT (KG)               | 0.90                       | 1.10                       |
| DIMENSIONS (mm) AxBxCxDxE | 100 x 161 x 216 x 110 x 55 | 125 x 161 x 216 x 110 x 55 |

|                           | PRODUCT CODE               |                            |
|---------------------------|----------------------------|----------------------------|
|                           | SG50WVV                    | SG75WVV                    |
| COLOUR                    | White                      | White                      |
| WATER SEAL DEPTH (mm)     | 50                         | 75                         |
| FLOOR TYPE                | Vinyl                      | Vinyl                      |
| WEIGHT (KG)               | 0.90                       | 1.10                       |
| DIMENSIONS (mm) AxBxCxDxE | 110 x 161 x 216 x 110 x 55 | 134 x 161 x 216 x 110 x 55 |

REASONS TO TRUST MULTIKWIK

Trapped shower gullies for vinyl or tiled flooring

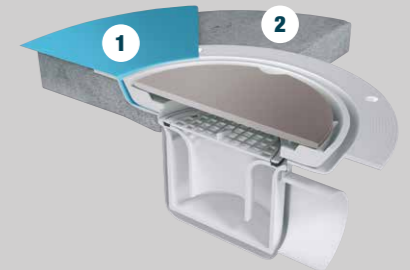
Whether the shower gully is required for vinyl or tiled flooring, Multikwik has a product available for either.

Vinyl

A ready assembled gully with a stainless steel or anti-slip ABS lid, seal depth of 50mm or 75mm and a choice between a horizontal or vertical outlet

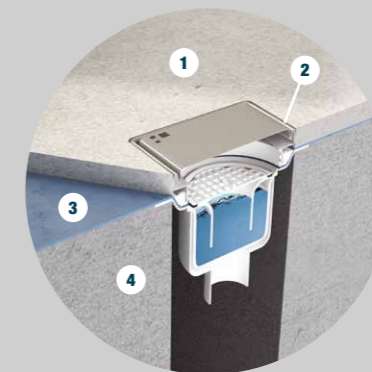
Trapped Shower Gully vinyl

- Sheet flooring 1
- Concrete floor 2



Tile

Horizontal or vertical and 50mm or 75mm water seal depths gully bodies can be combined with one of four grate options – both are sold separately for maximum design flexibility.



Trapped Shower gully tiled

- 1 Floor tiles
- 2 Waterproof tile adhesive
- 3 Waterproofing membrane
- 4 Concrete floor

TRUST MULTIKWIK

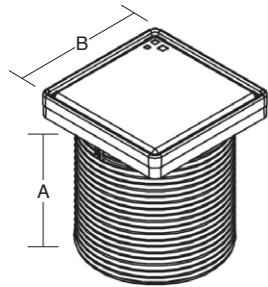
Trapped shower gullies for vinyl flooring are usually installed in commercial applications. For more security our vinyl shower gullies have a unique and secure locking ring system – preventing theft and vandalism.



FLOOR DRAINAGE / TRAPPED SHOWER GULLY – TILED APPLICATION

DUAL GRATE & RISER

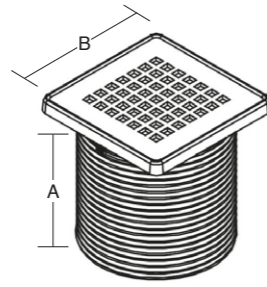
SG1T



- Riser can be cut between 36.5 – 130mm
- Requires shower gully body

SQUARE GRATE & RISER

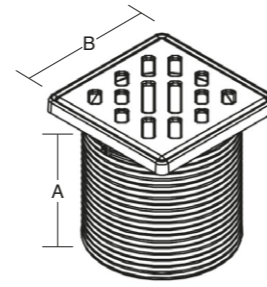
SG2T



- Riser can be cut between 36.5 – 130mm
- Requires shower gully body

CLASSIC GRATE & RISER

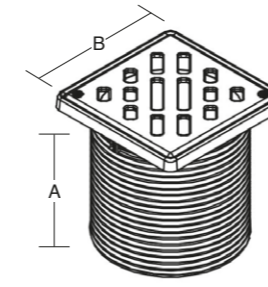
SG3T



- Riser can be cut between 36.5 – 130mm
- Requires shower gully body

CLASSIC VANDAL RESISTANT GRATE & RISER

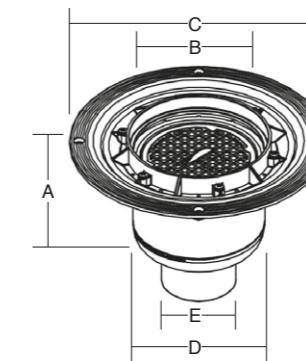
SG4T



- Riser can be cut between 36.5 – 130mm
- Requires shower gully body
- Screwed anti-vandal grate

VERTICAL SHOWER GULLY BODY

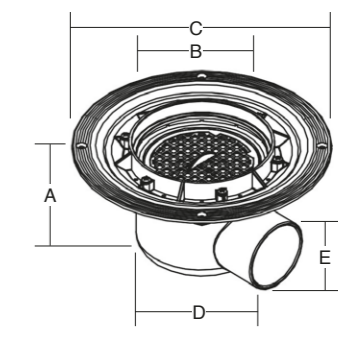
SG50VT | SG75VT



- Requires 'Grate & Riser' set

HORIZONTAL SHOWER GULLY BODY

SG50HT | SG75HT



- Requires 'Grate & Riser' set

| PRODUCT CODE          |                 |
|-----------------------|-----------------|
| SG1T                  |                 |
| COLOUR                | Stainless Steel |
| FLOOR TYPE            | Tiled           |
| WEIGHT (KG)           | 0.38            |
| DIMENSIONS (mm) A x B | 130 x 120       |

| PRODUCT CODE          |                 |
|-----------------------|-----------------|
| SG2T                  |                 |
| COLOUR                | Stainless Steel |
| FLOOR TYPE            | Tiled           |
| WEIGHT (KG)           | 0.41            |
| DIMENSIONS (mm) A x B | 121 x 121       |

| PRODUCT CODE          |                 |
|-----------------------|-----------------|
| SG3T                  |                 |
| COLOUR                | Stainless Steel |
| FLOOR TYPE            | Tiled           |
| WEIGHT (KG)           | 0.31            |
| DIMENSIONS (mm) A x B | 121 x 121       |

| PRODUCT CODE          |                 |
|-----------------------|-----------------|
| SG4T                  |                 |
| COLOUR                | Stainless Steel |
| FLOOR TYPE            | Tiled           |
| WEIGHT (KG)           | 0.31            |
| DIMENSIONS (mm) A x B | 121 x 121       |

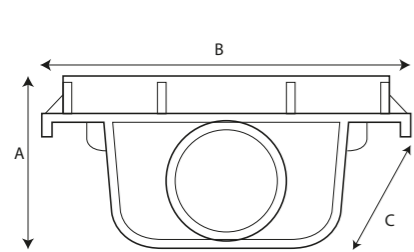
|                           | PRODUCT CODE               |                            |
|---------------------------|----------------------------|----------------------------|
|                           | SG50VT                     | SG75VT                     |
| COLOUR                    | White                      | White                      |
| WATER SEAL DEPTH (mm)     | 50                         | 75                         |
| FLOOR TYPE                | Tiled                      | Tiled                      |
| WEIGHT (KG)               | 0.52                       | 0.72                       |
| DIMENSIONS (mm) AxBxCxDxE | 110 x 120 x 216 x 110 x 55 | 134 x 120 x 216 x 110 x 55 |

|                           | PRODUCT CODE               |                            |
|---------------------------|----------------------------|----------------------------|
|                           | SG50HT                     | SG75HT                     |
| COLOUR                    | White                      | White                      |
| WATER SEAL DEPTH (mm)     | 50                         | 75                         |
| FLOOR TYPE                | Tiled                      | Tiled                      |
| WEIGHT (KG)               | 0.47                       | 0.67                       |
| DIMENSIONS (mm) AxBxCxDxE | 100 x 120 x 216 x 110 x 55 | 125 x 120 x 216 x 110 x 55 |

FLOOR DRAINAGE / CONTINUOUS CHANNEL

END CAP Ø40MM  
HORIZONTAL OUTLET

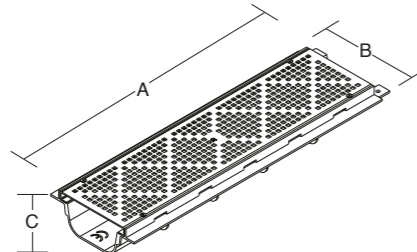
L29036



|                           | PRODUCT CODE  |
|---------------------------|---------------|
|                           | <b>L29036</b> |
| SIZE (mm)                 | 40            |
| COLOUR                    | Grey          |
| FLOOR TYPE                | Tiled         |
| DIMENSIONS (mm) A x B x C | 45 x 130 x 64 |

CONTINUOUS CHANNEL

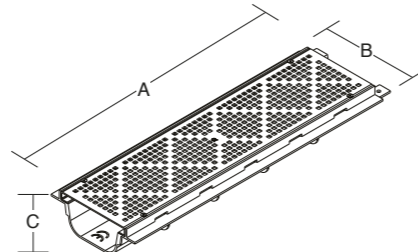
L29142



|                           | PRODUCT CODE    |
|---------------------------|-----------------|
|                           | <b>L29142</b>   |
| SIZE (mm)                 | 40              |
| COLOUR                    | Stainless Steel |
| FLOOR TYPE                | Tiled           |
| WEIGHT (KG)               | 1.61            |
| DIMENSIONS (mm) A x B x C | 500 x 130 x 64  |

CONTINUOUS CHANNEL – WITH OUTLET

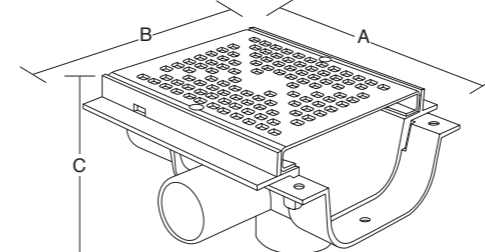
L29143



|                           | PRODUCT CODE    |
|---------------------------|-----------------|
|                           | <b>L29143</b>   |
| SIZE (mm)                 | 50              |
| COLOUR                    | Stainless Steel |
| FLOOR TYPE                | Tiled           |
| WEIGHT (KG)               | 1.73            |
| DIMENSIONS (mm) A x B x C | 500 x 130 x 64  |

CONTINUOUS CHANNEL – WITH MULTI OUTLET

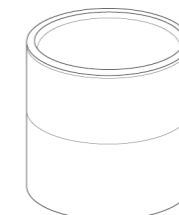
L29158



|                           | PRODUCT CODE    |
|---------------------------|-----------------|
|                           | <b>L29158</b>   |
| SIZE (mm)                 | 40/50           |
| COLOUR                    | Stainless Steel |
| FLOOR TYPE                | Tiled           |
| WEIGHT (KG)               | 0.57            |
| DIMENSIONS (mm) A x B x C | 150 x 130 x 64  |

OUTLET ADAPTOR LINNUM

TRL487 | TRL490

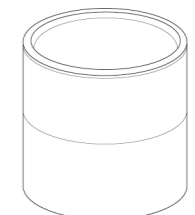


■ To BS EN 1566/5255 solvent waste

|           | PRODUCT CODE    |             |
|-----------|-----------------|-------------|
|           | TRL487          | TRL490      |
| SIZE (mm) | Ø40 Compression | Ø50 Solvent |
| COLOUR    | Grey            | Grey        |

OUTLET ADAPTOR CONT CHANNEL

TRL488 | TRL489



■ To BSEN 1566/5255 solvent waste

|           | PRODUCT CODE |             |
|-----------|--------------|-------------|
|           | TRL488       | TRL489      |
| SIZE (mm) | Ø50 Solvent  | Ø40 Solvent |
| COLOUR    | Grey         | Grey        |

---

### PRICING

For pricing details please refer to the Multikwik Price List.

---

### CE Marking

For the latest copies of the declaration of performance certificates please go to our website: [multikwik.com](http://multikwik.com)

---

### Product photography

Photographs are for representation only and may vary to the actual product. Colours are a guide only.

---

### Quality

Quality is one of our core principles:

- Products are made with care under an ISO9001 & ISO14001 certified system.
  - Multikwik hold many 3rd party approvals. Where appropriate, there are detailed in the product listing.
  - As part of our on going quality improvement processes we reserve the right to alter our products and ranges without notice.
-

The **Multikwik** specification guide offers details about our wide range of sanitary products, traps WC connectors, floor drainage solutions and more.

In every product we manufacture we aim to meet the **Multikwik** benchmark standards of:

- **Reliability**
- **Simplicity**
- **Speed of installation**
- **Problem solving features**

Some very simple reasons why you can **TRUST MULTIKWIK**



Sales hotline  
01622 852 654

Support hotline  
01622 852 798

Email  
info@multikwik.com

Twitter  
@multikwik



**TRUST MULTIKWIK**

[WWW.MULTIKWIK.COM](http://WWW.MULTIKWIK.COM)