



Durapipe

superFLO

chilled and cold water pipework

Durapipe superFLO

chilled and cold water pipework

Durapipe superFLO offers tremendous advantages for chilled water/air conditioning and cold water services in buildings:

When considering environmental control systems or more specifically the pipework requirements for air conditioning, chilled or boosted cold water applications, Durapipe superFLO provides the perfect solution.

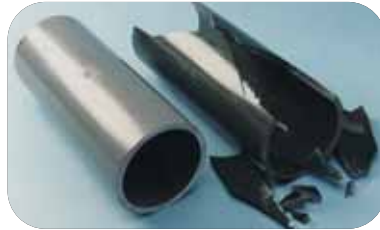
Durapipe superFLO is lightweight and remains extremely tough and durable even at temperatures as low as -40°C.

The complete system which incorporates pipes, fittings and valves offers a 50-year design life as well as numerous benefits that alternative pipework materials cannot provide. These include reduced installation costs via a fast solvent-weld jointing procedure, low maintenance costs due to its limescale and corrosion resistance properties as well as being extremely lightweight making the product much easier to handle on-site.

Durapipe superFLO is available in sizes ranging from 16mm – 315mm.

- Fully integrated range of pipes, fittings and valves (manual and actuated)
- 50 year design life
- Reduced installation costs
- Non corrodible
- Low maintenance
- Robust and reliable
- Lightweight
- Tough and durable
- Ductile down to minus 40°C
- Exceptionally smooth bore
- Limescale resistant
- Reduced noise compared to metal
- Fast and reliable jointing
- Low thermal conductivity





superFLO

PVC-U

Impact resistant

Durapipe **superFLO** is a ductile material, and remains ductile down to minus 40°C. Impact damage is usually confined to scuffs or dents. In severe cases there may be ductile tearing of the material.

In contrast, PVC-U and PVC-C are much less ductile, particularly at temperatures below +5°C. A sufficiently hard impact can cause them to fragment.

Wide temperature range

A major advantage of Durapipe **superFLO** over other plastic systems is its ability to perform over a wide temperature range from -40°C to +70°C.

(Note: usual precautions must be taken to prevent contents freezing.)

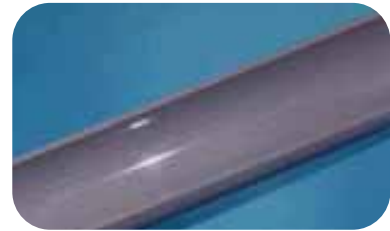


Lightweight

At one-sixth the weight of steel pipes, Durapipe **superFLO** is much easier to handle, especially during installation on site.

Reduced installation costs

The ease of handling and speed of jointing of Durapipe **superFLO** will generally result in the total installed cost being lower than for threaded, welded, or soldered metal systems.



Smooth bore, uninhibited flow

Superior flow

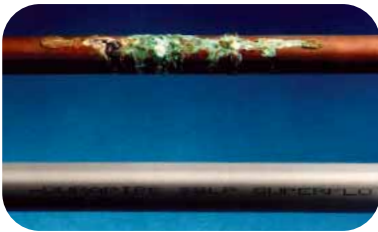
Low fluid friction allows higher flow velocities than metal pipes, and also inhibits the formation of scale, with consequent savings in pump energy consumption, and reduced pressure drops.



Durapipe **superFLO** resists the limescale build-up common in most metal pipe materials as shown in the picture above.

Tough and durable

The Butadiene constituent of **superFLO** affords exceptional resistance to accidental damage, a benefit which it retains, even at sub-zero temperatures.



Durapipe **superFLO**, unlike copper or steel, is free from corrosion.

Corrosion resistance

No material deterioration means no costly pipe and fittings system repair or replacement.



Metal threaded fittings

superFLO ABS/brass ended fittings provide reliable connections between pipework and ancillary equipment across a range of building services applications.

pe
superFLO



Fast, simple, high integrity jointing

Solvent welding is a simple process which produces a permanent joint of strength equal to, or exceeding, the pipe itself. No special tools or equipment, or hot works permits, are required.



Flexible braided hoses.

superFLO ABS flexible hoses are designed to allow direct connection from **superFLO** ABS pipework to operating equipment.

Aligning pipes and fittings

Pipe markings and 90° markings on fittings help to align pipes and fittings to achieve perfect 90° or 180° location of fittings.

Design life

Durapipe **superFLO** has a 50 year design life with a residual safety factor of 2:1



Visual white bead indicator.

White solvent cement

A bead of white solvent cement around the end of the fittings provides a visual indication that the joint has been made.

Durapipe **superFLO**

chilled and cold water pipework

What our customers say



Harbourside, Bristol

“Durapipe **superFLO** was an ideal choice because of its durable properties, in addition, its ease of installation and reliability also influenced the decision to use the product.”

Dave Charles, Crown House Technologies



Beetham Tower, Manchester

“Durapipe **superFLO** met all our needs and particularly offered ease of installation, allowing for cost savings on labour time.”

Rotary Northern Contractors



Sheffield City Hall

“The lightweight construction of Durapipe **superFLO** meant it was an easy system for us to manage on site. As it requires no hot work permits or heavy cutting equipment, **superFLO** is quicker and easier to install than comparable pipework systems”

NG Bailey Contractors



Lister Mills, Bradford

“Durapipe **superFLO** is lighter than traditional materials, making it easier to handle on site and safer to use because it doesn't require hot works. Durapipe **superFLO** offered the project a proven, high quality system and we would definitely use it again.”

Mark Radcliffe, RAD Mechanical Services Ltd



Mountford Park, Auckland, New Zealand

“Durapipe **superFLO** was selected due to its high performance properties and quick and easy installation technique.”

James Logan Asmuss Plastic Systems Ltd.



Walsgrave Hospital, Coventry

“Durapipe **superFLO** offers exceptional impact strength, making it more resistant to damage and is resistant to limescale build-up which can reduce the maintenance and replacement requirements of the pipework system.”

Skanska Construction.



Durapipe
superFLO

For further information on all products and services contact our Customer Services Team.

Durapipe UK
Walsall Road
Norton Canes
Cannock
Staffordshire
WS11 9NS
United Kingdom
Tel: +44 (0)1543 279909
Fax: +44 (0)1543 279450
email: enquiries@durapipe.co.uk
www.durapipe.co.uk

Distributor

04900014 February 2007